

DATASHEET

Arylsulfatase B Rabbit Polyclonal Antibody

CAT. NO. APA09117

KEY FEATURES

Target	Arylsulfatase B	Source / Host	Rabbit
Reactivity	Human, Mouse, Rat	Clonality	Polyclonal
Applications	WB, IF/ICC	Conjugation	Unconjugated
Form / Buffer	Liquid in 0.42% Potassium phosphate, 0.87% Sodium chloride, pH 7.3, 30% glycerol, and 0.01% sodium azide.		Storage at-20°C

BACKGROUND

Removes sulfate groups from chondroitin-4-sulfate (C4S) and regulates its degradation and regulates its degradation . Involved in the regulation of cell adhesion, cell migration and invasion in colonic epithelium . In the central nervous system, is a regulator of neurite outgrowth and neuronal plasticity, acting through the control of sulfate glycosaminoglycans and neurocan levels .

APPLICATION

To ensure optimal assay performance, AREX recommends conducting reagent titration tailored to each testing system for optimal detection results.

WB	1:500 - 1:1000
IF/ICC	1:50 - 1:200

*Results are sample-specific. Please refer to your local assay conditions and test parameters for reference.

PRODUCT OVERVIEW

Description	Rabbit polyclonal antibody to Arylsulfatase B
Specificity	Recognizes endogenous levels of Arylsulfatase B protein.
Antibody Type	Primary antibody
Immunogen	KLH-conjugated synthetic peptide encompassing a sequence within the C-term region of human Arylsulfatase B. The exact sequence is proprietary.
Purification	The antibody was purified by immunogen affinity chromatography.
Molecular Weight	Predicted: 59 kD; Observed: 60 kD
Form/Buffer	Liquid in 0.42% Potassium phosphate, 0.87% Sodium chloride, pH 7.3, 30% glycerol, and 0.01% sodium azide.
Alternative Names	Arylsulfatase B; ASB; N-acetylgalactosamine-4-sulfatase; G4S
Gene Symbol	ARSB
Entrez Gene	411(Human); 11881(Mouse); 25227(Rat)
SwissProt	P15848(Human); P50429(Mouse); P50430(Rat)

*AREX continuously optimizes our products. Webpage content may not reflect the latest updates. For inquiries, please contact info@arexbio.com or your local distributor.

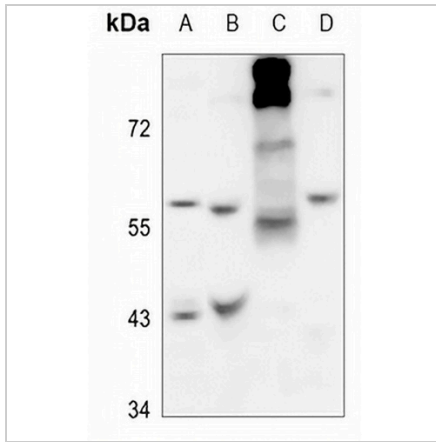
*Clone Number, Reactivity, Source/Host and Clonality can be found in the product name and Key Features section above.

DATASHEET

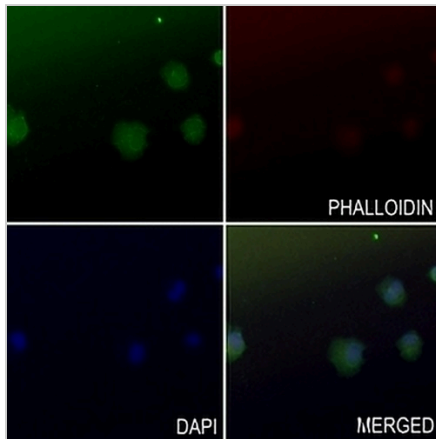
Arylsulfatase B Rabbit Polyclonal Antibody

CAT. NO. APA09117

DATA



Western blot analysis of Arylsulfatase B expression in HeLa (A), mouse liver (B), mouse muscle (C), rat liver (D) whole cell lysates. (Predicted band size: 59 kD; Observed band size: 60 kD)



Immunofluorescent analysis of Arylsulfatase B staining in SGC7901 cells. Formalin-fixed cells were permeabilized with 0.1% Triton X-100 in TBS for 5-10 minutes and blocked with 3% BSA-PBS for 30 minutes at room temperature. Cells were probed with the primary antibody in 3% BSA-PBS and incubated overnight at 4 °C in a humidified chamber. Cells were washed with PBST and incubated with a AREX® Fluor 488 -conjugated secondary antibody (green) in PBS at room temperature in the dark. Phalloidin - AREX® Fluor 594 was used to stain Actin filaments (red). DAPI was used to stain the cell nuclei (blue).

STORAGE

Store at 4°C short term. For long term storage, store at -20°C, avoiding freeze/thaw cycles.

NOTE

For Research Use Only. Not for diagnostic, therapeutics, prophylactic or in vivo use.