

DATASHEET

ATP6V1G3 Rabbit Polyclonal Antibody

CAT. NO. APA09125

KEY FEATURES

| | | | |
|---------------|---|---------------|--------------------|
| Target | ATP6V1G3 | Source / Host | Rabbit |
| Reactivity | Human, Mouse, Rat | Clonality | Polyclonal |
| Applications | WB | Conjugation | Unconjugated |
| Form / Buffer | Liquid in 0.42% Potassium phosphate, 0.87% Sodium chloride, pH 7.3, 30% glycerol, and 0.01% sodium azide. | | Storage at-20°C |

BACKGROUND

Subunit of the V1 complex of vacuolar(H⁺)-ATPase (V-ATPase), a multisubunit enzyme composed of a peripheral complex (V1) that hydrolyzes ATP and a membrane integral complex (V0) that translocates protons. V-ATPase is responsible for acidifying and maintaining the pH of intracellular compartments and in some cell types, is targeted to the plasma membrane, where it is responsible for acidifying the extracellular environment.

APPLICATION

To ensure optimal assay performance, AREX recommends conducting reagent titration tailored to each testing system for optimal detection results.

| | |
|----|----------------|
| WB | 1:500 - 1:1000 |
|----|----------------|

*Results are sample-specific. Please refer to your local assay conditions and test parameters for reference.

PRODUCT OVERVIEW

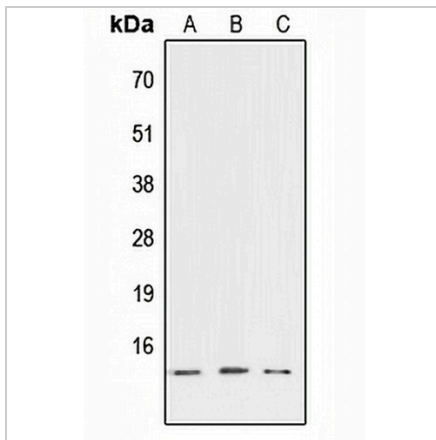
| | |
|-------------------|---|
| Description | Rabbit polyclonal antibody to ATP6V1G3 |
| Specificity | Recognizes endogenous levels of ATP6V1G3 protein. |
| Antibody Type | Primary antibody |
| Immunogen | KLH-conjugated synthetic peptide encompassing a sequence within the center region of human ATP6V1G3. The exact sequence is proprietary. |
| Purification | The antibody was purified by immunogen affinity chromatography. |
| Molecular Weight | Predicted: 13 kD; Observed: 13 kD |
| Form/Buffer | Liquid in 0.42% Potassium phosphate, 0.87% Sodium chloride, pH 7.3, 30% glycerol, and 0.01% sodium azide. |
| Alternative Names | ATP6G3; V-type proton ATPase subunit G 3; V-ATPase subunit G 3; V-ATPase 13 kDa subunit 3; Vacuolar proton pump subunit G 3 |
| Gene Symbol | ATP6V1G3 |
| Entrez Gene | 127124(Human); 338375(Mouse) |
| SwissProt | Q96LB4(Human); Q8BMC1(Mouse) |

*AREX continuously optimizes our products. Webpage content may not reflect the latest updates. For inquiries, please contact info@arex.bio or your local distributor.

*Clone Number, Reactivity, Source/Host and Clonality can be found in the product name and Key Features section above.

DATASHEET**ATP6V1G3 Rabbit Polyclonal Antibody**

CAT. NO. APA09125

DATA

Western blot analysis of ATP6V1G3 expression in HEK293T (A), NIH3T3 (B), PC12 (C) whole cell lysates. (Predicted band size: 13 kD; Observed band size: 13 kD)

STORAGE

Store at 4°C short term. For long term storage, store at -20°C, avoiding freeze/thaw cycles.

NOTE

For Research Use Only. Not for diagnostic, therapeutics, prophylactic or in vivo use.