

**DATASHEET**

**CDC25A Rabbit Polyclonal Antibody**

CAT. NO. APA09164

**KEY FEATURES**

Target	CDC25A	Source / Host	Rabbit
Reactivity	Human, Mouse, Rat, Bovine	Clonality	Polyclonal
Applications	WB	Conjugation	Unconjugated
Form / Buffer	Liquid in 0.42% Potassium phosphate, 0.87% Sodium chloride, pH 7.3, 30% glycerol, and 0.01% sodium azide.		Storage at -20°C

**BACKGROUND**

Tyrosine protein phosphatase which functions as a dosage-dependent inducer of mitotic progression . Directly dephosphorylates CDK1 and stimulates its kinase activity . Also dephosphorylates CDK2 in complex with cyclin-E, in vitro .

**APPLICATION**

To ensure optimal assay performance, AREX recommends conducting reagent titration tailored to each testing system for optimal detection results.

WB	1:500 - 1:1000
----	----------------

\*Results are sample-specific. Please refer to your local assay conditions and test parameters for reference.

**PRODUCT OVERVIEW**

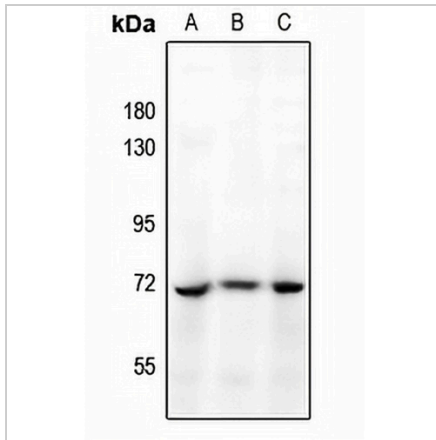
Description	Rabbit polyclonal antibody to CDC25A
Specificity	Recognizes endogenous levels of CDC25A protein.
Antibody Type	Primary antibody
Immunogen	KLH-conjugated synthetic peptide encompassing a sequence within the center region of human CDC25A. The exact sequence is proprietary.
Purification	The antibody was purified by immunogen affinity chromatography.
Molecular Weight	Predicted: 59 kD; Observed: 70 kD
Form/Buffer	Liquid in 0.42% Potassium phosphate, 0.87% Sodium chloride, pH 7.3, 30% glycerol, and 0.01% sodium azide.
Alternative Names	M-phase inducer phosphatase 1; Dual specificity phosphatase Cdc25A
Gene Symbol	CDC25A
Entrez Gene	993(Human); 12530(Mouse); 171102(Rat)
SwissProt	P30304(Human); P48964(Mouse); P48965(Rat)

\*AREX continuously optimizes our products. Webpage content may not reflect the latest updates. For inquiries, please contact [info@arexbio.com](mailto:info@arexbio.com) or your local distributor.

\*Clone Number, Reactivity, Source/Host and Clonality can be found in the product name and Key Features section above.

**DATASHEET****CDC25A Rabbit Polyclonal Antibody**

CAT. NO. APA09164

**DATA**

Western blot analysis of CDC25A expression in HEK293T (A), PC3 (B), K562 (C) whole cell lysates. (Predicted band size: 59 kD; Observed band size: 70 kD)

**STORAGE**

Store at 4°C short term. For long term storage, store at -20°C, avoiding freeze/thaw cycles.

**NOTE**

For Research Use Only. Not for diagnostic, therapeutics, prophylactic or in vivo use.