

**DATASHEET**

**CHK2 (Phospho-S516) Rabbit Polyclonal Antibody**

CAT. NO. APA09178

**KEY FEATURES**

Target	CHK2 (Phospho-S516)	Source / Host	Rabbit
Reactivity	Human	Clonality	Polyclonal
Applications	WB	Conjugation	Unconjugated
Form / Buffer	Liquid in 0.42% Potassium phosphate, 0.87% Sodium chloride, pH 7.3, 30% glycerol, and 0.01% sodium azide.		Storage at -20°C

**BACKGROUND**

Serine/threonine-protein kinase which is required for checkpoint-mediated cell cycle arrest, activation of DNA repair and apoptosis in response to the presence of DNA double-strand breaks. May also negatively regulate cell cycle progression during unperturbed cell cycles. Following activation, phosphorylates numerous effectors preferentially at the consensus sequence [L-X-R-X-X-S/T]. Regulates cell cycle checkpoint arrest through phosphorylation of CDC25A, CDC25B and CDC25C, inhibiting their activity. Inhibition of CDC25 phosphatase activity leads to increased inhibitory tyrosine phosphorylation of CDK-cyclin complexes and blocks cell cycle progression. May also phosphorylate NEK6 which is involved in G2/M cell cycle arrest.

**APPLICATION**

To ensure optimal assay performance, AREX recommends conducting reagent titration tailored to each testing system for optimal detection results.

WB	1:500 - 1:1000
----	----------------

\*Results are sample-specific. Please refer to your local assay conditions and test parameters for reference.

**PRODUCT OVERVIEW**

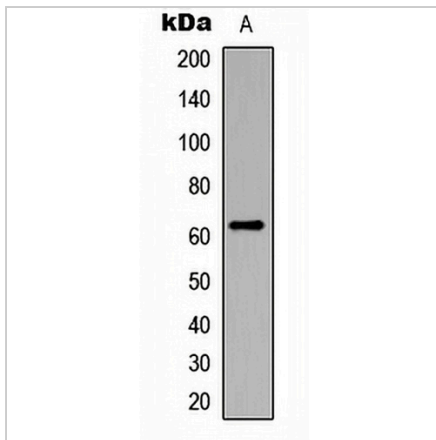
Description	Rabbit polyclonal antibody to CHK2 (Phospho-S516)
Specificity	Recognizes endogenous levels of CHK2 protein only when phosphorylated at S516.
Antibody Type	Primary antibody
Immunogen	KLH-conjugated synthetic phosphopeptide corresponding to residues surrounding S516 of human CHK2 protein. The exact sequence is proprietary.
Purification	The antibody was purified by immunogen affinity chromatography.
Molecular Weight	Predicted: 60 kD; Observed: 62 kD
Form/Buffer	Liquid in 0.42% Potassium phosphate, 0.87% Sodium chloride, pH 7.3, 30% glycerol, and 0.01% sodium azide.
Alternative Names	CDS1; CHK2; RAD53; Serine/threonine-protein kinase Chk2; CHK2 checkpoint homolog; Cds1 homolog; Hucds1; hCds1; Checkpoint kinase 2
Gene Symbol	CHEK2
Entrez Gene	11200(Human)
SwissProt	O96017(Human)

\*AREX continuously optimizes our products. Webpage content may not reflect the latest updates. For inquiries, please contact [info@arexbio.com](mailto:info@arexbio.com) or your local distributor.

\*Clone Number, Reactivity, Source/Host and Clonality can be found in the product name and Key Features section above.

**DATASHEET****CHK2 (Phospho-S516) Rabbit Polyclonal Antibody**

CAT. NO. APA09178

**DATA**

Western blot analysis of CHK2 (Phospho-S516) expression in HeLa (A) whole cell lysates.  
(Predicted band size: 60 kD; Observed band size: 62 kD)

**STORAGE**

Store at 4°C short term. For long term storage, store at -20°C, avoiding freeze/thaw cycles.

**NOTE**

For Research Use Only. Not for diagnostic, therapeutics, prophylactic or in vivo use.