

**DATASHEET**

**CHST6 Rabbit Polyclonal Antibody**

CAT. NO. APA09182

**KEY FEATURES**

Target	CHST6	Source / Host	Rabbit
Reactivity	Human, Mouse, Rat	Clonality	Polyclonal
Applications	WB, IF/ICC	Conjugation	Unconjugated
Form / Buffer	Liquid in 0.42% Potassium phosphate, 0.87% Sodium chloride, pH 7.3, 30% glycerol, and 0.01% sodium azide.		Storage at -20°C

**BACKGROUND**

Sulfotransferase that utilizes 3'-phospho-5'-adenylyl sulfate (PAPS) as sulfonate donor to catalyze the transfer of sulfate to position 6 of non-reducing N-acetylglucosamine (GlcNAc) residues of keratan as sulfonate donor to catalyze the transfer of sulfate to position 6 of non-reducing N-acetylglucosamine (GlcNAc) residues of keratan . Cooperates with B4GALT4 galactosyltransferase and B3GNT7 N-acetylglucosaminyltransferase to construct and elongate the sulfated disaccharide unit [->3Galbeta1->4(6-sulfoGlcNAcbeta)1->] within keratan sulfate polymer. Involved in biosynthesis of keratan sulfate in cornea, with an impact on proteoglycan fibril organization and corneal transparency . Involved in sulfation of endothelial mucins such as GLYCAM1 .

**APPLICATION**

To ensure optimal assay performance, AREX recommends conducting reagent titration tailored to each testing system for optimal detection results.

WB	1:500 - 1:1000
IF/ICC	1:100 - 1:500

\*Results are sample-specific. Please refer to your local assay conditions and test parameters for reference.

**PRODUCT OVERVIEW**

Description	Rabbit polyclonal antibody to CHST6
Specificity	Recognizes endogenous levels of CHST6 protein.
Antibody Type	Primary antibody
Immunogen	KLH-conjugated synthetic peptide encompassing a sequence within the C-term region of human CHST6. The exact sequence is proprietary.
Purification	The antibody was purified by immunogen affinity chromatography.
Molecular Weight	Predicted: 44 kD; Observed: 50 kD
Form/Buffer	Liquid in 0.42% Potassium phosphate, 0.87% Sodium chloride, pH 7.3, 30% glycerol, and 0.01% sodium azide.
Alternative Names	Carbohydrate sulfotransferase 6; Corneal N-acetylglucosamine-6-O-sulfotransferase; C-GlcNAc6ST; hCGn6ST; Galactose/N-acetylglucosamine/N-acetylglucosamine 6-O-sulfotransferase 4-beta; GST4-beta; N-acetylglucosamine 6-O-sulfotransferase 5; GlcNAc6ST-5; Gn6st-5
Gene Symbol	CHST6
Entrez Gene	4166(Human)
SwissProt	Q9GZX3(Human)

\*AREX continuously optimizes our products. Webpage content may not reflect the latest updates. For inquiries, please contact [info@arexbio.com](mailto:info@arexbio.com) or your local distributor.

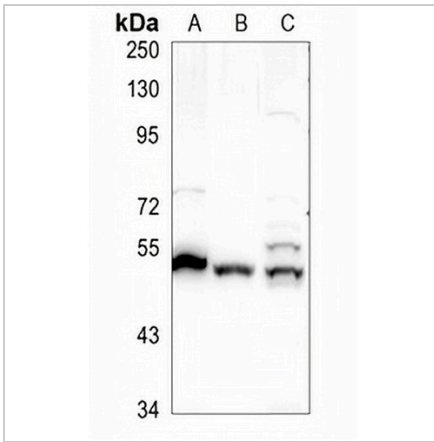
\*Clone Number, Reactivity, Source/Host and Clonality can be found in the product name and Key Features section above.

**DATASHEET**

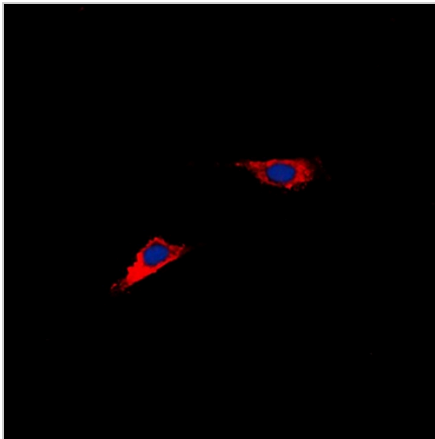
**CHST6 Rabbit Polyclonal Antibody**

CAT. NO. APA09182

**DATA**



Western blot analysis of CHST6 expression in U87MG (A), rat spinal cord (B), C6 (C) whole cell lysates. (Predicted band size: 44 kD; Observed band size: 50 kD)



Immunofluorescent analysis of CHST6 staining in Jurkat cells. Formalin-fixed cells were permeabilized with 0.1% Triton X-100 in TBS for 5-10 minutes and blocked with 3% BSA-PBS for 30 minutes at room temperature. Cells were probed with the primary antibody in 3% BSA-PBS and incubated overnight at 4 °C in a humidified chamber. Cells were washed with PBST and incubated with a DyLight 594-conjugated secondary antibody (red) in PBS at room temperature in the dark. DAPI was used to stain the cell nuclei (blue).

**STORAGE**

Store at 4°C short term. For long term storage, store at -20°C, avoiding freeze/thaw cycles.

**NOTE**

For Research Use Only. Not for diagnostic, therapeutics, prophylactic or in vivo use.