

**DATASHEET**

**COX7A2/3 Rabbit Polyclonal Antibody**

CAT. NO. APA09194

**KEY FEATURES**

Target	COX7A2/3	Source / Host	Rabbit
Reactivity	Human, Mouse, Rat, Bovine, Dog, Monkey, Sheep	Clonality	Polyclonal
Applications	WB, IHC, IF/ICC	Conjugation	Unconjugated
Form / Buffer	Liquid in 0.42% Potassium phosphate, 0.87% Sodium chloride, pH 7.3, 30% glycerol, and 0.01% sodium azide.		Storage at -20°C

**BACKGROUND**

Putative cytochrome c oxidase subunit 7A3, mitochondrial (COX7A2P2), also known as Cytochrome c oxidase subunit VIIa 3. Belongs to the cytochrome c oxidase VIIa family Subcellular location: Mitochondrion inner membrane

**APPLICATION**

To ensure optimal assay performance, AREX recommends conducting reagent titration tailored to each testing system for optimal detection results.

WB	1:500 - 1:1000
IHC	1:100 - 1:200
IF/ICC	1:50 - 1:200

\*Results are sample-specific. Please refer to your local assay conditions and test parameters for reference.

**PRODUCT OVERVIEW**

Description	Rabbit polyclonal antibody to COX7A2/3
Specificity	Recognizes endogenous levels of COX7A2/3 protein.
Antibody Type	Primary antibody
Immunogen	KLH-conjugated synthetic peptide encompassing a sequence within the N-term region of human COX7A2/3. The exact sequence is proprietary.
Purification	The antibody was purified by immunogen affinity chromatography.
Molecular Weight	Predicted: 11; Observed: 15 kD
Form/Buffer	Liquid in 0.42% Potassium phosphate, 0.87% Sodium chloride, pH 7.3, 30% glycerol, and 0.01% sodium azide.
Alternative Names	COX7A2P2; COX7A3; COX7AL2; COX7AP2; Putative cytochrome c oxidase subunit 7A3 mitochondrial; Cytochrome c oxidase subunit VIIa 3; COX7A2; COX7AL; Cytochrome c oxidase subunit 7A2 mitochondrial; Cytochrome c oxidase subunit VIIa-liver/heart; Cytochrome c oxidase subunit VIIa-L; Cytochrome c oxidase subunit VIIaL
Gene Symbol	COX7A2; COX7A2P2
Entrez Gene	1347(Human); 12866(Mouse); 29507(Rat)
SwissProt	O60397; P14406(Human); P48771(Mouse); P35171(Rat)

\*AREX continuously optimizes our products. Webpage content may not reflect the latest updates. For inquiries, please contact [info@arexbio.com](mailto:info@arexbio.com) or your local distributor.

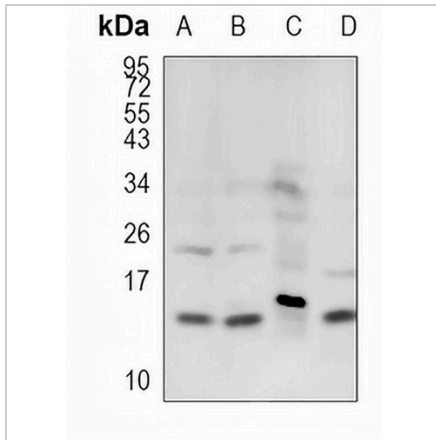
\*Clone Number, Reactivity, Source/Host and Clonality can be found in the product name and Key Features section above.

**DATASHEET**

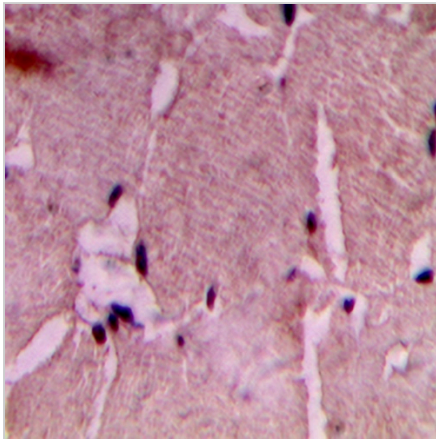
**COX7A2/3 Rabbit Polyclonal Antibody**

CAT. NO. APA09194

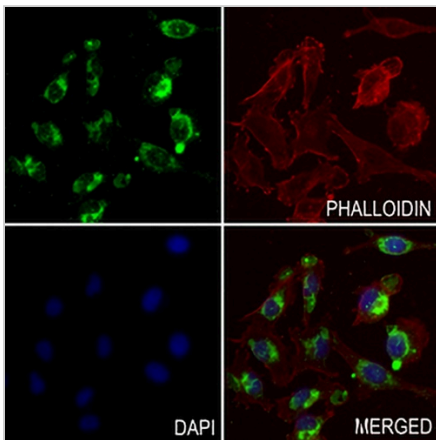
**DATA**



Western blot analysis of COX7A2/3 expression in HEK293T (A), H446 (B), CT26 (C), rat testis (D) whole cell lysates. (Predicted band size: 11; 9 kD; Observed band size: 15 kD)



Immunohistochemical analysis of COX7A2/3 staining in human heart formalin fixed paraffin embedded tissue section. The section was pre-treated using heat mediated antigen retrieval with sodium citrate buffer (pH 6.0). The section was then incubated with the antibody at room temperature and detected using an HRP conjugated compact polymer system. DAB was used as the chromogen. The section was then counterstained with haematoxylin and mounted with DPX.



Immunofluorescent analysis of COX7A2/3 staining in MDAMB231 cells. Formalin-fixed cells were permeabilized with 0.1% Triton X-100 in TBS for 5-10 minutes and blocked with 3% BSA-PBS for 30 minutes at room temperature. Cells were probed with the primary antibody in 3% BSA-PBS and incubated overnight at 4 °C in a humidified chamber. Cells were washed with PBST and incubated with a AREX® Fluor 488 -conjugated secondary antibody (green) in PBS at room temperature in the dark. Phalloidin - AREX® Fluor 594 was used to stain Actin filaments (red). DAPI was used to stain the cell nuclei (blue).

**STORAGE**

Store at 4°C short term. For long term storage, store at -20°C, avoiding freeze/thaw cycles.

**NOTE**

For Research Use Only. Not for diagnostic, therapeutics, prophylactic or in vivo use.