

## DATASHEET

# ICER Rabbit Polyclonal Antibody

CAT. NO. APA09199

### KEY FEATURES

Target	ICER	Source / Host	Rabbit
Reactivity	Human, Mouse, Rat, Bovine, Dog, Pig	Clonality	Polyclonal
Applications	WB, IHC	Conjugation	Unconjugated
Form / Buffer	Liquid in 0.42% Potassium phosphate, 0.87% Sodium chloride, pH 7.3, 30% glycerol, and 0.01% sodium azide.		Storage at-20°C

### BACKGROUND

Transcriptional regulator that binds the cAMP response element (CRE), a sequence present in many viral and cellular promoters. Isoforms are either transcriptional activators or repressors. Plays a role in spermatogenesis and is involved in spermatid maturation , a sequence present in many viral and cellular promoters. Isoforms are either transcriptional activators or repressors. Plays a role in spermatogenesis and is involved in spermatid maturation .

### APPLICATION

To ensure optimal assay performance, AREX recommends conducting reagent titration tailored to each testing system for optimal detection results.

WB	1:500 - 1:1000
IHC	1:100 - 1:200

\*Results are sample-specific. Please refer to your local assay conditions and test parameters for reference.

### PRODUCT OVERVIEW

Description	Rabbit polyclonal antibody to ICER
Specificity	Recognizes endogenous levels of ICER protein.
Antibody Type	Primary antibody
Immunogen	KLH-conjugated synthetic peptide encompassing a sequence within the center region of human ICER. The exact sequence is proprietary.
Purification	The antibody was purified by immunogen affinity chromatography.
Molecular Weight	Predicted: 37 kD; Observed: 35 kD
Form/Buffer	Liquid in 0.42% Potassium phosphate, 0.87% Sodium chloride, pH 7.3, 30% glycerol, and 0.01% sodium azide.
Alternative Names	cAMP-responsive element modulator; Inducible cAMP early repressor; ICER
Gene Symbol	CREM
Entrez Gene	1390(Human); 12916(Mouse); 25620(Rat)
SwissProt	Q03060(Human); P27699(Mouse); Q03061(Rat)

\*AREX continuously optimizes our products. Webpage content may not reflect the latest updates. For inquiries, please contact [info@arexbio.com](mailto:info@arexbio.com) or your local distributor.

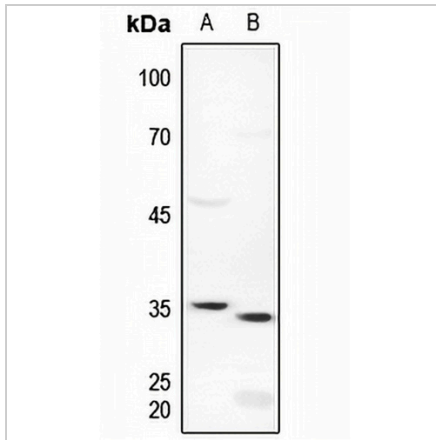
\*Clone Number, Reactivity, Source/Host and Clonality can be found in the product name and Key Features section above.

**DATASHEET**

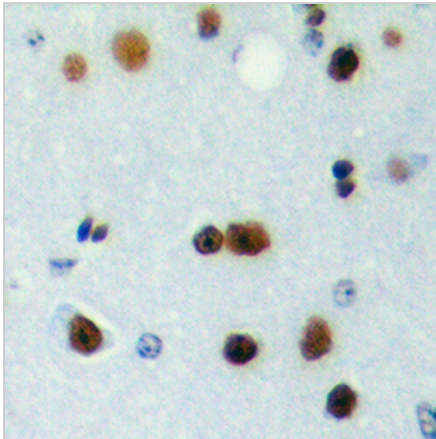
**ICER Rabbit Polyclonal Antibody**

CAT. NO. APA09199

**DATA**



Western blot analysis of ICER expression in mouse kidney (A), rat lung (B) whole cell lysates. (Predicted band size: 37 kD; Observed band size: 35 kD)



Immunohistochemical analysis of ICER staining in human brain formalin fixed paraffin embedded tissue section. The section was pre-treated using heat mediated antigen retrieval with sodium citrate buffer (pH 6.0). The section was then incubated with the antibody at room temperature and detected using an HRP conjugated compact polymer system. DAB was used as the chromogen. The section was then counterstained with haematoxylin and mounted with DPX.

**STORAGE**

Store at 4°C short term. For long term storage, store at -20°C, avoiding freeze/thaw cycles.

**NOTE**

For Research Use Only. Not for diagnostic, therapeutics, prophylactic or in vivo use.