

DATASHEET

Cytochrome P450 21A2 Rabbit Polyclonal Antibody

CAT. NO. APA09212

KEY FEATURES

Target	Cytochrome P450 21A2	Source / Host	Rabbit
Reactivity	Human	Clonality	Polyclonal
Applications	WB	Conjugation	Unconjugated
Form / Buffer	Liquid in 0.42% Potassium phosphate, 0.87% Sodium chloride, pH 7.3, 30% glycerol, and 0.01% sodium azide.		Storage at -20°C

BACKGROUND

A cytochrome P450 monooxygenase that plays a major role in adrenal steroidogenesis. Catalyzes the hydroxylation at C-21 of progesterone and 17alpha-hydroxyprogesterone to respectively form 11-deoxycorticosterone and 11-deoxycortisol, intermediate metabolites in the biosynthetic pathway of mineralocorticoids and glucocorticoids. Mechanistically, uses molecular oxygen inserting one oxygen atom into a substrate, and reducing the second into a water molecule, with two electrons provided by NADPH via cytochrome P450 reductase (CPR; NADPH-ferrihemoprotein reductase).

APPLICATION

To ensure optimal assay performance, AREX recommends conducting reagent titration tailored to each testing system for optimal detection results.

WB	1:500 - 1:1000
----	----------------

*Results are sample-specific. Please refer to your local assay conditions and test parameters for reference.

PRODUCT OVERVIEW

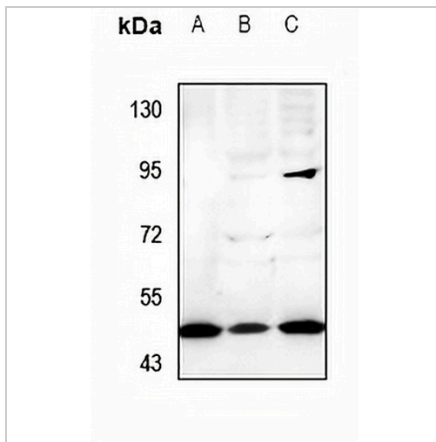
Description	Rabbit polyclonal antibody to Cytochrome P450 21A2
Specificity	Recognizes endogenous levels of Cytochrome P450 21A2 protein.
Antibody Type	Primary antibody
Immunogen	KLH-conjugated synthetic peptide encompassing a sequence within the center region of human Cytochrome P450 21A2. The exact sequence is proprietary.
Purification	The antibody was purified by immunogen affinity chromatography.
Molecular Weight	Predicted: 55 kD; Observed: 50 kD
Form/Buffer	Liquid in 0.42% Potassium phosphate, 0.87% Sodium chloride, pH 7.3, 30% glycerol, and 0.01% sodium azide.
Alternative Names	CYP21; CYP21B; Steroid 21-hydroxylase; 21-OHase; Cytochrome P-450c21; Cytochrome P450 21; Cytochrome P450 XXI; Cytochrome P450-C21; Cytochrome P450-C21B
Gene Symbol	CYP21A2
Entrez Gene	1589(Human)
SwissProt	P08686(Human)

*AREX continuously optimizes our products. Webpage content may not reflect the latest updates. For inquiries, please contact info@arexbio.com or your local distributor.

*Clone Number, Reactivity, Source/Host and Clonality can be found in the product name and Key Features section above.

DATASHEET**Cytochrome P450 21A2 Rabbit Polyclonal Antibody**

CAT. NO. APA09212

DATA

Western blot analysis of Cytochrome P450 21A2 expression in LO2 (A), HEK293T (B), HepG2 (C) whole cell lysates. (Predicted band size: 55 kD; Observed band size: 50 kD)

STORAGE

Store at 4°C short term. For long term storage, store at -20°C, avoiding freeze/thaw cycles.

NOTE

For Research Use Only. Not for diagnostic, therapeutics, prophylactic or in vivo use.