

DATASHEET

Cytochrome P450 26C1 Rabbit Polyclonal Antibody

CAT. NO. APA09213

KEY FEATURES

Target	Cytochrome P450 26C1	Source / Host	Rabbit
Reactivity	Human, Mouse, Rat	Clonality	Polyclonal
Applications	WB, IHC	Conjugation	Unconjugated
Form / Buffer	Liquid in 0.42% Potassium phosphate, 0.87% Sodium chloride, pH 7.3, 30% glycerol, and 0.01% sodium azide.		Storage at-20°C

BACKGROUND

A cytochrome P450 monooxygenase involved in the metabolism of retinoates (RAs), the active metabolites of vitamin A, and critical signaling molecules in animals, the active metabolites of vitamin A, and critical signaling molecules in animals. RAs exist as at least four different isomers: all-trans-RA (atRA), 9-cis-RA, 13-cis-RA, and 9,13-dicis-RA, where atRA is considered to be the biologically active isomer, although 9-cis-RA and 13-cis-RA also have activity (Probable). Catalyzes the oxidation of atRA primarily at C-4. Oxidation of atRA limits its biological activity and initiates a degradative process leading to its eventual elimination, thereby contributes to the regulation of atRA homeostasis and signaling (Probable).

APPLICATION

To ensure optimal assay performance, AREX recommends conducting reagent titration tailored to each testing system for optimal detection results.

WB	1:500 - 1:1000
IHC	1:100 - 1:200

*Results are sample-specific. Please refer to your local assay conditions and test parameters for reference.

PRODUCT OVERVIEW

Description	Rabbit polyclonal antibody to Cytochrome P450 26C1
Specificity	Recognizes endogenous levels of Cytochrome P450 26C1 protein.
Antibody Type	Primary antibody
Immunogen	KLH-conjugated synthetic peptide encompassing a sequence within the N-term region of human Cytochrome P450 26C1. The exact sequence is proprietary.
Purification	The antibody was purified by immunogen affinity chromatography.
Molecular Weight	Predicted: 57 kD; Observed: 57 kD
Form/Buffer	Liquid in 0.42% Potassium phosphate, 0.87% Sodium chloride, pH 7.3, 30% glycerol, and 0.01% sodium azide.
Alternative Names	Cytochrome P450 26C1
Gene Symbol	CYP26C1
Entrez Gene	340665(Human)
SwissProt	Q6V0L0(Human)

*AREX continuously optimizes our products. Webpage content may not reflect the latest updates. For inquiries, please contact info@arexbio.com or your local distributor.

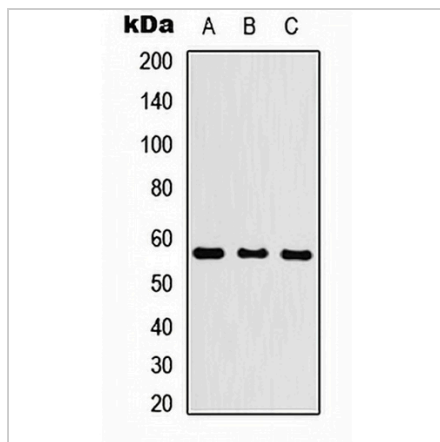
*Clone Number, Reactivity, Source/Host and Clonality can be found in the product name and Key Features section above.

DATASHEET

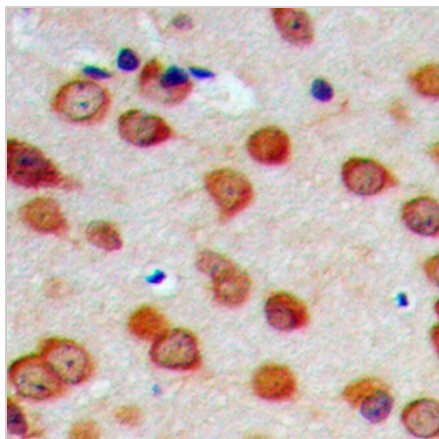
Cytochrome P450 26C1 Rabbit Polyclonal Antibody

CAT. NO. APA09213

DATA



Western blot analysis of Cytochrome P450 26C1 expression in HEK293T (A), Raw264.7 (B), H9C2 (C) whole cell lysates. (Predicted band size: 57 kD; Observed band size: 57 kD)



Immunohistochemical analysis of Cytochrome P450 26C1 staining in human brain formalin fixed paraffin embedded tissue section. The section was pre-treated using heat mediated antigen retrieval with sodium citrate buffer (pH 6.0). The section was then incubated with the antibody at room temperature and detected using an HRP conjugated compact polymer system. DAB was used as the chromogen. The section was then counterstained with haematoxylin and mounted with DPX.

STORAGE

Store at 4°C short term. For long term storage, store at -20°C, avoiding freeze/thaw cycles.

NOTE

For Research Use Only. Not for diagnostic, therapeutics, prophylactic or in vivo use.