

DATASHEET

DFF40 Rabbit Polyclonal Antibody

CAT. NO. APA09219

KEY FEATURES

Target	DFF40	Source / Host	Rabbit
Reactivity	Human, Mouse, Rat	Clonality	Polyclonal
Applications	WB	Conjugation	Unconjugated
Form / Buffer	Liquid in 0.42% Potassium phosphate, 0.87% Sodium chloride, pH 7.3, 30% glycerol, and 0.01% sodium azide.		Storage at -20°C

BACKGROUND

Nuclease that induces DNA fragmentation and chromatin condensation during apoptosis. Degrades naked DNA and induces apoptotic morphology.

APPLICATION

To ensure optimal assay performance, AREX recommends conducting reagent titration tailored to each testing system for optimal detection results.

WB	1:500 - 1:1000
----	----------------

*Results are sample-specific. Please refer to your local assay conditions and test parameters for reference.

PRODUCT OVERVIEW

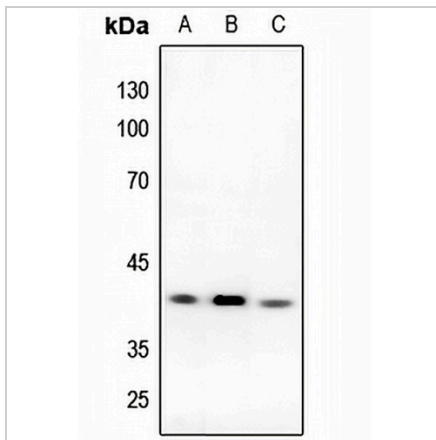
Description	Rabbit polyclonal antibody to DFF40
Specificity	Recognizes endogenous levels of DFF40 protein.
Antibody Type	Primary antibody
Immunogen	KLH-conjugated synthetic peptide encompassing a sequence within the N-term region of human DFF40. The exact sequence is proprietary.
Purification	The antibody was purified by immunogen affinity chromatography.
Molecular Weight	Predicted: 39 kD; Observed: 40 kD
Form/Buffer	Liquid in 0.42% Potassium phosphate, 0.87% Sodium chloride, pH 7.3, 30% glycerol, and 0.01% sodium azide.
Alternative Names	CAD; DFF2; DFF40; DNA fragmentation factor subunit beta; Caspase-activated deoxyribonuclease; CAD; Caspase-activated DNase; Caspase-activated nuclease; CPAN; DNA fragmentation factor 40 kDa subunit; DFF-40
Gene Symbol	DFFB
Entrez Gene	1677(Human); 13368(Mouse); 84359(Rat)
SwissProt	O76075(Human); O54788(Mouse); Q99N34(Rat)

*AREX continuously optimizes our products. Webpage content may not reflect the latest updates. For inquiries, please contact info@arexbio.com or your local distributor.

*Clone Number, Reactivity, Source/Host and Clonality can be found in the product name and Key Features section above.

DATASHEET**DFF40 Rabbit Polyclonal Antibody**

CAT. NO. APA09219

DATA

Western blot analysis of DFF40 expression in Hela (A), mouse kidney (B), rat kidney (C) whole cell lysates. (Predicted band size: 39 kD; Observed band size: 40 kD)

STORAGE

Store at 4°C short term. For long term storage, store at -20°C, avoiding freeze/thaw cycles.

NOTE

For Research Use Only. Not for diagnostic, therapeutics, prophylactic or in vivo use.