

DATASHEET
EIF1 Rabbit Polyclonal Antibody
CAT. NO. APA09232
KEY FEATURES

Target	EIF1	Source / Host	Rabbit
Reactivity	Human, Mouse, Rat, Bovine, Chicken, Monkey	Clonality	Polyclonal
Applications	WB, IF/ICC	Conjugation	Unconjugated
Form / Buffer	Liquid in 0.42% Potassium phosphate, 0.87% Sodium chloride, pH 7.3, 30% glycerol, and 0.01% sodium azide.		Storage at-20°C

BACKGROUND

Component of the 43S pre-initiation complex (43S PIC), which binds to the mRNA cap-proximal region, scans mRNA 5'-untranslated region, and locates the initiation codon . Together with eIF1A (EIF1AX), EIF1 facilitates scanning and is essential for start codon recognition on the basis of AUG nucleotide context and location relative to the 5'-cap . Participates to initiation codon selection by influencing the conformation of the 40S ribosomal subunit and the positions of bound mRNA and initiator tRNA; this is possible after its binding to the interface surface of the platform of the 40S ribosomal subunit close to the P-site .

APPLICATION

To ensure optimal assay performance, AREX recommends conducting reagent titration tailored to each testing system for optimal detection results.

WB	1:500 - 1:1000
IF/ICC	1:50 - 1:200

*Results are sample-specific. Please refer to your local assay conditions and test parameters for reference.

PRODUCT OVERVIEW

Description	Rabbit polyclonal antibody to EIF1
Specificity	Recognizes endogenous levels of EIF1 protein.
Antibody Type	Primary antibody
Immunogen	KLH-conjugated synthetic peptide encompassing a sequence within the C-term region of human EIF1. The exact sequence is proprietary.
Purification	The antibody was purified by immunogen affinity chromatography.
Molecular Weight	Predicted: 12 kD; Observed: 13 kD
Form/Buffer	Liquid in 0.42% Potassium phosphate, 0.87% Sodium chloride, pH 7.3, 30% glycerol, and 0.01% sodium azide.
Alternative Names	SUI1; Eukaryotic translation initiation factor 1; eIF1; A121; Protein translation factor SUI1 homolog; Sui1iso1
Gene Symbol	EIF1
Entrez Gene	10209(Human); 20918(Mouse)
SwissProt	P41567(Human); P48024(Mouse)

*AREX continuously optimizes our products. Webpage content may not reflect the latest updates. For inquiries, please contact info@arexbio.com or your local distributor.

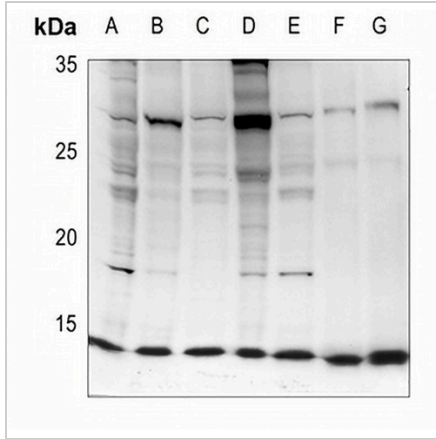
*Clone Number, Reactivity, Source/Host and Clonality can be found in the product name and Key Features section above.

DATASHEET

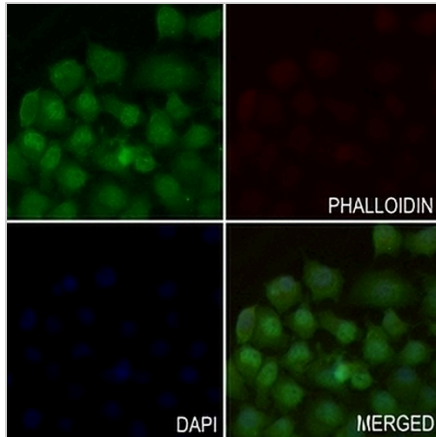
EIF1 Rabbit Polyclonal Antibody

CAT. NO. APA09232

DATA



Western blot analysis of EIF1 expression in A549 (A), Raw264.7 (B), U87MG (C), THP1 (D), PC3 (E), rat lung (F), mouse spleen (G) whole cell lysates. (Predicted band size: 12 kD; Observed band size: 13 kD)



Immunofluorescent analysis of EIF1 staining in A549 cells. Formalin-fixed cells were permeabilized with 0.1% Triton X-100 in TBS for 5-10 minutes and blocked with 3% BSA-PBS for 30 minutes at room temperature. Cells were probed with the primary antibody in 3% BSA-PBS and incubated overnight at 4 °C in a humidified chamber. Cells were washed with PBST and incubated with a AREX® Fluor 488 -conjugated secondary antibody (green) in PBS at room temperature in the dark. Phalloidin - AREX® Fluor 594 was used to stain Actin filaments (red). DAPI was used to stain the cell nuclei (blue).

STORAGE

Store at 4°C short term. For long term storage, store at -20°C, avoiding freeze/thaw cycles.

NOTE

For Research Use Only. Not for diagnostic, therapeutics, prophylactic or in vivo use.