

## DATASHEET

# ETV4 Rabbit Polyclonal Antibody

CAT. NO. APA09248

### KEY FEATURES

Target	ETV4	Source / Host	Rabbit
Reactivity	Human, Mouse, Rat, Dog	Clonality	Polyclonal
Applications	WB, IHC	Conjugation	Unconjugated
Form / Buffer	Liquid in 0.42% Potassium phosphate, 0.87% Sodium chloride, pH 7.3, 30% glycerol, and 0.01% sodium azide.		Storage at-20°C

### BACKGROUND

Transcriptional activator . Regulates the positioning of motor neurons within the lateral medial column of the spinal cord and controls the terminal arborization of specific motor neuron axons within their target muscles . Required for the expression of CDH8 and SEMA3E in ETV4-expressing motor neurons and for the exclusion of CDH7 expression from these neurons . May play a role in keratinocyte differentiation .

### APPLICATION

To ensure optimal assay performance, AREX recommends conducting reagent titration tailored to each testing system for optimal detection results.

WB	1:500 - 1:1000
IHC	1:100 - 1:200

\*Results are sample-specific. Please refer to your local assay conditions and test parameters for reference.

### PRODUCT OVERVIEW

Description	Rabbit polyclonal antibody to ETV4
Specificity	Recognizes endogenous levels of ETV4 protein.
Antibody Type	Primary antibody
Immunogen	KLH-conjugated synthetic peptide encompassing a sequence within the center region of human ETV4. The exact sequence is proprietary.
Purification	The antibody was purified by immunogen affinity chromatography.
Molecular Weight	Predicted: 53 kD; Observed: 54 kD
Form/Buffer	Liquid in 0.42% Potassium phosphate, 0.87% Sodium chloride, pH 7.3, 30% glycerol, and 0.01% sodium azide.
Alternative Names	E1AF; PEA3; ETS translocation variant 4; Adenovirus E1A enhancer-binding protein; E1A-F; Polyomavirus enhancer activator 3 homolog; Protein PEA3
Gene Symbol	ETV4
Entrez Gene	2118(Human); 18612(Mouse)
SwissProt	P43268(Human); P28322(Mouse)

\*AREX continuously optimizes our products. Webpage content may not reflect the latest updates. For inquiries, please contact [info@arexbio.com](mailto:info@arexbio.com) or your local distributor.

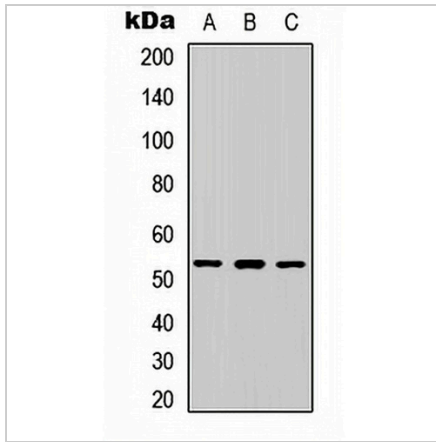
\*Clone Number, Reactivity, Source/Host and Clonality can be found in the product name and Key Features section above.

**DATASHEET**

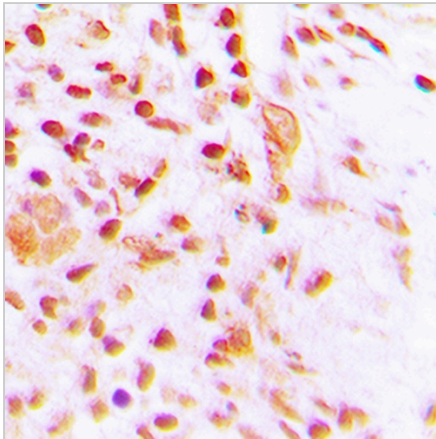
**ETV4 Rabbit Polyclonal Antibody**

CAT. NO. APA09248

**DATA**



Western blot analysis of ETV4 expression in HeLa (A), Raw264.7 (B), PC12 (C) whole cell lysates. (Predicted band size: 53 kD; Observed band size: 54 kD)



Immunohistochemical analysis of ETV4 staining in human lung cancer formalin fixed paraffin embedded tissue section. The section was pre-treated using heat mediated antigen retrieval with sodium citrate buffer (pH 6.0). The section was then incubated with the antibody at room temperature and detected using an HRP conjugated compact polymer system. DAB was used as the chromogen. The section was then counterstained with haematoxylin and mounted with DPX.

**STORAGE**

Store at 4°C short term. For long term storage, store at -20°C, avoiding freeze/thaw cycles.

**NOTE**

For Research Use Only. Not for diagnostic, therapeutics, prophylactic or in vivo use.