

DATASHEET

FGF23 Rabbit Polyclonal Antibody

CAT. NO. APA09254

KEY FEATURES

Target	FGF23	Source / Host	Rabbit
Reactivity	Human, Mouse, Rat	Clonality	Polyclonal
Applications	WB, IF/ICC	Conjugation	Unconjugated
Form / Buffer	Liquid in 0.42% Potassium phosphate, 0.87% Sodium chloride, pH 7.3, 30% glycerol, and 0.01% sodium azide.		Storage at-20°C

BACKGROUND

Regulator of phosphate homeostasis . Inhibits renal tubular phosphate transport by reducing SLC34A1 levels . Up-regulates EGR1 expression in the presence of KL . Acts directly on the parathyroid to decrease PTH secretion . Regulator of vitamin-D metabolism . Negatively regulates osteoblast differentiation and matrix mineralization .

APPLICATION

To ensure optimal assay performance, AREX recommends conducting reagent titration tailored to each testing system for optimal detection results.

WB	1:500 - 1:1000
IF/ICC	1:50 - 1:200

*Results are sample-specific. Please refer to your local assay conditions and test parameters for reference.

PRODUCT OVERVIEW

Description	Rabbit polyclonal antibody to FGF23
Specificity	Recognizes endogenous levels of FGF23 protein.
Antibody Type	Primary antibody
Immunogen	KLH-conjugated synthetic peptide encompassing a sequence within the C-term region of human FGF23. The exact sequence is proprietary.
Purification	The antibody was purified by immunogen affinity chromatography.
Molecular Weight	Predicted: 27 kD; Observed: 28 kD
Form/Buffer	Liquid in 0.42% Potassium phosphate, 0.87% Sodium chloride, pH 7.3, 30% glycerol, and 0.01% sodium azide.
Alternative Names	HYPF; Fibroblast growth factor 23; FGF-23; Phosphatonin; Tumor-derived hypophosphatemia-inducing factor
Gene Symbol	FGF23
Entrez Gene	8074(Human); 64654(Mouse); 170583(Rat)
SwissProt	Q9GZV9(Human); Q9EPC2(Mouse); Q8VI82(Rat)

*AREX continuously optimizes our products. Webpage content may not reflect the latest updates. For inquiries, please contact info@arexbio.com or your local distributor.

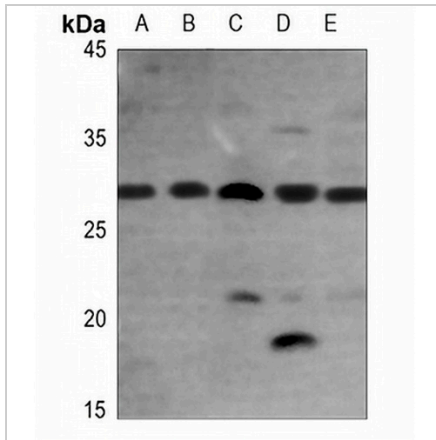
*Clone Number, Reactivity, Source/Host and Clonality can be found in the product name and Key Features section above.

DATASHEET

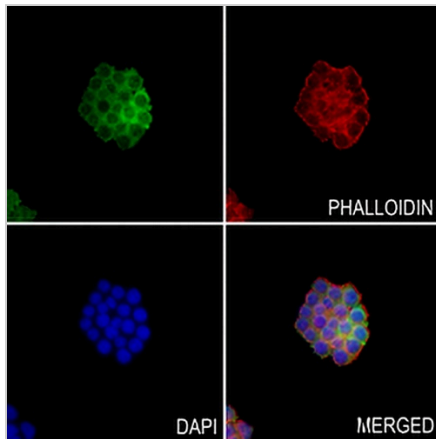
FGF23 Rabbit Polyclonal Antibody

CAT. NO. APA09254

DATA



Western blot analysis of FGF23 expression in A549 (A), U2OS (B), mouse liver (C), mouse heart (D), rat liver (E) whole cell lysates. (Predicted band size: 27 kD; Observed band size: 28 kD)



Immunofluorescent analysis of FGF23 staining in MDAMB231 cells. Formalin-fixed cells were permeabilized with 0.1% Triton X-100 in TBS for 5-10 minutes and blocked with 3% BSA-PBS for 30 minutes at room temperature. Cells were probed with the primary antibody in 3% BSA-PBS and incubated overnight at 4 °C in a humidified chamber. Cells were washed with PBST and incubated with a AREX® Fluor 488 -conjugated secondary antibody (green) in PBS at room temperature in the dark. Phalloidin - AREX® Fluor 594 was used to stain Actin filaments (red). DAPI was used to stain the cell nuclei (blue).

STORAGE

Store at 4°C short term. For long term storage, store at -20°C, avoiding freeze/thaw cycles.

NOTE

For Research Use Only. Not for diagnostic, therapeutics, prophylactic or in vivo use.