

**DATASHEET**

**GABRB1 (Phospho-S434) Rabbit Polyclonal Antibody**

CAT. NO. APA09265

**KEY FEATURES**

Target	GABRB1 (Phospho-S434)	Source / Host	Rabbit
Reactivity	Human, Mouse, Rat, Bovine	Clonality	Polyclonal
Applications	WB, IHC, IF/ICC	Conjugation	Unconjugated
Form / Buffer	Liquid in 0.42% Potassium phosphate, 0.87% Sodium chloride, pH 7.3, 30% glycerol, and 0.01% sodium azide.	Storage	at-20°C

**BACKGROUND**

Beta subunit of the heteropentameric ligand-gated chloride channel gated by gamma-aminobutyric acid (GABA), a major inhibitory neurotransmitter in the brain, a major inhibitory neurotransmitter in the brain. GABA-gated chloride channels, also named GABA(A) receptors (GABAAR), consist of five subunits arranged around a central pore and contain one or two GABA active binding sites located at the alpha and beta subunit interfaces, depending on subunit composition. When activated by GABA, GABAARs selectively allow the flow of chloride anions across the cell membrane down their electrochemical gradient. Chloride influx into the postsynaptic neuron following GABAAR opening decreases the neuron ability to generate a new action potential, thereby reducing nerve transmission.

**APPLICATION**

To ensure optimal assay performance, AREX recommends conducting reagent titration tailored to each testing system for optimal detection results.

WB	1:500 - 1:1000
IHC	1:100 - 1:200
IF/ICC	1:100 - 1:500

\*Results are sample-specific. Please refer to your local assay conditions and test parameters for reference.

**PRODUCT OVERVIEW**

Description	Rabbit polyclonal antibody to GABRB1 (Phospho-S434)
Specificity	Recognizes endogenous levels of GABRB1 protein only when phosphorylated at S434.
Antibody Type	Primary antibody
Immunogen	KLH-conjugated synthetic phosphopeptide corresponding to residues surrounding S434 of human GABRB1 protein. The exact sequence is proprietary.
Purification	The antibody was purified by immunogen affinity chromatography.
Molecular Weight	Predicted: 54 kD; Observed: 65 kD
Form/Buffer	Liquid in 0.42% Potassium phosphate, 0.87% Sodium chloride, pH 7.3, 30% glycerol, and 0.01% sodium azide.
Alternative Names	Gamma-aminobutyric acid receptor subunit beta-1; GABA(A) receptor subunit beta-1
Gene Symbol	GABRB1
Entrez Gene	2560(Human); 14400(Mouse); 25450(Rat)
SwissProt	P18505(Human); P50571(Mouse); P15431(Rat)

\*AREX continuously optimizes our products. Webpage content may not reflect the latest updates. For inquiries, please contact [info@arexbio.com](mailto:info@arexbio.com) or your local distributor.

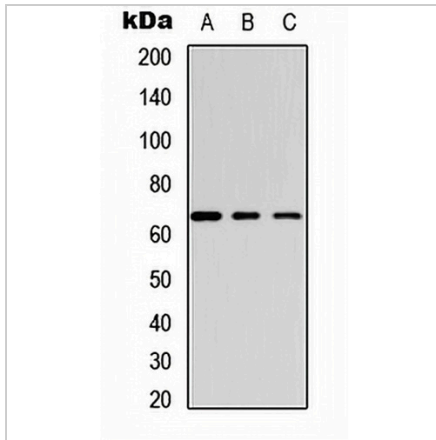
\*Clone Number, Reactivity, Source/Host and Clonality can be found in the product name and Key Features section above.

**DATASHEET**

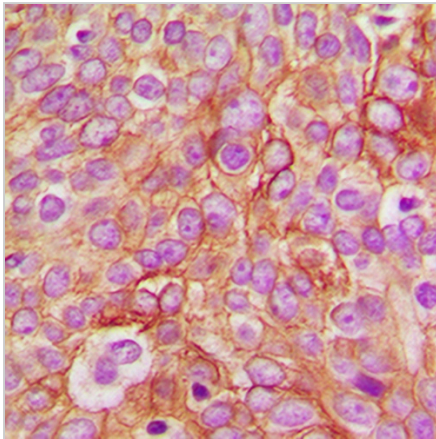
**GABRB1 (Phospho-S434) Rabbit Polyclonal Antibody**

CAT. NO. APA09265

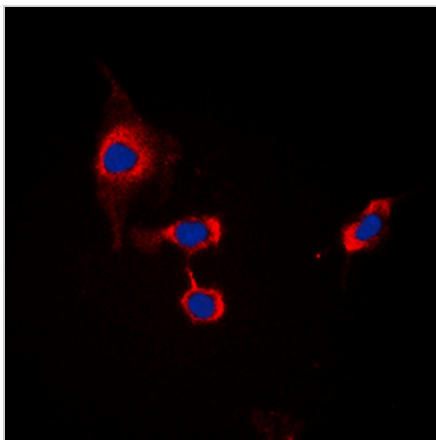
**DATA**



Western blot analysis of GABRB1 (Phospho-S434) expression in HeLa (A), mouse brain (B), rat brain (C) whole cell lysates. (Predicted band size: 54 kD; Observed band size: 65 kD)



Immunohistochemical analysis of GABRB1 (Phospho-S434) staining in human breast cancer formalin fixed paraffin embedded tissue section. The section was pre-treated using heat mediated antigen retrieval with sodium citrate buffer (pH 6.0). The section was then incubated with the antibody at room temperature and detected using an HRP conjugated compact polymer system. DAB was used as the chromogen. The section was then counterstained with haematoxylin and mounted with DPX.



Immunofluorescent analysis of GABRB1 (Phospho-S434) staining in MCF7 cells. Formalin-fixed cells were permeabilized with 0.1% Triton X-100 in TBS for 5-10 minutes and blocked with 3% BSA-PBS for 30 minutes at room temperature. Cells were probed with the primary antibody in 3% BSA-PBS and incubated overnight at 4 °C in a humidified chamber. Cells were washed with PBST and incubated with a DyLight 594-conjugated secondary antibody (red) in PBS at room temperature in the dark. DAPI was used to stain the cell nuclei (blue).

**STORAGE**

Store at 4°C short term. For long term storage, store at -20°C, avoiding freeze/thaw cycles.

**NOTE**

For Research Use Only. Not for diagnostic, therapeutics, prophylactic or in vivo use.