

DATASHEET

CRIF1 Rabbit Polyclonal Antibody

CAT. NO. APA09266

KEY FEATURES

Target	CRIF1	Source / Host	Rabbit
Reactivity	Human	Clonality	Polyclonal
Applications	WB	Conjugation	Unconjugated
Form / Buffer	Liquid in 0.42% Potassium phosphate, 0.87% Sodium chloride, pH 7.3, 30% glycerol, and 0.01% sodium azide.		Storage at-20°C

BACKGROUND

Acts as a negative regulator of G1 to S cell cycle phase progression by inhibiting cyclin-dependent kinases. Inhibitory effects are additive with GADD45 proteins but also occur in the absence of GADD45 proteins. Acts as a repressor of the orphan nuclear receptor NR4A1 by inhibiting AB domain-mediated transcriptional activity. May be involved in the hormone-mediated regulation of NR4A1 transcriptional activity. May play a role in mitochondrial protein synthesis.

APPLICATION

To ensure optimal assay performance, AREX recommends conducting reagent titration tailored to each testing system for optimal detection results.

WB	1:500 - 1:1000
----	----------------

*Results are sample-specific. Please refer to your local assay conditions and test parameters for reference.

PRODUCT OVERVIEW

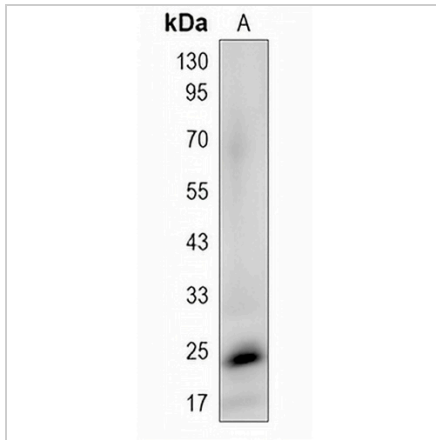
Description	Rabbit polyclonal antibody to CRIF1
Specificity	Recognizes endogenous levels of CRIF1 protein.
Antibody Type	Primary antibody
Immunogen	KLH-conjugated synthetic peptide encompassing a sequence within the center region of human CRIF1. The exact sequence is proprietary.
Purification	The antibody was purified by immunogen affinity chromatography.
Molecular Weight	Predicted: 25 kD; Observed: 24 kD
Form/Buffer	Liquid in 0.42% Potassium phosphate, 0.87% Sodium chloride, pH 7.3, 30% glycerol, and 0.01% sodium azide.
Alternative Names	MRPL59; PLINP1; PRG6; Growth arrest and DNA damage-inducible proteins-interacting protein 1; 39S ribosomal protein L59 mitochondrial; MRP-L59; CKII beta-associating protein; CR6-interacting factor 1; CRIF1; Papillomavirus L2-interacting nuclear protein 1; PLINP; PLINP-1; p53-responsive gene 6 protein
Gene Symbol	GADD45GIP1
Entrez Gene	90480(Human)
SwissProt	Q8TAE8(Human)

*AREX continuously optimizes our products. Webpage content may not reflect the latest updates. For inquiries, please contact info@arexbio.com or your local distributor.

*Clone Number, Reactivity, Source/Host and Clonality can be found in the product name and Key Features section above.

DATASHEET**CRIF1 Rabbit Polyclonal Antibody**

CAT. NO. APA09266

DATA

Western blot analysis of CRIF1 expression in HEK293 (A) whole cell lysates. (Predicted band size: 25 kD; Observed band size: 24 kD)

STORAGE

Store at 4°C short term. For long term storage, store at -20°C, avoiding freeze/thaw cycles.

NOTE

For Research Use Only. Not for diagnostic, therapeutics, prophylactic or in vivo use.