

**DATASHEET**

**Granzyme M Rabbit Polyclonal Antibody**

CAT. NO. APA09297

**KEY FEATURES**

Target	Granzyme M	Source / Host	Rabbit
Reactivity	Human, Mouse, Rat	Clonality	Polyclonal
Applications	WB	Conjugation	Unconjugated
Form / Buffer	Liquid in 0.42% Potassium phosphate, 0.87% Sodium chloride, pH 7.3, 30% glycerol, and 0.01% sodium azide.		Storage at -20°C

**BACKGROUND**

Cleaves peptide substrates after methionine, leucine, and norleucine. Physiological substrates include EZR, alpha-tubulins and the apoptosis inhibitor BIRC5/Survivin. Promotes caspase activation and subsequent apoptosis of target cells.

**APPLICATION**

To ensure optimal assay performance, AREX recommends conducting reagent titration tailored to each testing system for optimal detection results.

WB	1:500 - 1:1000
----	----------------

\*Results are sample-specific. Please refer to your local assay conditions and test parameters for reference.

**PRODUCT OVERVIEW**

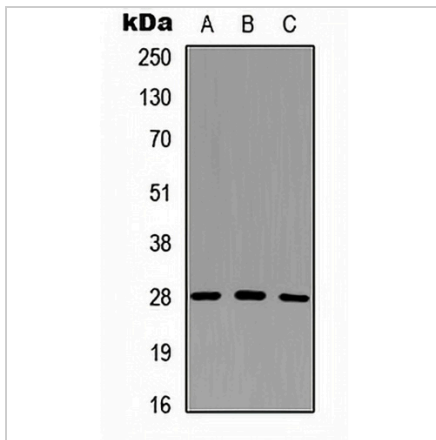
Description	Rabbit polyclonal antibody to Granzyme M
Specificity	Recognizes endogenous levels of Granzyme M protein.
Antibody Type	Primary antibody
Immunogen	KLH-conjugated synthetic peptide encompassing a sequence within the C-term region of human Granzyme M. The exact sequence is proprietary.
Purification	The antibody was purified by immunogen affinity chromatography.
Molecular Weight	Predicted: 27 kD; Observed: 28 kD
Form/Buffer	Liquid in 0.42% Potassium phosphate, 0.87% Sodium chloride, pH 7.3, 30% glycerol, and 0.01% sodium azide.
Alternative Names	MET1; Granzyme M; Met-1 serine protease; Hu-Met-1; Met-ase; Natural killer cell granular protease
Gene Symbol	GZMM
Entrez Gene	3004(Human)
SwissProt	P51124(Human); Q03238(Rat)

\*AREX continuously optimizes our products. Webpage content may not reflect the latest updates. For inquiries, please contact [info@arexbio.com](mailto:info@arexbio.com) or your local distributor.

\*Clone Number, Reactivity, Source/Host and Clonality can be found in the product name and Key Features section above.

**DATASHEET****Granzyme M Rabbit Polyclonal Antibody**

CAT. NO. APA09297

**DATA**

Western blot analysis of Granzyme M expression in HeLa (A), PC12 (B), NS-1 (C) whole cell lysates. (Predicted band size: 27 kD; Observed band size: 28 kD)

**STORAGE**

Store at 4°C short term. For long term storage, store at -20°C, avoiding freeze/thaw cycles.

**NOTE**

For Research Use Only. Not for diagnostic, therapeutics, prophylactic or in vivo use.