

DATASHEET

HAND1 Rabbit Polyclonal Antibody

CAT. NO. APA09300

KEY FEATURES

Target	HAND1	Source / Host	Rabbit
Reactivity	Human, Rat, Bovine, Pig, Rabbit, Sheep	Clonality	Polyclonal
Applications	WB, IF/ICC	Conjugation	Unconjugated
Form / Buffer	Liquid in 0.42% Potassium phosphate, 0.87% Sodium chloride, pH 7.3, 30% glycerol, and 0.01% sodium azide.		Storage at-20°C

BACKGROUND

Transcription factor that plays an essential role in both trophoblast giant cell differentiation and in cardiac morphogenesis . Binds the DNA sequence 5'-NRTCTG-3' (non-canonical E-box) . Acts as a transcriptional repressor of SOX15 . In the adult, could be required for ongoing expression of cardiac-specific genes . Acts as a transcriptional repressor of SOX15 . In the adult, could be required for ongoing expression of cardiac-specific genes .

APPLICATION

To ensure optimal assay performance, AREX recommends conducting reagent titration tailored to each testing system for optimal detection results.

WB	1:500 - 1:1000
IF/ICC	1:100 - 1:500

*Results are sample-specific. Please refer to your local assay conditions and test parameters for reference.

PRODUCT OVERVIEW

Description	Rabbit polyclonal antibody to HAND1
Specificity	Recognizes endogenous levels of HAND1 protein.
Antibody Type	Primary antibody
Immunogen	KLH-conjugated synthetic peptide encompassing a sequence within the C-term region of human HAND1. The exact sequence is proprietary.
Purification	The antibody was purified by immunogen affinity chromatography.
Molecular Weight	Predicted: 23 kD; Observed: 25 kD
Form/Buffer	Liquid in 0.42% Potassium phosphate, 0.87% Sodium chloride, pH 7.3, 30% glycerol, and 0.01% sodium azide.
Alternative Names	BHLHA27; EHAND; Heart- and neural crest derivatives-expressed protein 1; Class A basic helix-loop-helix protein 27; bHLHa27; Extraembryonic tissues, heart, autonomic nervous system and neural crest derivatives-expressed protein 1; eHAND
Gene Symbol	HAND1
Entrez Gene	9421(Human); 15110(Mouse); 59112(Rat)
SwissProt	O96004(Human); Q64279(Mouse); P97832(Rat)

*AREX continuously optimizes our products. Webpage content may not reflect the latest updates. For inquiries, please contact info@arexbio.com or your local distributor.

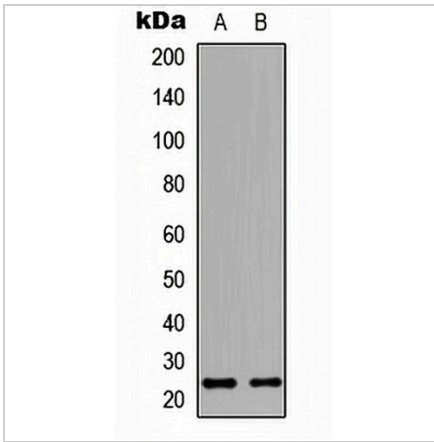
*Clone Number, Reactivity, Source/Host and Clonality can be found in the product name and Key Features section above.

DATASHEET

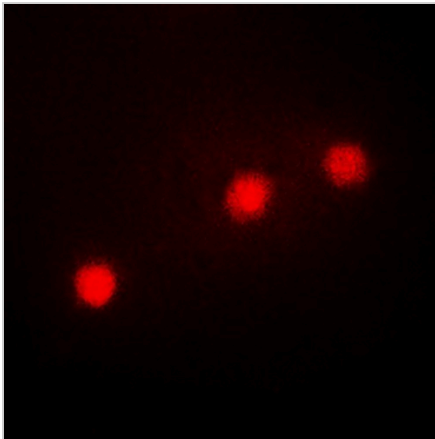
HAND1 Rabbit Polyclonal Antibody

CAT. NO. APA09300

DATA



Western blot analysis of HAND1 expression in HeLa (A), H9C2 (B) whole cell lysates. (Predicted band size: 23 kD; Observed band size: 25 kD)



Immunofluorescent analysis of HAND1 staining in HeLa cells. Formalin-fixed cells were permeabilized with 0.1% Triton X-100 in TBS for 5-10 minutes and blocked with 3% BSA-PBS for 30 minutes at room temperature. Cells were probed with the primary antibody in 3% BSA-PBS and incubated overnight at 4 °C in a humidified chamber. Cells were washed with PBST and incubated with a DyLight 594-conjugated secondary antibody (red) in PBS at room temperature in the dark. DAPI was used to stain the cell nuclei (blue).

STORAGE

Store at 4°C short term. For long term storage, store at -20°C, avoiding freeze/thaw cycles.

NOTE

For Research Use Only. Not for diagnostic, therapeutics, prophylactic or in vivo use.