

**DATASHEET**

**Histone Deacetylase 6 (Phospho-S22) Rabbit Polyclonal Antibody**

CAT. NO. APA09304

**KEY FEATURES**

Target	Histone Deacetylase 6 (Phospho-S22)	Source / Host	Rabbit
Reactivity	Human, Monkey	Clonality	Polyclonal
Applications	WB, IHC, IF/ICC	Conjugation	Unconjugated
Form / Buffer	Liquid in 0.42% Potassium phosphate, 0.87% Sodium chloride, pH 7.3, 30% glycerol, and 0.01% sodium azide.		Storage at -20°C

**BACKGROUND**

Deacetylates a wide range of non-histone substrates . Plays a central role in microtubule-dependent cell motility by mediating deacetylation of tubulin . Required for cilia disassembly via deacetylation of alpha-tubulin . Alpha-tubulin deacetylation results in destabilization of dynamic microtubules . Promotes deacetylation of CTTN, leading to actin polymerization, promotion of autophagosome-lysosome fusion and completion of autophagy . Deacetylates SQSTM1 . Deacetylates peroxiredoxins PRDX1 and PRDX2, decreasing their reducing activity . Deacetylates antiviral protein RIGI in the presence of viral mRNAs which is required for viral RNA detection by RIGI .

**APPLICATION**

To ensure optimal assay performance, AREX recommends conducting reagent titration tailored to each testing system for optimal detection results.

WB	1:500 - 1:1000
IHC	1:100 - 1:200
IF/ICC	1:100 - 1:500

\*Results are sample-specific. Please refer to your local assay conditions and test parameters for reference.

**PRODUCT OVERVIEW**

Description	Rabbit polyclonal antibody to Histone Deacetylase 6 (Phospho-S22)
Specificity	Recognizes endogenous levels of Histone Deacetylase 6 protein only when phosphorylated at S22.
Antibody Type	Primary antibody
Immunogen	KLH-conjugated synthetic phosphopeptide corresponding to residues surrounding S22 of human Histone Deacetylase 6 protein. The exact sequence is proprietary.
Purification	The antibody was purified by immunogen affinity chromatography.
Molecular Weight	Predicted: 131 kD; Observed: 160 kD
Form/Buffer	Liquid in 0.42% Potassium phosphate, 0.87% Sodium chloride, pH 7.3, 30% glycerol, and 0.01% sodium azide.
Alternative Names	KIAA0901; Histone deacetylase 6; HD6
Gene Symbol	HDAC6
Entrez Gene	10013(Human); 15185(Mouse)
SwissProt	Q9UBN7(Human); Q9Z2V5(Mouse)

\*AREX continuously optimizes our products. Webpage content may not reflect the latest updates. For inquiries, please contact [info@arexbio.com](mailto:info@arexbio.com) or your local distributor.

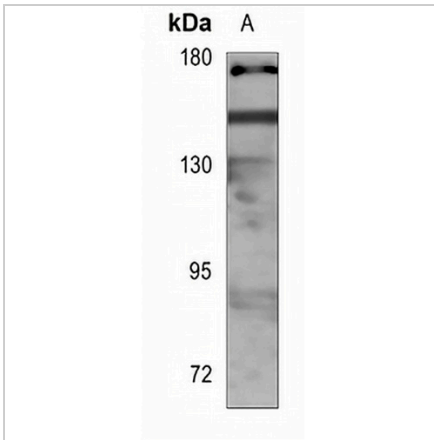
\*Clone Number, Reactivity, Source/Host and Clonality can be found in the product name and Key Features section above.

**DATASHEET**

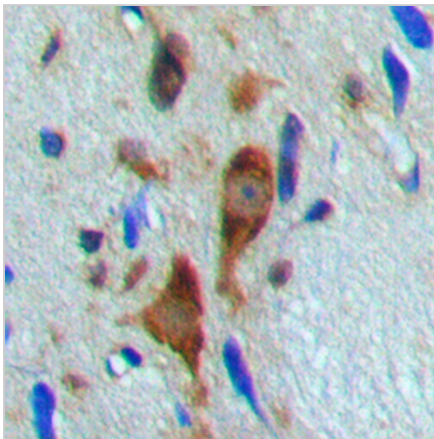
**Histone Deacetylase 6 (Phospho-S22) Rabbit Polyclonal Antibody**

CAT. NO. APA09304

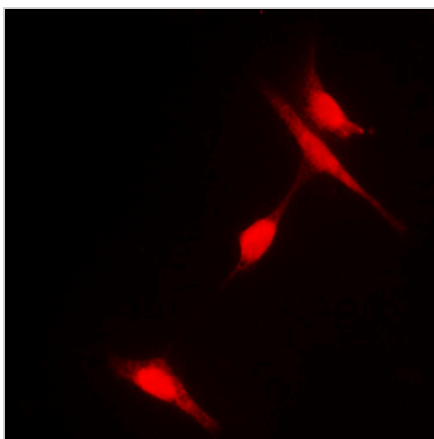
**DATA**



Western blot analysis of Histone Deacetylase 6 (Phospho-S22) expression in Jurkat (A) whole cell lysates. (Predicted band size: 131 kD; Observed band size: 160 kD)



Immunohistochemical analysis of Histone Deacetylase 6 (Phospho-S22) staining in human brain formalin fixed paraffin embedded tissue section. The section was pre-treated using heat mediated antigen retrieval with sodium citrate buffer (pH 6.0). The section was then incubated with the antibody at room temperature and detected using an HRP conjugated compact polymer system. DAB was used as the chromogen. The section was then counterstained with haematoxylin and mounted with DPX.



Immunofluorescent analysis of Histone Deacetylase 6 (Phospho-S22) staining in HeLa cells. Formalin-fixed cells were permeabilized with 0.1% Triton X-100 in TBS for 5-10 minutes and blocked with 3% BSA-PBS for 30 minutes at room temperature. Cells were probed with the primary antibody in 3% BSA-PBS and incubated overnight at 4 °C in a humidified chamber. Cells were washed with PBST and incubated with a DyLight 594-conjugated secondary antibody (red) in PBS at room temperature in the dark.

**STORAGE**

Store at 4°C short term. For long term storage, store at -20°C, avoiding freeze/thaw cycles.

**NOTE**

For Research Use Only. Not for diagnostic, therapeutics, prophylactic or in vivo use.