

DATASHEET

HOXC6 Rabbit Polyclonal Antibody

CAT. NO. APA09322

KEY FEATURES

| | | | |
|---------------|---|---------------|--------------|
| Target | HOXC6 | Source / Host | Rabbit |
| Reactivity | Human, Mouse, Rat, Monkey, Sheep | Clonality | Polyclonal |
| Applications | WB, IHC, IF/ICC | Conjugation | Unconjugated |
| Form / Buffer | Liquid in 0.42% Potassium phosphate, 0.87% Sodium chloride, pH 7.3, 30% glycerol, and 0.01% sodium azide. | Storage | at-20°C |

BACKGROUND

Sequence-specific transcription factor which is part of a developmental regulatory system that provides cells with specific positional identities on the anterior-posterior axis.

APPLICATION

To ensure optimal assay performance, AREX recommends conducting reagent titration tailored to each testing system for optimal detection results.

| | |
|--------|----------------|
| WB | 1:500 - 1:1000 |
| IHC | 1:100 - 1:200 |
| IF/ICC | 1:100 - 1:500 |

*Results are sample-specific. Please refer to your local assay conditions and test parameters for reference.

PRODUCT OVERVIEW

| | |
|-------------------|--|
| Description | Rabbit polyclonal antibody to HOXC6 |
| Specificity | Recognizes endogenous levels of HOXC6 protein. |
| Antibody Type | Primary antibody |
| Immunogen | KLH-conjugated synthetic peptide encompassing a sequence within the C-term region of human HOXC6. The exact sequence is proprietary. |
| Purification | The antibody was purified by immunogen affinity chromatography. |
| Molecular Weight | Predicted: 26 kD; Observed: 27 kD |
| Form/Buffer | Liquid in 0.42% Potassium phosphate, 0.87% Sodium chloride, pH 7.3, 30% glycerol, and 0.01% sodium azide. |
| Alternative Names | HOX3C; Homeobox protein Hox-C6; Homeobox protein CP25; Homeobox protein HHO.C8; Homeobox protein Hox-3C |
| Gene Symbol | HOXC6 |
| Entrez Gene | 3223(Human); 15425(Mouse) |
| SwissProt | P09630(Human); P10629(Mouse) |

*AREX continuously optimizes our products. Webpage content may not reflect the latest updates. For inquiries, please contact info@arexbio.com or your local distributor.

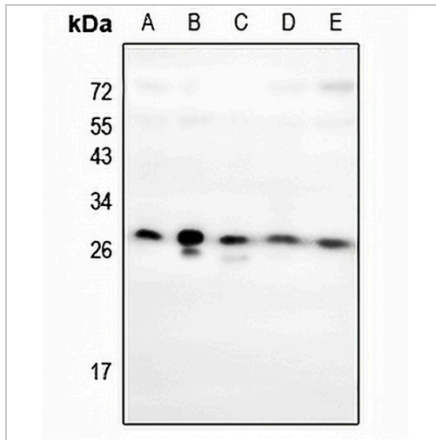
*Clone Number, Reactivity, Source/Host and Clonality can be found in the product name and Key Features section above.

DATASHEET

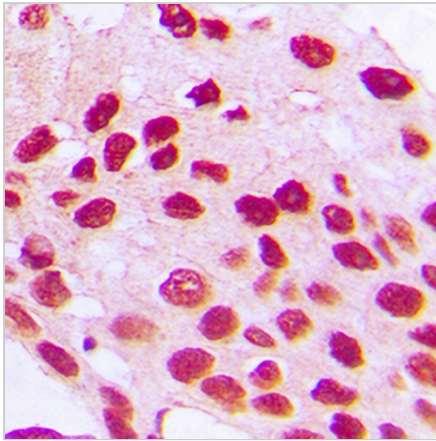
HOXC6 Rabbit Polyclonal Antibody

CAT. NO. APA09322

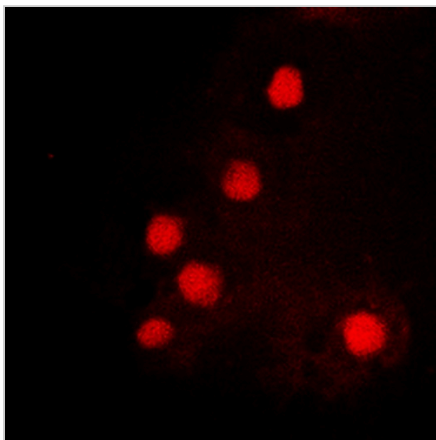
DATA



Western blot analysis of HOXC6 expression in A2780 (A), HEK293T (B), PC12 (C), 3T3L1 (D), PC3 (E) whole cell lysates. (Predicted band size: 26 kD; Observed band size: 27 kD)



Immunohistochemical analysis of HOXC6 staining in human prostate cancer formalin fixed paraffin embedded tissue section. The section was pre-treated using heat mediated antigen retrieval with sodium citrate buffer (pH 6.0). The section was then incubated with the antibody at room temperature and detected using an HRP conjugated compact polymer system. DAB was used as the chromogen. The section was then counterstained with haematoxylin and mounted with DPX.



Immunofluorescent analysis of HOXC6 staining in K562 cells. Formalin-fixed cells were permeabilized with 0.1% Triton X-100 in TBS for 5-10 minutes and blocked with 3% BSA-PBS for 30 minutes at room temperature. Cells were probed with the primary antibody in 3% BSA-PBS and incubated overnight at 4 °C in a humidified chamber. Cells were washed with PBST and incubated with a DyLight 594-conjugated secondary antibody (red) in PBS at room temperature in the dark.

STORAGE

Store at 4°C short term. For long term storage, store at -20°C, avoiding freeze/thaw cycles.

NOTE

For Research Use Only. Not for diagnostic, therapeutics, prophylactic or in vivo use.