

DATASHEET

IDO2 Rabbit Polyclonal Antibody

CAT. NO. APA09326

KEY FEATURES

Target	IDO2	Source / Host	Rabbit
Reactivity	Human, Mouse, Rat	Clonality	Polyclonal
Applications	WB	Conjugation	Unconjugated
Form / Buffer	Liquid in 0.42% Potassium phosphate, 0.87% Sodium chloride, pH 7.3, 30% glycerol, and 0.01% sodium azide.		Storage at -20°C

BACKGROUND

Catalyzes the first and rate limiting step of the catabolism of the essential amino acid tryptophan along the kynurenine pathway . Involved in immune regulation. May not play a significant role in tryptophan-related tumoral resistance .

APPLICATION

To ensure optimal assay performance, AREX recommends conducting reagent titration tailored to each testing system for optimal detection results.

WB	1:500 - 1:1000
----	----------------

*Results are sample-specific. Please refer to your local assay conditions and test parameters for reference.

PRODUCT OVERVIEW

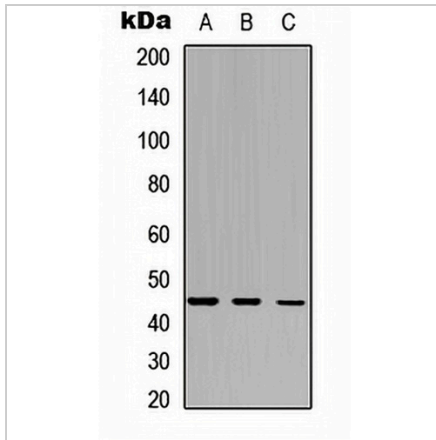
Description	Rabbit polyclonal antibody to IDO2
Specificity	Recognizes endogenous levels of IDO2 protein.
Antibody Type	Primary antibody
Immunogen	KLH-conjugated synthetic peptide encompassing a sequence within the center region of human IDO2. The exact sequence is proprietary.
Purification	The antibody was purified by immunogen affinity chromatography.
Molecular Weight	Predicted: 47 kD; Observed: 45 kD
Form/Buffer	Liquid in 0.42% Potassium phosphate, 0.87% Sodium chloride, pH 7.3, 30% glycerol, and 0.01% sodium azide.
Alternative Names	INDOL1; Indoleamine 2,3-dioxygenase 2; IDO-2; Indoleamine 2,3-dioxygenase-like protein 1; Indoleamine-pyrrole 2,3-dioxygenase-like protein 1
Gene Symbol	IDO2
Entrez Gene	169355(Human)
SwissProt	Q6ZQW0(Human); Q8R0V5(Mouse)

*AREX continuously optimizes our products. Webpage content may not reflect the latest updates. For inquiries, please contact info@arexbio.com or your local distributor.

*Clone Number, Reactivity, Source/Host and Clonality can be found in the product name and Key Features section above.

DATASHEET**IDO2 Rabbit Polyclonal Antibody**

CAT. NO. APA09326

DATA

Western blot analysis of IDO2 expression in HepG2 (A), Raw264.7 (B), PC12 (C) whole cell lysates. (Predicted band size: 47 kD; Observed band size: 45 kD)

STORAGE

Store at 4°C short term. For long term storage, store at -20°C, avoiding freeze/thaw cycles.

NOTE

For Research Use Only. Not for diagnostic, therapeutics, prophylactic or in vivo use.