

DATASHEET

IL-17D Rabbit Polyclonal Antibody

CAT. NO. APA09332

KEY FEATURES

Target	IL-17D	Source / Host	Rabbit
Reactivity	Human, Mouse, Rat	Clonality	Polyclonal
Applications	WB	Conjugation	Unconjugated
Form / Buffer	Liquid in 0.42% Potassium phosphate, 0.87% Sodium chloride, pH 7.3, 30% glycerol, and 0.01% sodium azide.		Storage at -20°C

BACKGROUND

Induces expression of IL6, CXCL8/IL8, and CSF2/GM-CSF from endothelial cells.

APPLICATION

To ensure optimal assay performance, AREX recommends conducting reagent titration tailored to each testing system for optimal detection results.

WB	1:500 - 1:1000
----	----------------

*Results are sample-specific. Please refer to your local assay conditions and test parameters for reference.

PRODUCT OVERVIEW

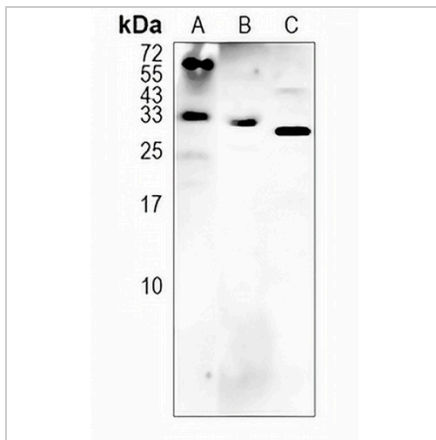
Description	Rabbit polyclonal antibody to IL-17D
Specificity	Recognizes endogenous levels of IL-17D protein.
Antibody Type	Primary antibody
Immunogen	KLH-conjugated synthetic peptide encompassing a sequence within the C-term region of human IL-17D. The exact sequence is proprietary.
Purification	The antibody was purified by immunogen affinity chromatography.
Molecular Weight	Predicted: 21 kD; Observed: 28-30 kD
Form/Buffer	Liquid in 0.42% Potassium phosphate, 0.87% Sodium chloride, pH 7.3, 30% glycerol, and 0.01% sodium azide.
Alternative Names	IL27; Interleukin-17D; IL-17D; Interleukin-27; IL-27
Gene Symbol	IL17D
Entrez Gene	53342(Human)
SwissProt	Q8TAD2(Human)

*AREX continuously optimizes our products. Webpage content may not reflect the latest updates. For inquiries, please contact info@arexbio.com or your local distributor.

*Clone Number, Reactivity, Source/Host and Clonality can be found in the product name and Key Features section above.

DATASHEET**IL-17D Rabbit Polyclonal Antibody**

CAT. NO. APA09332

DATA

Western blot analysis of IL-17D expression in HUT78 (A), mouse muscle (B), rat brain (C) whole cell lysates. (Predicted band size: 21 kD; Observed band size: 28-30 kD)

STORAGE

Store at 4°C short term. For long term storage, store at -20°C, avoiding freeze/thaw cycles.

NOTE

For Research Use Only. Not for diagnostic, therapeutics, prophylactic or in vivo use.