

**DATASHEET**

**IL-3 Rabbit Polyclonal Antibody**

CAT. NO. APA09335

**KEY FEATURES**

Target	IL-3	Source / Host	Rabbit
Reactivity	Human, Mouse, Rat	Clonality	Polyclonal
Applications	WB	Conjugation	Unconjugated
Form / Buffer	Liquid in 0.42% Potassium phosphate, 0.87% Sodium chloride, pH 7.3, 30% glycerol, and 0.01% sodium azide.		Storage at-20°C

**BACKGROUND**

Cytokine secreted predominantly by activated T-lymphocytes as well as mast cells and osteoblastic cells that controls the production and differentiation of hematopoietic progenitor cells into lineage-restricted cells . Also stimulates mature basophils, eosinophils, and monocytes to become functionally activated . In addition, plays an important role in neural cell proliferation and survival . Participates as well in bone homeostasis and inhibits osteoclast differentiation by preventing NF-kappa-B nuclear translocation and activation . Mechanistically, exerts its biological effects through a receptor composed of IL3RA subunit and a signal transducing subunit IL3RB .

**APPLICATION**

To ensure optimal assay performance, AREX recommends conducting reagent titration tailored to each testing system for optimal detection results.

WB	1:500 - 1:1000
----	----------------

\*Results are sample-specific. Please refer to your local assay conditions and test parameters for reference.

**PRODUCT OVERVIEW**

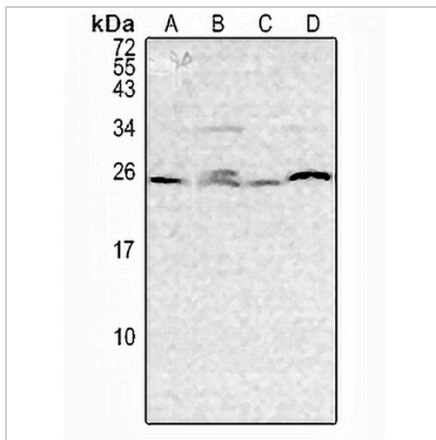
Description	Rabbit polyclonal antibody to IL-3
Specificity	Recognizes endogenous levels of IL-3 protein.
Antibody Type	Primary antibody
Immunogen	KLH-conjugated synthetic peptide encompassing a sequence within the center region of human IL-3. The exact sequence is proprietary.
Purification	The antibody was purified by immunogen affinity chromatography.
Molecular Weight	Predicted: 17 kD; Observed: 25 kD
Form/Buffer	Liquid in 0.42% Potassium phosphate, 0.87% Sodium chloride, pH 7.3, 30% glycerol, and 0.01% sodium azide.
Alternative Names	Interleukin-3; IL-3; Hematopoietic growth factor; Mast cell growth factor; MCGF; Multipotential colony-stimulating factor; P-cell-stimulating factor
Gene Symbol	IL3
Entrez Gene	3562(Human); 16187(Mouse)
SwissProt	P08700(Human); P01586(Mouse); P04823(Rat)

\*AREX continuously optimizes our products. Webpage content may not reflect the latest updates. For inquiries, please contact [info@arexbio.com](mailto:info@arexbio.com) or your local distributor.

\*Clone Number, Reactivity, Source/Host and Clonality can be found in the product name and Key Features section above.

**DATASHEET****IL-3 Rabbit Polyclonal Antibody**

CAT. NO. APA09335

**DATA**

Western blot analysis of IL-3 expression in HEK293T (A), mouse liver (B), mouse testis (C), rat liver (D) whole cell lysates. (Predicted band size: 17 kD; Observed band size: 25 kD)

**STORAGE**

Store at 4°C short term. For long term storage, store at -20°C, avoiding freeze/thaw cycles.

**NOTE**

For Research Use Only. Not for diagnostic, therapeutics, prophylactic or in vivo use.