

**DATASHEET**

**Inhibin alpha Rabbit Polyclonal Antibody**

CAT. NO. APA09338

**KEY FEATURES**

Target	Inhibin alpha	Source / Host	Rabbit
Reactivity	Human, Mouse, Rat, Bovine, Rabbit, Sheep	Clonality	Polyclonal
Applications	WB, IHC	Conjugation	Unconjugated
Form / Buffer	Liquid in 0.42% Potassium phosphate, 0.87% Sodium chloride, pH 7.3, 30% glycerol, and 0.01% sodium azide.		Storage at -20°C

**BACKGROUND**

Inhibins and activins inhibit and activate, respectively, the secretion of follitropin by the pituitary gland. Inhibins/activins are involved in regulating a number of diverse functions such as hypothalamic and pituitary hormone secretion, gonadal hormone secretion, germ cell development and maturation, erythroid differentiation, insulin secretion, nerve cell survival, embryonic axial development or bone growth, depending on their subunit composition. Inhibins appear to oppose the functions of activins.; Inhibin A is a dimer of alpha/INHA and beta-A/INHBA that functions as a feedback regulator in the hypothalamic-pituitary-gonadal (HPG) axis. Inhibits the secretion of FSH from the anterior pituitary gland by acting on pituitary gonadotrope cells.

**APPLICATION**

To ensure optimal assay performance, AREX recommends conducting reagent titration tailored to each testing system for optimal detection results.

WB	1:500 - 1:1000
IHC	1:50 - 1:100

\*Results are sample-specific. Please refer to your local assay conditions and test parameters for reference.

**PRODUCT OVERVIEW**

Description	Rabbit polyclonal antibody to Inhibin alpha
Specificity	Recognizes endogenous levels of Inhibin alpha protein.
Antibody Type	Primary antibody
Immunogen	KLH-conjugated synthetic peptide encompassing a sequence within the center region of human Inhibin alpha. The exact sequence is proprietary.
Purification	The antibody was purified by immunogen affinity chromatography.
Molecular Weight	Predicted: 39 kD; Observed: 33; 48 kD
Form/Buffer	Liquid in 0.42% Potassium phosphate, 0.87% Sodium chloride, pH 7.3, 30% glycerol, and 0.01% sodium azide.
Alternative Names	Inhibin alpha chain
Gene Symbol	INHA
Entrez Gene	3623(Human); 16322(Mouse); 24504(Rat)
SwissProt	P05111(Human); Q04997(Mouse); P17490(Rat)

\*AREX continuously optimizes our products. Webpage content may not reflect the latest updates. For inquiries, please contact [info@arexbio.com](mailto:info@arexbio.com) or your local distributor.

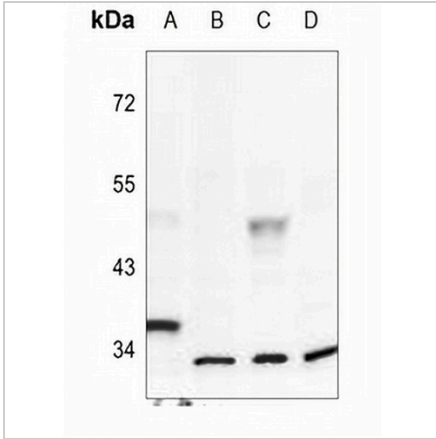
\*Clone Number, Reactivity, Source/Host and Clonality can be found in the product name and Key Features section above.

**DATASHEET**

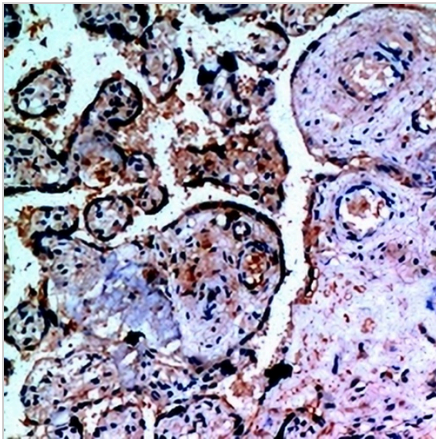
**Inhibin alpha Rabbit Polyclonal Antibody**

CAT. NO. APA09338

**DATA**



Western blot analysis of Inhibin alpha expression in rat ovary (A), PC3 (B), H9C2 (C), BV2 (D) whole cell lysates. (Predicted band size: 39 kD; Observed band size: 33; 48 kD)



Immunohistochemical analysis of Inhibin alpha staining in human placenta formalin fixed paraffin embedded tissue section. The section was pre-treated using heat mediated antigen retrieval with sodium citrate buffer (pH 6.0). The section was then incubated with the antibody at room temperature and detected using an HRP conjugated compact polymer system. DAB was used as the chromogen. The section was then counterstained with haematoxylin and mounted with DPX.

**STORAGE**

Store at 4°C short term. For long term storage, store at -20°C, avoiding freeze/thaw cycles.

**NOTE**

For Research Use Only. Not for diagnostic, therapeutics, prophylactic or in vivo use.