

**DATASHEET**

**CD18 Rabbit Polyclonal Antibody**

CAT. NO. APA09345

**KEY FEATURES**

Target	CD18	Source / Host	Rabbit
Reactivity	Human, Mouse, Rat	Clonality	Polyclonal
Applications	WB	Conjugation	Unconjugated
Form / Buffer	Liquid in 0.42% Potassium phosphate, 0.87% Sodium chloride, pH 7.3, 30% glycerol, and 0.01% sodium azide.		Storage at-20°C

**BACKGROUND**

Integrin ITGAL:ITGB2 is a receptor for ICAM1, ICAM2 and ICAM3 . Integrin ITGAL:ITGB2 is also a receptor for the secreted form of ubiquitin-like protein ISG15; the interaction is mediated by ITGAL . Integrins ITGAM:ITGB2 and ITGAX:ITGB2 are receptors for the iC3b fragment of the third complement component and for fibrinogen. Integrin ITGAX:ITGB2 recognizes the sequence G-P-R in fibrinogen alpha-chain. Integrin ITGAM:ITGB2 recognizes P1 and P2 peptides of fibrinogen gamma chain. Integrin ITGAM:ITGB2 is also a receptor for factor X. Integrin ITGAD:ITGB2 is a receptor for ICAM3 and VCAM1 . Contributes to natural killer cell cytotoxicity . Involved in leukocyte adhesion and transmigration of leukocytes including T-cells and neutrophils .

**APPLICATION**

To ensure optimal assay performance, AREX recommends conducting reagent titration tailored to each testing system for optimal detection results.

WB	1:500 - 1:1000
----	----------------

\*Results are sample-specific. Please refer to your local assay conditions and test parameters for reference.

**PRODUCT OVERVIEW**

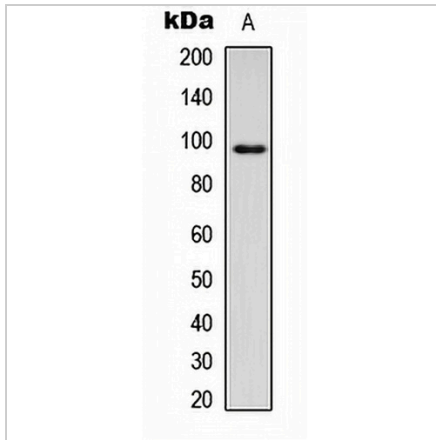
Description	Rabbit polyclonal antibody to CD18
Specificity	Recognizes endogenous levels of CD18 protein.
Antibody Type	Primary antibody
Immunogen	KLH-conjugated synthetic peptide encompassing a sequence within the center region of human CD18. The exact sequence is proprietary.
Purification	The antibody was purified by immunogen affinity chromatography.
Molecular Weight	Predicted: 84 kD; Observed: 100 kD
Form/Buffer	Liquid in 0.42% Potassium phosphate, 0.87% Sodium chloride, pH 7.3, 30% glycerol, and 0.01% sodium azide.
Alternative Names	CD18; MFI7; Integrin beta-2; Cell surface adhesion glycoproteins LFA-1/CR3/p150,95 subunit beta; Complement receptor C3 subunit beta; CD18
Gene Symbol	ITGB2
Entrez Gene	3689(Human); 16414(Mouse)
SwissProt	P05107(Human); P11835(Mouse)

\*AREX continuously optimizes our products. Webpage content may not reflect the latest updates. For inquiries, please contact [info@arexbio.com](mailto:info@arexbio.com) or your local distributor.

\*Clone Number, Reactivity, Source/Host and Clonality can be found in the product name and Key Features section above.

**DATASHEET****CD18 Rabbit Polyclonal Antibody**

CAT. NO. APA09345

**DATA**

Western blot analysis of CD18 expression in HEK293T (A) whole cell lysates. (Predicted band size: 84 kD; Observed band size: 100 kD)

**STORAGE**

Store at 4°C short term. For long term storage, store at -20°C, avoiding freeze/thaw cycles.

**NOTE**

For Research Use Only. Not for diagnostic, therapeutics, prophylactic or in vivo use.