

DATASHEET

LYL1 Rabbit Polyclonal Antibody

CAT. NO. APA09367

KEY FEATURES

Target	LYL1	Source / Host	Rabbit
Reactivity	Human, Mouse, Rat, Bovine, Chicken, Dog, Pig	Clonality	Polyclonal
Applications	WB, IHC	Conjugation	Unconjugated
Form / Buffer	Liquid in 0.42% Potassium phosphate, 0.87% Sodium chloride, pH 7.3, 30% glycerol, and 0.01% sodium azide.		Storage at-20°C

BACKGROUND

This gene represents a basic helix-loop-helix transcription factor. The encoded protein may play roles in blood vessel maturation and hematopoiesis. A translocation between this locus and the T cell receptor beta locus (GeneID 6957) on chromosome 7 has been associated with acute lymphoblastic leukemia.

APPLICATION

To ensure optimal assay performance, AREX recommends conducting reagent titration tailored to each testing system for optimal detection results.

WB	1:500 - 1:1000
IHC	1:100 - 1:200

*Results are sample-specific. Please refer to your local assay conditions and test parameters for reference.

PRODUCT OVERVIEW

Description	Rabbit polyclonal antibody to LYL1
Specificity	Recognizes endogenous levels of LYL1 protein.
Antibody Type	Primary antibody
Immunogen	KLH-conjugated synthetic peptide encompassing a sequence within the center region of human LYL1. The exact sequence is proprietary.
Purification	The antibody was purified by immunogen affinity chromatography.
Molecular Weight	Predicted: 29 kD; Observed: 34 kD
Form/Buffer	Liquid in 0.42% Potassium phosphate, 0.87% Sodium chloride, pH 7.3, 30% glycerol, and 0.01% sodium azide.
Alternative Names	BHLHA18; Protein lyl-1; Class A basic helix-loop-helix protein 18; bHLHa18; Lymphoblastic leukemia-derived sequence 1
Gene Symbol	LYL1
Entrez Gene	4066(Human); 17095(Mouse); 304663(Rat)
SwissProt	P12980(Human); P27792(Mouse); Q66HH3(Rat)

*AREX continuously optimizes our products. Webpage content may not reflect the latest updates. For inquiries, please contact info@arexbio.com or your local distributor.

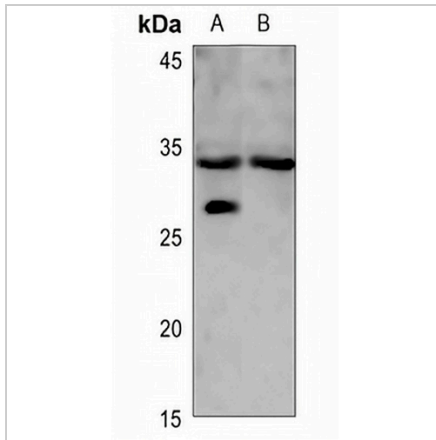
*Clone Number, Reactivity, Source/Host and Clonality can be found in the product name and Key Features section above.

DATASHEET

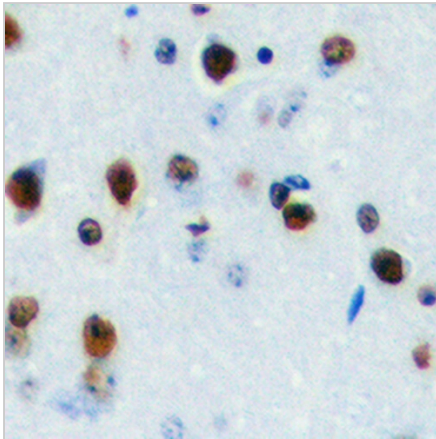
LYL1 Rabbit Polyclonal Antibody

CAT. NO. APA09367

DATA



Western blot analysis of LYL1 expression in mouse muscle (A), rat muscle (B) whole cell lysates. (Predicted band size: 29 kD; Observed band size: 34 kD)



Immunohistochemical analysis of LYL1 staining in human brain formalin fixed paraffin embedded tissue section. The section was pre-treated using heat mediated antigen retrieval with sodium citrate buffer (pH 6.0). The section was then incubated with the antibody at room temperature and detected using an HRP conjugated compact polymer system. DAB was used as the chromogen. The section was then counterstained with haematoxylin and mounted with DPX.

STORAGE

Store at 4°C short term. For long term storage, store at -20°C, avoiding freeze/thaw cycles.

NOTE

For Research Use Only. Not for diagnostic, therapeutics, prophylactic or in vivo use.