

DATASHEET
MEKK1 (Phospho-T1402) Rabbit Polyclonal Antibody
CAT. NO. APA09374
KEY FEATURES

Target	MEKK1 (Phospho-T1402)	Source / Host	Rabbit
Reactivity	Human, Mouse, Rat, Monkey, Pig, Rabbit	Clonality	Polyclonal
Applications	WB, IHC	Conjugation	Unconjugated
Form / Buffer	Liquid in 0.42% Potassium phosphate, 0.87% Sodium chloride, pH 7.3, 30% glycerol, and 0.01% sodium azide.	Storage	at-20°C

BACKGROUND

Component of a protein kinase signal transduction cascade . Activates the ERK and JNK kinase pathways by phosphorylation of MAP2K1 and MAP2K4 . May phosphorylate the MAPK8/JNK1 kinase . Activates CHUK and IKBKB, the central protein kinases of the NF-kappa-B pathway .

APPLICATION

To ensure optimal assay performance, AREX recommends conducting reagent titration tailored to each testing system for optimal detection results.

WB	1:500 - 1:1000
IHC	1:100 - 1:200

*Results are sample-specific. Please refer to your local assay conditions and test parameters for reference.

PRODUCT OVERVIEW

Description	Rabbit polyclonal antibody to MEKK1 (Phospho-T1402)
Specificity	Recognizes endogenous levels of MEKK1 protein only when phosphorylated at T1402.
Antibody Type	Primary antibody
Immunogen	KLH-conjugated synthetic phosphopeptide corresponding to residues surrounding T1402 of human MEKK1 protein. The exact sequence is proprietary.
Purification	The antibody was purified by immunogen affinity chromatography.
Molecular Weight	Predicted: 164 kD; Observed: 195 kD
Form/Buffer	Liquid in 0.42% Potassium phosphate, 0.87% Sodium chloride, pH 7.3, 30% glycerol, and 0.01% sodium azide.
Alternative Names	MAPKKK1; MEKK; MEKK1; Mitogen-activated protein kinase kinase kinase 1; MAPK/ERK kinase kinase 1; MEK kinase 1; MEKK 1
Gene Symbol	MAP3K1
Entrez Gene	4214(Human); 116667(Rat)
SwissProt	Q13233(Human); P53349(Mouse); Q62925(Rat)

*AREX continuously optimizes our products. Webpage content may not reflect the latest updates. For inquiries, please contact info@arexbio.com or your local distributor.

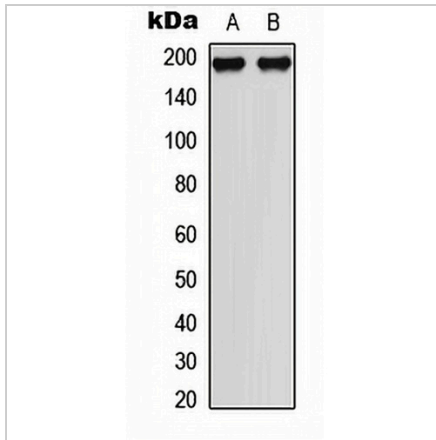
*Clone Number, Reactivity, Source/Host and Clonality can be found in the product name and Key Features section above.

DATASHEET

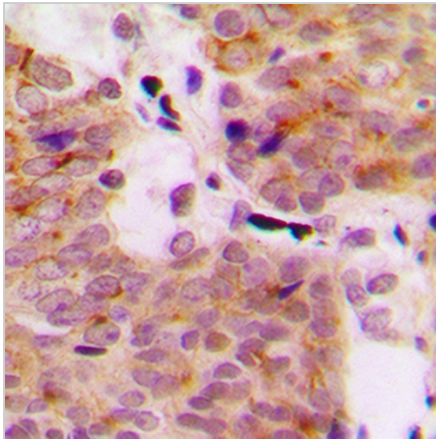
MEKK1 (Phospho-T1402) Rabbit Polyclonal Antibody

CAT. NO. APA09374

DATA



Western blot analysis of MEKK1 (Phospho-T1402) expression in HeLa (A), NIH3T3 (B) whole cell lysates. (Predicted band size: 164 kD; Observed band size: 195 kD)



Immunohistochemical analysis of MEKK1 (Phospho-T1402) staining in human breast cancer formalin fixed paraffin embedded tissue section. The section was pre-treated using heat mediated antigen retrieval with sodium citrate buffer (pH 6.0). The section was then incubated with the antibody at room temperature and detected using an HRP conjugated compact polymer system. DAB was used as the chromogen. The section was then counterstained with haematoxylin and mounted with DPX.

STORAGE

Store at 4°C short term. For long term storage, store at -20°C, avoiding freeze/thaw cycles.

NOTE

For Research Use Only. Not for diagnostic, therapeutics, prophylactic or in vivo use.