

DATASHEET

MBTPS2 Rabbit Polyclonal Antibody

CAT. NO. APA09384

KEY FEATURES

Target	MBTPS2	Source / Host	Rabbit
Reactivity	Human, Mouse, Rat, Bovine	Clonality	Polyclonal
Applications	WB, IF/ICC	Conjugation	Unconjugated
Form / Buffer	Liquid in 0.42% Potassium phosphate, 0.87% Sodium chloride, pH 7.3, 30% glycerol, and 0.01% sodium azide.		Storage at-20°C

BACKGROUND

Zinc metalloprotease that mediates intramembrane proteolysis of proteins such as ATF6, ATF6B, SREBF1/SREBP1 and SREBF2/SREBP2 . Catalyzes the second step in the proteolytic activation of the sterol regulatory element-binding proteins (SREBPs) SREBF1/SREBP1 and SREBF2/SREBP2: cleaves SREBPs within the first transmembrane segment, thereby releasing the N-terminal segment with a portion of the transmembrane segment attached . Mature N-terminal SREBP fragments shuttle to the nucleus and activate gene transcription . Also mediates the second step in the proteolytic activation of the cyclic AMP-dependent transcription factor ATF-6 (ATF6 and ATF6B) . Involved in intramembrane proteolysis during bone formation .

APPLICATION

To ensure optimal assay performance, AREX recommends conducting reagent titration tailored to each testing system for optimal detection results.

WB	1:500 - 1:1000
IF/ICC	1:50 - 1:200

*Results are sample-specific. Please refer to your local assay conditions and test parameters for reference.

PRODUCT OVERVIEW

Description	Rabbit polyclonal antibody to MBTPS2
Specificity	Recognizes endogenous levels of MBTPS2 protein.
Antibody Type	Primary antibody
Immunogen	KLH-conjugated synthetic peptide encompassing a sequence within the center region of human MBTPS2. The exact sequence is proprietary.
Purification	The antibody was purified by immunogen affinity chromatography.
Molecular Weight	Predicted: 57 kD; Observed: 70 kD
Form/Buffer	Liquid in 0.42% Potassium phosphate, 0.87% Sodium chloride, pH 7.3, 30% glycerol, and 0.01% sodium azide.
Alternative Names	S2P; Membrane-bound transcription factor site-2 protease; Endopeptidase S2P; Sterol regulatory element-binding proteins intramembrane protease; SREBPs intramembrane protease
Gene Symbol	MBTPS2
Entrez Gene	51360(Human); 270669(Mouse)
SwissProt	O43462(Human); Q8CHX6(Mouse)

*AREX continuously optimizes our products. Webpage content may not reflect the latest updates. For inquiries, please contact info@arex.bio or your local distributor.

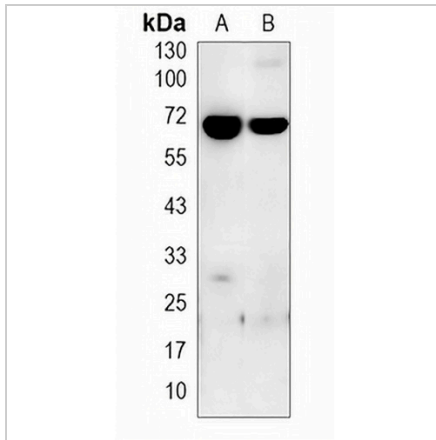
*Clone Number, Reactivity, Source/Host and Clonality can be found in the product name and Key Features section above.

DATASHEET

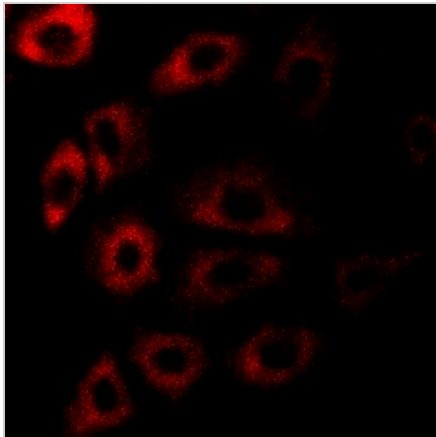
MBTPS2 Rabbit Polyclonal Antibody

CAT. NO. APA09384

DATA



Western blot analysis of MBTPS2 expression in mouse heart (A), rat heart (B) whole cell lysates. (Predicted band size: 57 kD; Observed band size: 70 kD)



Immunofluorescent analysis of MBTPS2 staining in A549 cells. Formalin-fixed cells were permeabilized with 0.1% Triton X-100 in TBS for 5-10 minutes and blocked with 3% BSA-PBS for 30 minutes at room temperature. Cells were probed with the primary antibody in 3% BSA-PBS and incubated overnight at 4 °C in a humidified chamber. Cells were washed with PBST and incubated with a AREX® Fluor 594-conjugated secondary antibody (red) in PBS at room temperature in the dark.

STORAGE

Store at 4°C short term. For long term storage, store at -20°C, avoiding freeze/thaw cycles.

NOTE

For Research Use Only. Not for diagnostic, therapeutics, prophylactic or in vivo use.