

## DATASHEET

# p311 Rabbit Polyclonal Antibody

CAT. NO. APA09429

### KEY FEATURES

Target	p311	Source / Host	Rabbit
Reactivity	Human, Monkey	Clonality	Polyclonal
Applications	IHC	Conjugation	Unconjugated
Form / Buffer	Liquid in 0.42% Potassium phosphate, 0.87% Sodium chloride, pH 7.3, 30% glycerol, and 0.01% sodium azide.		Storage at -20°C

### BACKGROUND

May have roles in neural function. Ectopic expression augments motility of gliomas. Also promotes axonal regeneration . May also have functions in cellular differentiation . Induces differentiation of fibroblast into myofibroblast and myofibroblast ameoid migration. Increases retinoic-acid regulation of lipid-droplet biogenesis . Down-regulates the expression of TGFB1 and TGFB2 but not of TGFB3 . May play a role in the regulation of alveolar generation.

### APPLICATION

To ensure optimal assay performance, AREX recommends conducting reagent titration tailored to each testing system for optimal detection results.

IHC	1:50 - 1:200
-----	--------------

\*Results are sample-specific. Please refer to your local assay conditions and test parameters for reference.

### PRODUCT OVERVIEW

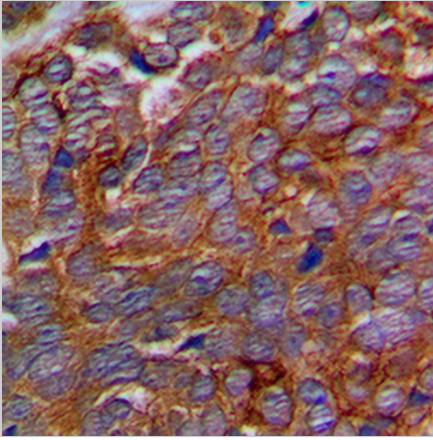
Description	Rabbit polyclonal antibody to p311
Specificity	Recognizes endogenous levels of p311 protein.
Antibody Type	Primary antibody
Immunogen	KLH-conjugated synthetic peptide encompassing a sequence within the center region of human p311. The exact sequence is proprietary.
Purification	The antibody was purified by immunogen affinity chromatography.
Form/Buffer	Liquid in 0.42% Potassium phosphate, 0.87% Sodium chloride, pH 7.3, 30% glycerol, and 0.01% sodium azide.
Alternative Names	C5orf13; P311; Neuronal regeneration-related protein; Neuronal protein 3.1; Protein p311
Gene Symbol	NREP
Entrez Gene	9315(Human); 27528(Mouse); 338475(Rat)
SwissProt	Q16612(Human); Q07475(Mouse); Q80Z34(Rat)

\*AREX continuously optimizes our products. Webpage content may not reflect the latest updates. For inquiries, please contact [info@arexbio.com](mailto:info@arexbio.com) or your local distributor.

\*Clone Number, Reactivity, Source/Host and Clonality can be found in the product name and Key Features section above.

**DATASHEET****p311 Rabbit Polyclonal Antibody**

CAT. NO. APA09429

**DATA**

Immunohistochemical analysis of p311 staining in human prostate cancer formalin fixed paraffin embedded tissue section. The section was pre-treated using heat mediated antigen retrieval with sodium citrate buffer (pH 6.0). The section was then incubated with the antibody at room temperature and detected using an HRP conjugated compact polymer system. DAB was used as the chromogen. The section was then counterstained with haematoxylin and mounted with DPX.

**STORAGE**

Store at 4°C short term. For long term storage, store at -20°C, avoiding freeze/thaw cycles.

**NOTE**

For Research Use Only. Not for diagnostic, therapeutics, prophylactic or in vivo use.