

DATASHEET

Neuropilin 2 Rabbit Polyclonal Antibody

CAT. NO. APA09432

KEY FEATURES

Target	Neuropilin 2	Source / Host	Rabbit
Reactivity	Human, Mouse, Rat, Pig	Clonality	Polyclonal
Applications	WB, IHC	Conjugation	Unconjugated
Form / Buffer	Liquid in 0.42% Potassium phosphate, 0.87% Sodium chloride, pH 7.3, 30% glycerol, and 0.01% sodium azide.		Storage at -20°C

BACKGROUND

High affinity receptor for semaphorins 3C, 3F, VEGF-165 and VEGF-145 isoforms of VEGF, and the PLGF-2 isoform of PGF; (Microbial infection) Acts as a receptor for human cytomegalovirus pentamer-dependent entry in epithelial and endothelial cells.

APPLICATION

To ensure optimal assay performance, AREX recommends conducting reagent titration tailored to each testing system for optimal detection results.

WB	1:500 - 1:1000
IHC	1:50 - 1:100

*Results are sample-specific. Please refer to your local assay conditions and test parameters for reference.

PRODUCT OVERVIEW

Description	Rabbit polyclonal antibody to Neuropilin 2
Specificity	Recognizes endogenous levels of Neuropilin 2 protein.
Antibody Type	Primary antibody
Immunogen	KLH-conjugated synthetic peptide encompassing a sequence within the center region of human Neuropilin 2. The exact sequence is proprietary.
Purification	The antibody was purified by immunogen affinity chromatography.
Molecular Weight	Predicted: 104 kD; Observed: 105 kD
Form/Buffer	Liquid in 0.42% Potassium phosphate, 0.87% Sodium chloride, pH 7.3, 30% glycerol, and 0.01% sodium azide.
Alternative Names	VEGF165R2; Neuropilin-2; Vascular endothelial cell growth factor 165 receptor 2
Gene Symbol	NRP2
Entrez Gene	8828(Human); 18187(Mouse); 81527(Rat)
SwissProt	O60462(Human); O35375(Mouse); O35276(Rat)

*AREX continuously optimizes our products. Webpage content may not reflect the latest updates. For inquiries, please contact info@arexbio.com or your local distributor.

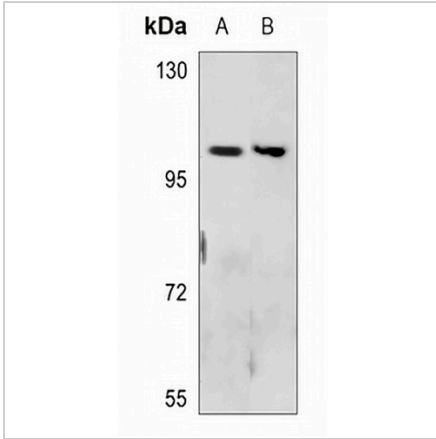
*Clone Number, Reactivity, Source/Host and Clonality can be found in the product name and Key Features section above.

DATASHEET

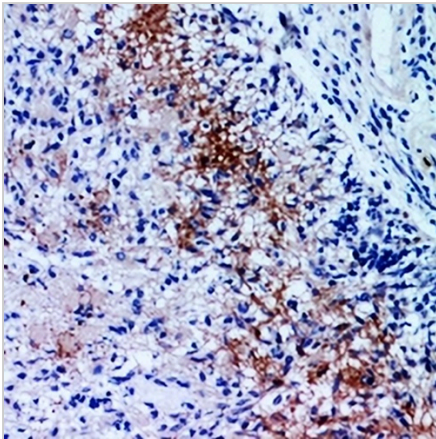
Neuropilin 2 Rabbit Polyclonal Antibody

CAT. NO. APA09432

DATA



Western blot analysis of Neuropilin 2 expression in A375 (A), DLD (B) whole cell lysates. (Predicted band size: 104 kD; Observed band size: 105 kD)



Immunohistochemical analysis of Neuropilin 2 staining in human brain formalin fixed paraffin embedded tissue section. The section was pre-treated using heat mediated antigen retrieval with sodium citrate buffer (pH 6.0). The section was then incubated with the antibody at room temperature and detected using an HRP conjugated compact polymer system. DAB was used as the chromogen. The section was then counterstained with haematoxylin and mounted with DPX.

STORAGE

Store at 4°C short term. For long term storage, store at -20°C, avoiding freeze/thaw cycles.

NOTE

For Research Use Only. Not for diagnostic, therapeutics, prophylactic or in vivo use.