

DATASHEET

PAK1 Rabbit Polyclonal Antibody

CAT. NO. APA09440

KEY FEATURES

| | | | |
|---------------|---|---------------|---------------------|
| Target | PAK1 | Source / Host | Rabbit |
| Reactivity | Human, Mouse, Rat, Bovine | Clonality | Polyclonal |
| Applications | WB | Conjugation | Unconjugated |
| Form / Buffer | Liquid in 0.42% Potassium phosphate, 0.87% Sodium chloride, pH 7.3, 30% glycerol, and 0.01% sodium azide. | | Storage at -20°C |

BACKGROUND

Protein kinase involved in intracellular signaling pathways downstream of integrins and receptor-type kinases that plays an important role in cytoskeleton dynamics, in cell adhesion, migration, proliferation, apoptosis, mitosis, and in vesicle-mediated transport processes . Can directly phosphorylate BAD and protects cells against apoptosis . Activated by interaction with CDC42 and RAC1 . Functions as a GTPase effector that links the Rho-related GTPases CDC42 and RAC1 to the JNK MAP kinase pathway . Phosphorylates and activates MAP2K1, and thereby mediates activation of downstream MAP kinases . Involved in the reorganization of the actin cytoskeleton, actin stress fibers and of focal adhesion complexes .

APPLICATION

To ensure optimal assay performance, AREX recommends conducting reagent titration tailored to each testing system for optimal detection results.

| | |
|----|----------------|
| WB | 1:500 - 1:1000 |
|----|----------------|

*Results are sample-specific. Please refer to your local assay conditions and test parameters for reference.

PRODUCT OVERVIEW

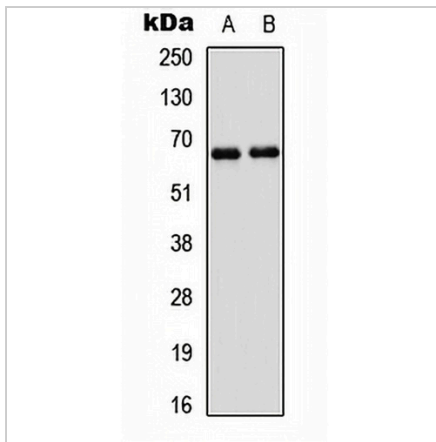
| | |
|-------------------|---|
| Description | Rabbit polyclonal antibody to PAK1 |
| Specificity | Recognizes endogenous levels of PAK1 protein. |
| Antibody Type | Primary antibody |
| Immunogen | KLH-conjugated synthetic peptide encompassing a sequence within the center region of human PAK1. The exact sequence is proprietary. |
| Purification | The antibody was purified by immunogen affinity chromatography. |
| Molecular Weight | Predicted: 60; Observed: 68 kD |
| Form/Buffer | Liquid in 0.42% Potassium phosphate, 0.87% Sodium chloride, pH 7.3, 30% glycerol, and 0.01% sodium azide. |
| Alternative Names | Serine/threonine-protein kinase PAK 1; Alpha-PAK; p21-activated kinase 1; PAK-1; p65-PAK |
| Gene Symbol | PAK1 |
| Entrez Gene | 5058(Human); 29431(Rat) |
| SwissProt | Q13153(Human); O88643(Mouse); P35465(Rat) |

*AREX continuously optimizes our products. Webpage content may not reflect the latest updates. For inquiries, please contact info@arexbio.com or your local distributor.

*Clone Number, Reactivity, Source/Host and Clonality can be found in the product name and Key Features section above.

DATASHEET**PAK1 Rabbit Polyclonal Antibody**

CAT. NO. APA09440

DATA

Western blot analysis of PAK1 expression in A431 (A), HEK293T (B) whole cell lysates. (Predicted band size: 60; 61 kD; Observed band size: 68 kD)

STORAGE

Store at 4°C short term. For long term storage, store at -20°C, avoiding freeze/thaw cycles.

NOTE

For Research Use Only. Not for diagnostic, therapeutics, prophylactic or in vivo use.