

**DATASHEET**

**POTEA Rabbit Polyclonal Antibody**

CAT. NO. APA09459

**KEY FEATURES**

Target	POTEA	Source / Host	Rabbit
Reactivity	Human, Mouse, Rat	Clonality	Polyclonal
Applications	WB, IHC	Conjugation	Unconjugated
Form / Buffer	Liquid in 0.42% Potassium phosphate, 0.87% Sodium chloride, pH 7.3, 30% glycerol, and 0.01% sodium azide.		Storage at -20°C

**BACKGROUND**

POTE ankyrin domain family member A (gene/pseudogene). Also known as: POTE ankyrin domain family member A; ANKRD26-like family A, member 1; POTE ankyrin domain family, member A; cancer/testis antigen family 104, member 3; prostate, ovary, testis-expressed protein on chromosome 8; protein expressed in prostate, ovary, testis, and placenta 8.

**APPLICATION**

To ensure optimal assay performance, AREX recommends conducting reagent titration tailored to each testing system for optimal detection results.

WB	1:500 - 1:1000
IHC	1:100 - 1:200

\*Results are sample-specific. Please refer to your local assay conditions and test parameters for reference.

**PRODUCT OVERVIEW**

Description	Rabbit polyclonal antibody to POTEA
Specificity	Recognizes endogenous levels of POTEA protein.
Antibody Type	Primary antibody
Immunogen	KLH-conjugated synthetic peptide encompassing a sequence within the C-term region of human POTEA. The exact sequence is proprietary.
Purification	The antibody was purified by immunogen affinity chromatography.
Molecular Weight	Predicted: 56 kD; Observed: 50 kD
Form/Buffer	Liquid in 0.42% Potassium phosphate, 0.87% Sodium chloride, pH 7.3, 30% glycerol, and 0.01% sodium azide.
Alternative Names	A26A1; POTE8; POTE ankyrin domain family member A; ANKRD26-like family A member 1; Prostate, ovary, testis-expressed protein on chromosome 8; POTE-8
Gene Symbol	POTEA
Entrez Gene	340441(Human)
SwissProt	Q6S8J7(Human)

\*AREX continuously optimizes our products. Webpage content may not reflect the latest updates. For inquiries, please contact [info@arexbio.com](mailto:info@arexbio.com) or your local distributor.

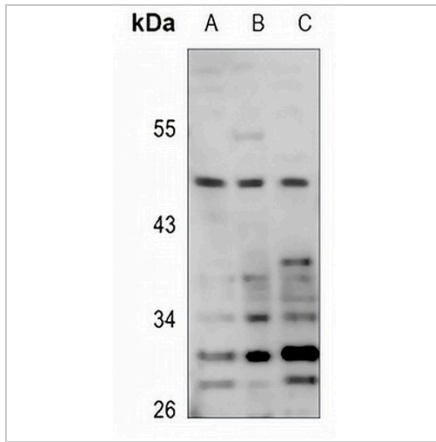
\*Clone Number, Reactivity, Source/Host and Clonality can be found in the product name and Key Features section above.

**DATASHEET**

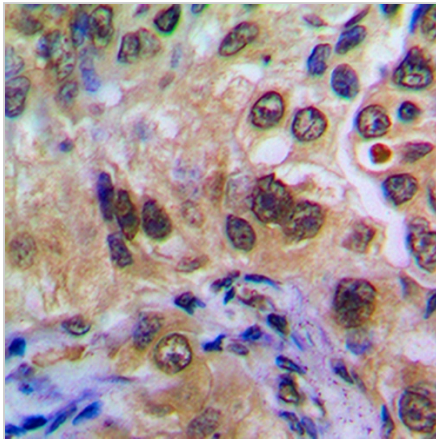
**POTEA Rabbit Polyclonal Antibody**

CAT. NO. APA09459

**DATA**



Western blot analysis of POTEA expression in HEK293T (A), HepG2 (B), MCF7 (C) whole cell lysates. (Predicted band size: 56 kD; Observed band size: 50 kD)



Immunohistochemical analysis of POTEA staining in human breast cancer formalin fixed paraffin embedded tissue section. The section was pre-treated using heat mediated antigen retrieval with sodium citrate buffer (pH 6.0). The section was then incubated with the antibody at room temperature and detected using an HRP conjugated compact polymer system. DAB was used as the chromogen. The section was then counterstained with haematoxylin and mounted with DPX.

**STORAGE**

Store at 4°C short term. For long term storage, store at -20°C, avoiding freeze/thaw cycles.

**NOTE**

For Research Use Only. Not for diagnostic, therapeutics, prophylactic or in vivo use.