

DATASHEET

DARPP32 (Phospho-T75) Rabbit Polyclonal Antibody

CAT. NO. APA09460

KEY FEATURES

Target	DARPP32 (Phospho-T75)	Source / Host	Rabbit	
Reactivity	Human, Mouse, Rat, Pig	Clonality	Polyclonal	
Applications	WB, IHC, IF/ICC	Conjugation	Unconjugated	
Form / Buffer	Liquid in 0.42% Potassium phosphate, 0.87% Sodium chloride, pH 7.3, 30% glycerol, and 0.01% sodium azide.		Storage	at-20°C

BACKGROUND

Inhibitor of protein-phosphatase 1.

APPLICATION

To ensure optimal assay performance, AREX recommends conducting reagent titration tailored to each testing system for optimal detection results.

WB	1:500 - 1:1000
IHC	1:100 - 1:200
IF/ICC	1:50 - 1:200

*Results are sample-specific. Please refer to your local assay conditions and test parameters for reference.

PRODUCT OVERVIEW

Description	Rabbit polyclonal antibody to DARPP32 (Phospho-T75)
Specificity	Recognizes endogenous levels of DARPP32 protein only when phosphorylated at T75.
Antibody Type	Primary antibody
Immunogen	KLH-conjugated synthetic phosphopeptide corresponding to residues surrounding T75 of human DARPP32 protein. The exact sequence is proprietary.
Purification	The antibody was purified by immunogen affinity chromatography.
Molecular Weight	Predicted: 22 kD; Observed: 23 kD
Form/Buffer	Liquid in 0.42% Potassium phosphate, 0.87% Sodium chloride, pH 7.3, 30% glycerol, and 0.01% sodium azide.
Alternative Names	DARPP32; Protein phosphatase 1 regulatory subunit 1B; DARPP-32; Dopamine- and cAMP-regulated neuronal phosphoprotein
Gene Symbol	PPP1R1B
Entrez Gene	84152(Human); 19049(Mouse); 360616(Rat)
SwissProt	Q9UD71(Human); Q60829(Mouse); Q6J4I0(Rat)

*AREX continuously optimizes our products. Webpage content may not reflect the latest updates. For inquiries, please contact info@arexbio.com or your local distributor.

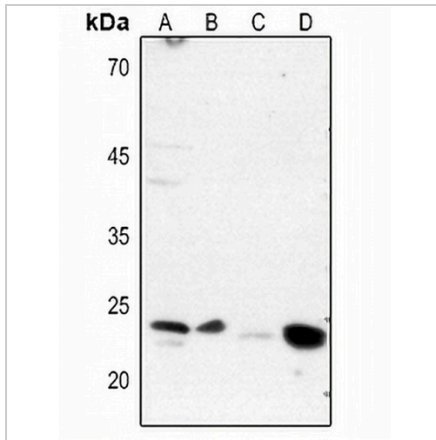
*Clone Number, Reactivity, Source/Host and Clonality can be found in the product name and Key Features section above.

DATASHEET

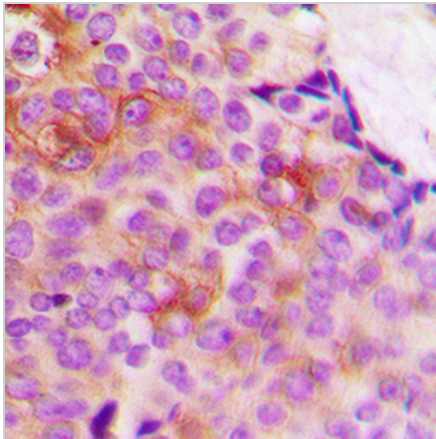
DARPP32 (Phospho-T75) Rabbit Polyclonal Antibody

CAT. NO. APA09460

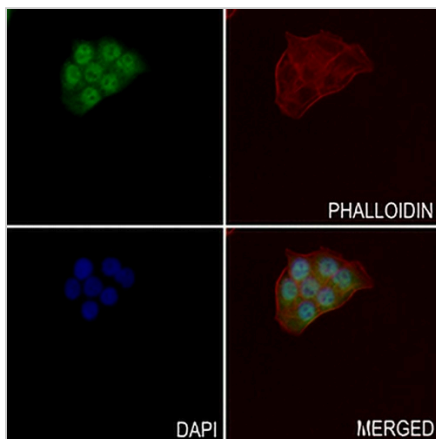
DATA



Western blot analysis of DARPP32 (Phospho-T75) expression in mouse lung (A), mouse liver (B), rat lung (C), rat liver (D) whole cell lysates. (Predicted band size: 22 kD; Observed band size: 23 kD)



Immunohistochemical analysis of DARPP32 (Phospho-T75) staining in human breast cancer formalin fixed paraffin embedded tissue section. The section was pre-treated using heat mediated antigen retrieval with sodium citrate buffer (pH 6.0). The section was then incubated with the antibody at room temperature and detected using an HRP conjugated compact polymer system. DAB was used as the chromogen. The section was then counterstained with haematoxylin and mounted with DPX.



Immunofluorescent analysis of DARPP32 (Phospho-T75) staining in HIOEC cells. Formalin-fixed cells were permeabilized with 0.1% Triton X-100 in TBS for 5-10 minutes and blocked with 3% BSA-PBS for 30 minutes at room temperature. Cells were probed with the primary antibody in 3% BSA-PBS and incubated overnight at 4 °C in a humidified chamber. Cells were washed with PBST and incubated with a AREX® Fluor 488 - conjugated secondary antibody (green) in PBS at room temperature in the dark. Phalloidin - AREX® Fluor 594 was used to stain Actin filaments (red). DAPI was used to stain the cell nuclei (blue).

STORAGE

Store at 4°C short term. For long term storage, store at -20°C, avoiding freeze/thaw cycles.

NOTE

For Research Use Only. Not for diagnostic, therapeutics, prophylactic or in vivo use.