

**DATASHEET**
**PKC beta Rabbit Polyclonal Antibody**
**CAT. NO. APA09464**
**KEY FEATURES**

|               |   |               |                     |
|---------------|---|---------------|---------------------|
| Target        | PKC beta  | Source / Host | Rabbit              |
| Reactivity    | Human, Mouse, Rat, Bovine, Monkey, Pig, Rabbit  | Clonality     | Polyclonal          |
| Applications  | WB  | Conjugation   | Unconjugated        |
| Form / Buffer | Liquid in 0.42% Potassium phosphate, 0.87% Sodium chloride, pH 7.3, 30% glycerol, and 0.01% sodium azide. |               | Storage<br>at -20°C |

**BACKGROUND**

Calcium-activated, phospholipid- and diacylglycerol (DAG)-dependent serine/threonine-protein kinase involved in various cellular processes such as regulation of the B-cell receptor (BCR) signalosome, oxidative stress-induced apoptosis, androgen receptor-dependent transcription regulation, insulin signaling and endothelial cells proliferation. Plays a key role in B-cell activation by regulating BCR-induced NF-kappa-B activation. Mediates the activation of the canonical NF-kappa-B pathway (NFkB1) by direct phosphorylation of CARD11/CARMA1 at 'Ser-559', 'Ser-644' and 'Ser-652'.

**APPLICATION**

To ensure optimal assay performance, AREX recommends conducting reagent titration tailored to each testing system for optimal detection results.

|    |                |
|----|----------------|
| WB | 1:500 - 1:1000 |
|----|----------------|

\*Results are sample-specific. Please refer to your local assay conditions and test parameters for reference.

**PRODUCT OVERVIEW**

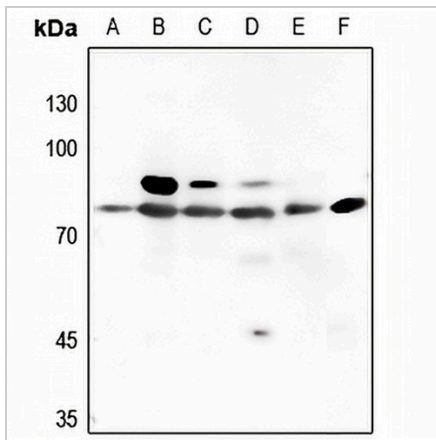
|                   |   |
|-------------------|---|
| Description       | Rabbit polyclonal antibody to PKC beta  |
| Specificity       | Recognizes endogenous levels of PKC beta protein.   |
| Antibody Type     | Primary antibody  |
| Immunogen         | KLH-conjugated synthetic peptide encompassing a sequence within the C-term region of human PKC beta. The exact sequence is proprietary. |
| Purification      | The antibody was purified by immunogen affinity chromatography.   |
| Molecular Weight  | Predicted: 76 kD; Observed: 77; 80 kD   |
| Form/Buffer       | Liquid in 0.42% Potassium phosphate, 0.87% Sodium chloride, pH 7.3, 30% glycerol, and 0.01% sodium azide.                               |
| Alternative Names | PKCB; PRKCB1; Protein kinase C beta type; PKC-B; PKC-beta   |
| Gene Symbol       | PRKCB   |
| Entrez Gene       | 5579(Human); 18751(Mouse); 25023(Rat)   |
| SwissProt         | P05771(Human); P68404(Mouse); P68403(Rat)   |

\*AREX continuously optimizes our products. Webpage content may not reflect the latest updates. For inquiries, please contact [info@arexbio.com](mailto:info@arexbio.com) or your local distributor.

\*Clone Number, Reactivity, Source/Host and Clonality can be found in the product name and Key Features section above.

**DATASHEET****PKC beta Rabbit Polyclonal Antibody**

CAT. NO. APA09464

**DATA**

Western blot analysis of PKC beta expression in HEK293T (A), HeLa (B), H1688 (C), mouse lung (D), mouse spleen (E), rat lung (F) whole cell lysates. (Predicted band size: 76 kDa; Observed band size: 77; 80 kDa)

**STORAGE**

Store at 4°C short term. For long term storage, store at -20°C, avoiding freeze/thaw cycles.

**NOTE**

For Research Use Only. Not for diagnostic, therapeutics, prophylactic or in vivo use.