

**DATASHEET**

**PTHR1 Rabbit Polyclonal Antibody**

CAT. NO. APA09470

**KEY FEATURES**

Target	PTHR1	Source / Host	Rabbit
Reactivity	Human, Mouse, Rat, Bovine, Dog, Pig	Clonality	Polyclonal
Applications	WB, IHC, IF/ICC	Conjugation	Unconjugated
Form / Buffer	Liquid in 0.42% Potassium phosphate, 0.87% Sodium chloride, pH 7.3, 30% glycerol, and 0.01% sodium azide.	Storage	at-20°C

**BACKGROUND**

G-protein-coupled receptor for parathyroid hormone (PTH) and for parathyroid hormone-related peptide (PTHrP) and for parathyroid hormone-related peptide (PTHrP). Ligand binding causes a conformation change that triggers signaling via guanine nucleotide-binding proteins (G proteins) and modulates the activity of downstream effectors, such as adenylate cyclase (cAMP). PTHR1 is coupled to G(s) G alpha proteins and mediates activation of adenylate cyclase activity. PTHrP dissociates from PTHR1 more rapidly than PTH; as consequence, the cAMP response induced by PTHrP decays faster than the response induced by PTH.

**APPLICATION**

To ensure optimal assay performance, AREX recommends conducting reagent titration tailored to each testing system for optimal detection results.

WB	1:500 - 1:1000
IHC	1:100 - 1:200
IF/ICC	1:100 - 1:500

\*Results are sample-specific. Please refer to your local assay conditions and test parameters for reference.

**PRODUCT OVERVIEW**

Description	Rabbit polyclonal antibody to PTHR1
Specificity	Recognizes endogenous levels of PTHR1 protein.
Antibody Type	Primary antibody
Immunogen	KLH-conjugated synthetic peptide encompassing a sequence within the center region of human PTHR1. The exact sequence is proprietary.
Purification	The antibody was purified by immunogen affinity chromatography.
Molecular Weight	Predicted: 66 kD; Observed: 53 kD
Form/Buffer	Liquid in 0.42% Potassium phosphate, 0.87% Sodium chloride, pH 7.3, 30% glycerol, and 0.01% sodium azide.
Alternative Names	PTHR; PTHR1; Parathyroid hormone/parathyroid hormone-related peptide receptor; PTH/PTHrP type I receptor; PTH/PTHr receptor; Parathyroid hormone 1 receptor; PTH1 receptor
Gene Symbol	PTH1R
Entrez Gene	5745(Human)
SwissProt	Q03431(Human)

\*AREX continuously optimizes our products. Webpage content may not reflect the latest updates. For inquiries, please contact [info@arexbio.com](mailto:info@arexbio.com) or your local distributor.

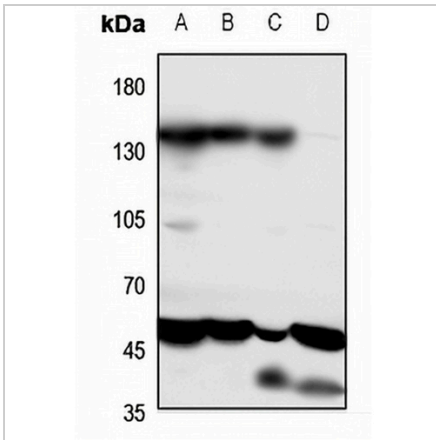
\*Clone Number, Reactivity, Source/Host and Clonality can be found in the product name and Key Features section above.

**DATASHEET**

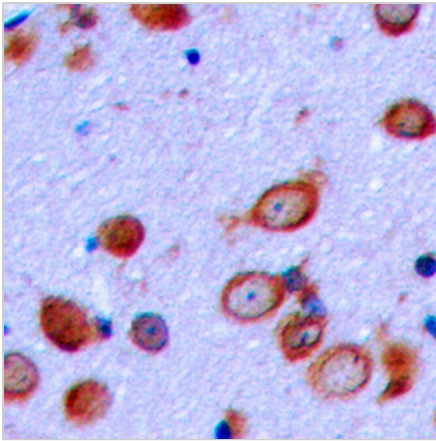
**PTHR1 Rabbit Polyclonal Antibody**

CAT. NO. APA09470

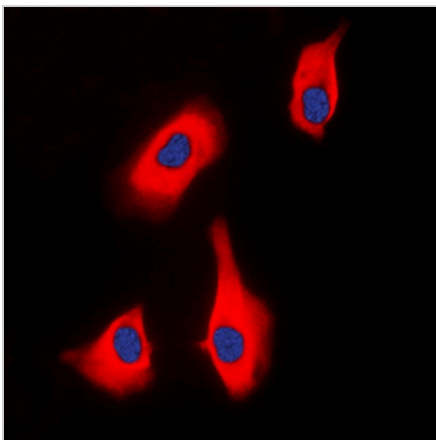
**DATA**



Western blot analysis of PTHR1 expression in mouse lung (A), mouse kidney (B), rat lung (C), rat kidney (D) whole cell lysates. (Predicted band size: 66 kD; Observed band size: 53 kD)



Immunohistochemical analysis of PTHR1 staining in human brain formalin fixed paraffin embedded tissue section. The section was pre-treated using heat mediated antigen retrieval with sodium citrate buffer (pH 6.0). The section was then incubated with the antibody at room temperature and detected using an HRP conjugated compact polymer system. DAB was used as the chromogen. The section was then counterstained with haematoxylin and mounted with DPX.



Immunofluorescent analysis of PTHR1 staining in HEK293T cells. Formalin-fixed cells were permeabilized with 0.1% Triton X-100 in TBS for 5-10 minutes and blocked with 3% BSA-PBS for 30 minutes at room temperature. Cells were probed with the primary antibody in 3% BSA-PBS and incubated overnight at 4 °C in a humidified chamber. Cells were washed with PBST and incubated with a DyLight 594-conjugated secondary antibody (red) in PBS at room temperature in the dark. DAPI was used to stain the cell nuclei (blue).

**STORAGE**

Store at 4°C short term. For long term storage, store at -20°C, avoiding freeze/thaw cycles.

**NOTE**

For Research Use Only. Not for diagnostic, therapeutics, prophylactic or in vivo use.