

DATASHEET

R3HCC1L Rabbit Polyclonal Antibody

CAT. NO. APA09479

KEY FEATURES

Target	R3HCC1L	Source / Host	Rabbit
Reactivity	Human, Mouse	Clonality	Polyclonal
Applications	WB, IHC	Conjugation	Unconjugated
Form / Buffer	Liquid in 0.42% Potassium phosphate, 0.87% Sodium chloride, pH 7.3, 30% glycerol, and 0.01% sodium azide.		Storage at -20°C

BACKGROUND

Coiled-coil domain-containing protein R3HCC1L (R3HCC1L), also known as Growth inhibition and differentiation-related protein 88, Putative mitochondrial space protein 32.1, R3H and coiled-coil domain-containing protein 1-like. Subunit: May interact with the exon junction complex (EJC) composed at least of CASC3, EIF4A3, MAGOH and RBM8A Tissue specificity: Expressed in placenta

APPLICATION

To ensure optimal assay performance, AREX recommends conducting reagent titration tailored to each testing system for optimal detection results.

WB	1:500 - 1:1000
IHC	1:100 - 1:200

*Results are sample-specific. Please refer to your local assay conditions and test parameters for reference.

PRODUCT OVERVIEW

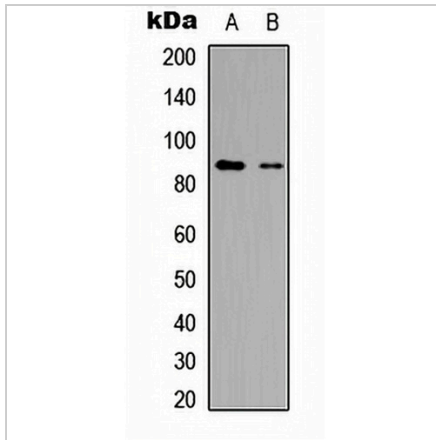
Description	Rabbit polyclonal antibody to R3HCC1L
Specificity	Recognizes endogenous levels of R3HCC1L protein.
Antibody Type	Primary antibody
Immunogen	KLH-conjugated synthetic peptide encompassing a sequence within the C-term region of human R3HCC1L. The exact sequence is proprietary.
Purification	The antibody was purified by immunogen affinity chromatography.
Molecular Weight	Predicted: 87 kD; Observed: 88 kD
Form/Buffer	Liquid in 0.42% Potassium phosphate, 0.87% Sodium chloride, pH 7.3, 30% glycerol, and 0.01% sodium azide.
Alternative Names	C10orf28; GIDRP88; Coiled-coil domain-containing protein R3HCC1L; Growth inhibition and differentiation-related protein 88; Putative mitochondrial space protein 32.1; R3H and coiled-coil domain-containing protein 1-like
Gene Symbol	R3HCC1L
Entrez Gene	27291(Human); 52013(Mouse)
SwissProt	Q7Z5L2(Human); Q8BJM3(Mouse)

*AREX continuously optimizes our products. Webpage content may not reflect the latest updates. For inquiries, please contact info@arexbio.com or your local distributor.

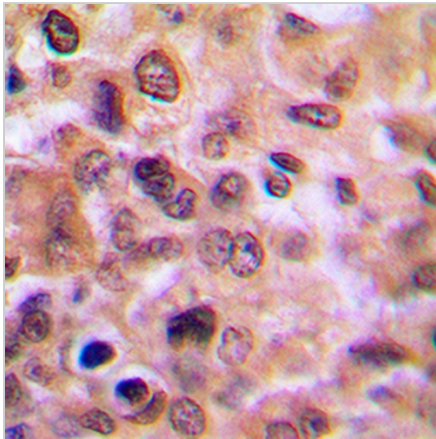
*Clone Number, Reactivity, Source/Host and Clonality can be found in the product name and Key Features section above.

DATASHEET**R3HCC1L Rabbit Polyclonal Antibody**

CAT. NO. APA09479

DATA

Western blot analysis of R3HCC1L expression in HepG2 (A), Jurkat (B) whole cell lysates. (Predicted band size: 87 kD; Observed band size: 88 kD)



Immunohistochemical analysis of R3HCC1L staining in human breast cancer formalin fixed paraffin embedded tissue section. The section was pre-treated using heat mediated antigen retrieval with sodium citrate buffer (pH 6.0). The section was then incubated with the antibody at room temperature and detected using an HRP conjugated compact polymer system. DAB was used as the chromogen. The section was then counterstained with haematoxylin and mounted with DPX.

STORAGE

Store at 4°C short term. For long term storage, store at -20°C, avoiding freeze/thaw cycles.

NOTE

For Research Use Only. Not for diagnostic, therapeutics, prophylactic or in vivo use.