

DATASHEET

RAMP1 Rabbit Polyclonal Antibody

CAT. NO. APA09484

KEY FEATURES

Target	RAMP1	Source / Host	Rabbit
Reactivity	Human, Mouse, Rat	Clonality	Polyclonal
Applications	WB	Conjugation	Unconjugated
Form / Buffer	Liquid in 0.42% Potassium phosphate, 0.87% Sodium chloride, pH 7.3, 30% glycerol, and 0.01% sodium azide.		Storage at -20°C

BACKGROUND

Accessory protein that interacts with and modulates the function of G-protein coupled receptors including calcitonin gene-related peptide type 1 receptor (CALCRL) and calcitonin receptor (CALCR) and calcitonin receptor (CALCR) . Required for the transport of CALCRL to the plasma membrane . Together with CALCRL, form the receptor complex for the calcitonin gene-related peptides CGRP1/CALCA and CGRP2/CALCB . Together with CALCR, form the AMYR1 receptor complex for amylin/IAPP and CGRP1/CALCA .

APPLICATION

To ensure optimal assay performance, AREX recommends conducting reagent titration tailored to each testing system for optimal detection results.

WB	1:500 - 1:1000
----	----------------

*Results are sample-specific. Please refer to your local assay conditions and test parameters for reference.

PRODUCT OVERVIEW

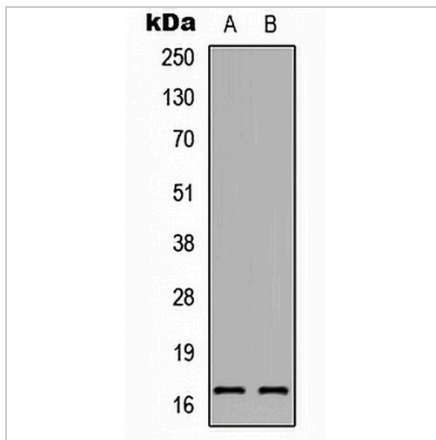
Description	Rabbit polyclonal antibody to RAMP1
Specificity	Recognizes endogenous levels of RAMP1 protein.
Antibody Type	Primary antibody
Immunogen	KLH-conjugated synthetic peptide encompassing a sequence within the center region of human RAMP1. The exact sequence is proprietary.
Purification	The antibody was purified by immunogen affinity chromatography.
Molecular Weight	Predicted: 16 kD; Observed: 17 kD
Form/Buffer	Liquid in 0.42% Potassium phosphate, 0.87% Sodium chloride, pH 7.3, 30% glycerol, and 0.01% sodium azide.
Alternative Names	Receptor activity-modifying protein 1; Calcitonin-receptor-like receptor activity-modifying protein 1; CRLR activity-modifying protein 1
Gene Symbol	RAMP1
Entrez Gene	10267(Human); 51801(Mouse); 58965(Rat)
SwissProt	O60894(Human); Q9WTJ5(Mouse); Q9JJ74(Rat)

*AREX continuously optimizes our products. Webpage content may not reflect the latest updates. For inquiries, please contact info@arexbio.com or your local distributor.

*Clone Number, Reactivity, Source/Host and Clonality can be found in the product name and Key Features section above.

DATASHEET**RAMP1 Rabbit Polyclonal Antibody**

CAT. NO. APA09484

DATA

Western blot analysis of RAMP1 expression in HeLa (A), NIH3T3 (B), H9C2 (C) whole cell lysates. (Predicted band size: 16 kD; Observed band size: 17 kD)

STORAGE

Store at 4°C short term. For long term storage, store at -20°C, avoiding freeze/thaw cycles.

NOTE

For Research Use Only. Not for diagnostic, therapeutics, prophylactic or in vivo use.