

DATASHEET

RNF138 Rabbit Polyclonal Antibody

CAT. NO. APA09496

KEY FEATURES

Target	RNF138	Source / Host	Rabbit
Reactivity	Human, Mouse, Rat, Monkey	Clonality	Polyclonal
Applications	WB	Conjugation	Unconjugated
Form / Buffer	Liquid in 0.42% Potassium phosphate, 0.87% Sodium chloride, pH 7.3, 30% glycerol, and 0.01% sodium azide.		Storage at -20°C

BACKGROUND

E3 ubiquitin-protein ligase involved in DNA damage response by promoting DNA resection and homologous recombination . Recruited to sites of double-strand breaks following DNA damage and specifically promotes double-strand break repair via homologous recombination . Two different, non-exclusive, mechanisms have been proposed. According to a report, regulates the choice of double-strand break repair by favoring homologous recombination over non-homologous end joining (NHEJ): acts by mediating ubiquitination of XRCC5/Ku80, leading to remove the Ku complex from DNA breaks, thereby promoting homologous recombination .

APPLICATION

To ensure optimal assay performance, AREX recommends conducting reagent titration tailored to each testing system for optimal detection results.

WB	1:500 - 1:1000
----	----------------

*Results are sample-specific. Please refer to your local assay conditions and test parameters for reference.

PRODUCT OVERVIEW

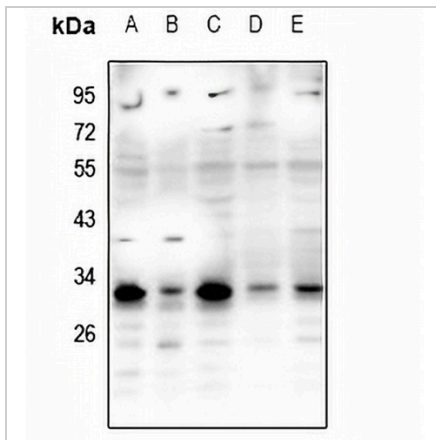
Description	Rabbit polyclonal antibody to RNF138
Specificity	Recognizes endogenous levels of RNF138 protein.
Antibody Type	Primary antibody
Immunogen	KLH-conjugated synthetic peptide encompassing a sequence within the center region of human RNF138. The exact sequence is proprietary.
Purification	The antibody was purified by immunogen affinity chromatography.
Molecular Weight	Predicted: 28 kD; Observed: 28 kD
Form/Buffer	Liquid in 0.42% Potassium phosphate, 0.87% Sodium chloride, pH 7.3, 30% glycerol, and 0.01% sodium azide.
Alternative Names	NARF; E3 ubiquitin-protein ligase RNF138; Nemo-like kinase-associated RING finger protein; NLK-associated RING finger protein; hNARF; RING finger protein 138
Gene Symbol	RNF138
Entrez Gene	51444(Human); 56515(Mouse); 94196(Rat)
SwissProt	Q8WVD3(Human); Q9CQE0(Mouse); Q99PD2(Rat)

*AREX continuously optimizes our products. Webpage content may not reflect the latest updates. For inquiries, please contact info@arexbio.com or your local distributor.

*Clone Number, Reactivity, Source/Host and Clonality can be found in the product name and Key Features section above.

DATASHEET**RNF138 Rabbit Polyclonal Antibody**

CAT. NO. APA09496

DATA

Western blot analysis of RNF138 expression in CT26 (A), PC12 (B), COS7 (C), MCF7 (D), A549 (E) whole cell lysates. (Predicted band size: 28 kD; Observed band size: 28 kD)

STORAGE

Store at 4°C short term. For long term storage, store at -20°C, avoiding freeze/thaw cycles.

NOTE

For Research Use Only. Not for diagnostic, therapeutics, prophylactic or in vivo use.