

DATASHEET

RPL37 Rabbit Polyclonal Antibody

CAT. NO. APA09501

KEY FEATURES

Target	RPL37	Source / Host	Rabbit
Reactivity	Human, Mouse, Rat, Bovine	Clonality	Polyclonal
Applications	WB	Conjugation	Unconjugated
Form / Buffer	Liquid in 0.42% Potassium phosphate, 0.87% Sodium chloride, pH 7.3, 30% glycerol, and 0.01% sodium azide.		Storage at -20°C

BACKGROUND

Component of the large ribosomal subunit . The ribosome is a large ribonucleoprotein complex responsible for the synthesis of proteins in the cell .

APPLICATION

To ensure optimal assay performance, AREX recommends conducting reagent titration tailored to each testing system for optimal detection results.

WB	1:500 - 1:1000
----	----------------

*Results are sample-specific. Please refer to your local assay conditions and test parameters for reference.

PRODUCT OVERVIEW

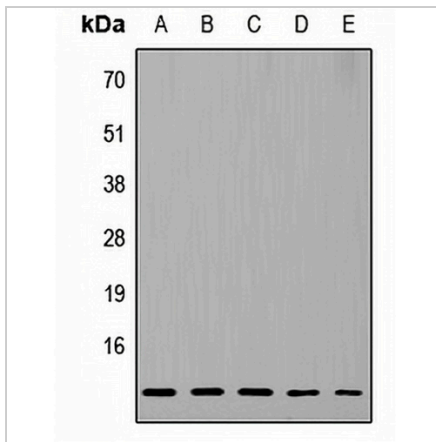
Description	Rabbit polyclonal antibody to RPL37
Specificity	Recognizes endogenous levels of RPL37 protein.
Antibody Type	Primary antibody
Immunogen	KLH-conjugated synthetic peptide encompassing a sequence within the center region of human RPL37. The exact sequence is proprietary.
Purification	The antibody was purified by immunogen affinity chromatography.
Molecular Weight	Predicted: 11 kD; Observed: 11 kD
Form/Buffer	Liquid in 0.42% Potassium phosphate, 0.87% Sodium chloride, pH 7.3, 30% glycerol, and 0.01% sodium azide.
Alternative Names	60S ribosomal protein L37; G1.16
Gene Symbol	RPL37
Entrez Gene	6167(Human); 100502825; 67281(Mouse); 100360781; 100360841; 81770(Rat)
SwissProt	P61927(Human); Q9D823(Mouse); P61928(Rat)

*AREX continuously optimizes our products. Webpage content may not reflect the latest updates. For inquiries, please contact info@arexbio.com or your local distributor.

*Clone Number, Reactivity, Source/Host and Clonality can be found in the product name and Key Features section above.

DATASHEET**RPL37 Rabbit Polyclonal Antibody**

CAT. NO. APA09501

DATA

Western blot analysis of RPL37 expression in HeLa (A), MCF7 (B), Raw264.7 (C), PC12 (D), H9C2 (E) whole cell lysates. (Predicted band size: 11 kD; Observed band size: 11 kD)

STORAGE

Store at 4°C short term. For long term storage, store at -20°C, avoiding freeze/thaw cycles.

NOTE

For Research Use Only. Not for diagnostic, therapeutics, prophylactic or in vivo use.