

DATASHEET

RPL7 Rabbit Polyclonal Antibody

CAT. NO. APA09504

KEY FEATURES

| | | | |
|---------------|---|---------------|--------------------|
| Target | RPL7 | Source / Host | Rabbit |
| Reactivity | Human, Mouse, Rat, Bovine, Chicken, Monkey, Pig | Clonality | Polyclonal |
| Applications | WB, IHC | Conjugation | Unconjugated |
| Form / Buffer | Liquid in 0.42% Potassium phosphate, 0.87% Sodium chloride, pH 7.3, 30% glycerol, and 0.01% sodium azide. | | Storage at-20°C |

BACKGROUND

Component of the large ribosomal subunit . The ribosome is a large ribonucleoprotein complex responsible for the synthesis of proteins in the cell . Binds to G-rich structures in 28S rRNA and in mRNAs . Plays a regulatory role in the translation apparatus; inhibits cell-free translation of mRNAs .

APPLICATION

To ensure optimal assay performance, AREX recommends conducting reagent titration tailored to each testing system for optimal detection results.

| | |
|-----|----------------|
| WB | 1:500 - 1:1000 |
| IHC | 1:100 - 1:200 |

*Results are sample-specific. Please refer to your local assay conditions and test parameters for reference.

PRODUCT OVERVIEW

| | |
|-------------------|---|
| Description | Rabbit polyclonal antibody to RPL7 |
| Specificity | Recognizes endogenous levels of RPL7 protein. |
| Antibody Type | Primary antibody |
| Immunogen | KLH-conjugated synthetic peptide encompassing a sequence within the C-term region of human RPL7. The exact sequence is proprietary. |
| Purification | The antibody was purified by immunogen affinity chromatography. |
| Molecular Weight | Predicted: 29 kD; Observed: 29 kD |
| Form/Buffer | Liquid in 0.42% Potassium phosphate, 0.87% Sodium chloride, pH 7.3, 30% glycerol, and 0.01% sodium azide. |
| Alternative Names | 60S ribosomal protein L7 |
| Gene Symbol | RPL7 |
| Entrez Gene | 6129(Human); 19989(Mouse) |
| SwissProt | P18124(Human); P14148(Mouse); P05426(Rat) |

*AREX continuously optimizes our products. Webpage content may not reflect the latest updates. For inquiries, please contact info@arexbio.com or your local distributor.

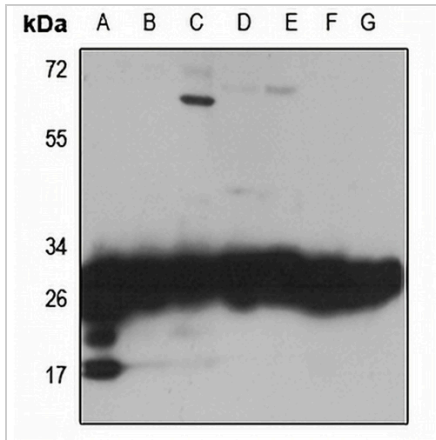
*Clone Number, Reactivity, Source/Host and Clonality can be found in the product name and Key Features section above.

DATASHEET

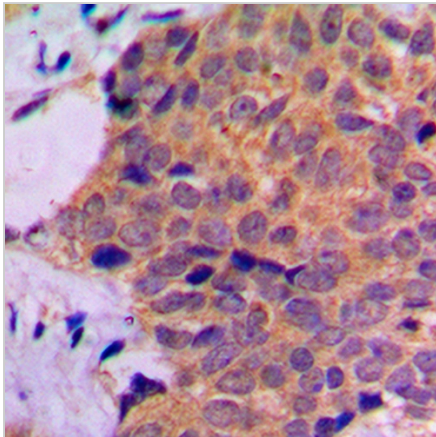
RPL7 Rabbit Polyclonal Antibody

CAT. NO. APA09504

DATA



Western blot analysis of RPL7 expression in HEK293T (A), HeLa (B), HCG27 (C), mouse liver (D), mouse kidney (E), rat liver (F), rat kidney (G) whole cell lysates. (Predicted band size: 29 kD; Observed band size: 29 kD)



Immunohistochemical analysis of RPL7 staining in human prostate cancer formalin fixed paraffin embedded tissue section. The section was pre-treated using heat mediated antigen retrieval with sodium citrate buffer (pH 6.0). The section was then incubated with the antibody at room temperature and detected using an HRP conjugated compact polymer system. DAB was used as the chromogen. The section was then counterstained with haematoxylin and mounted with DPX.

STORAGE

Store at 4°C short term. For long term storage, store at -20°C, avoiding freeze/thaw cycles.

NOTE

For Research Use Only. Not for diagnostic, therapeutics, prophylactic or in vivo use.