

DATASHEET

MCT4 Rabbit Polyclonal Antibody

CAT. NO. APA09523

KEY FEATURES

Target	MCT4	Source / Host	Rabbit
Reactivity	Human, Mouse, Rat, Pig	Clonality	Polyclonal
Applications	WB	Conjugation	Unconjugated
Form / Buffer	Liquid in 0.42% Potassium phosphate, 0.87% Sodium chloride, pH 7.3, 30% glycerol, and 0.01% sodium azide.		Storage at -20°C

BACKGROUND

Proton-dependent transporter of monocarboxylates such as L-lactate and pyruvate . Plays a predominant role in L-lactate efflux from highly glycolytic cells .

APPLICATION

To ensure optimal assay performance, AREX recommends conducting reagent titration tailored to each testing system for optimal detection results.

WB	1:500 - 1:1000
----	----------------

*Results are sample-specific. Please refer to your local assay conditions and test parameters for reference.

PRODUCT OVERVIEW

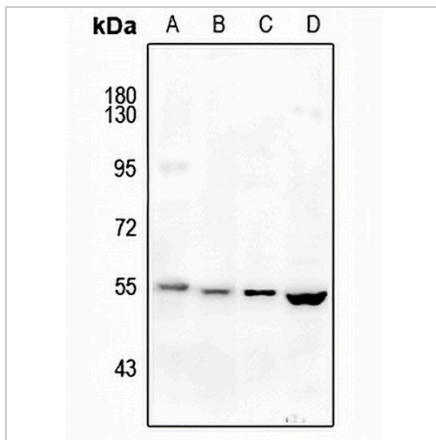
Description	Rabbit polyclonal antibody to MCT4
Specificity	Recognizes endogenous levels of MCT4 protein.
Antibody Type	Primary antibody
Immunogen	KLH-conjugated synthetic peptide encompassing a sequence within the center region of human MCT4. The exact sequence is proprietary.
Purification	The antibody was purified by immunogen affinity chromatography.
Molecular Weight	Predicted: 49 kD; Observed: 50 kD
Form/Buffer	Liquid in 0.42% Potassium phosphate, 0.87% Sodium chloride, pH 7.3, 30% glycerol, and 0.01% sodium azide.
Alternative Names	MCT4; Monocarboxylate transporter 4; MCT 4; Solute carrier family 16 member 3
Gene Symbol	SLC16A3
Entrez Gene	9123(Human); 80879(Mouse); 80878(Rat)
SwissProt	O15427(Human); P57787(Mouse); O35910(Rat)

*AREX continuously optimizes our products. Webpage content may not reflect the latest updates. For inquiries, please contact info@arexbio.com or your local distributor.

*Clone Number, Reactivity, Source/Host and Clonality can be found in the product name and Key Features section above.

DATASHEET**MCT4 Rabbit Polyclonal Antibody**

CAT. NO. APA09523

DATA

Western blot analysis of MCT4 expression in CT26 (A), C6 (B), mouse muscle (C), rat brain (D) whole cell lysates. (Predicted band size: 49 kD; Observed band size: 50 kD)

STORAGE

Store at 4°C short term. For long term storage, store at -20°C, avoiding freeze/thaw cycles.

NOTE

For Research Use Only. Not for diagnostic, therapeutics, prophylactic or in vivo use.