

DATASHEET

SLC4A7 Rabbit Polyclonal Antibody

CAT. NO. APA09525

KEY FEATURES

| | | | |
|---------------|---|---------------|--------------------|
| Target | SLC4A7 | Source / Host | Rabbit |
| Reactivity | Human, Mouse, Rat, Monkey | Clonality | Polyclonal |
| Applications | WB | Conjugation | Unconjugated |
| Form / Buffer | Liquid in 0.42% Potassium phosphate, 0.87% Sodium chloride, pH 7.3, 30% glycerol, and 0.01% sodium azide. | | Storage at-20°C |

BACKGROUND

Electroneutral sodium- and bicarbonate-dependent cotransporter with a Na(+):HCO3(-) 1:1 stoichiometry :HCO3(-) 1:1 stoichiometry . Mediates the sodium-dependent bicarbonate transport important for pH recovery after acid load as well as for regulation of steady-state pH in the duodenum and vascular smooth muscle cells . Plays a key role in macrophage acidification, mediating bicarbonate import into the cytoplasm which is crucial for net acid extrusion and maintenance of cytoplasmic pH during phagocytosis . Provides cellular bicarbonate for de novo purine and pyrimidine synthesis and is a key mediator of de novo nucleotide synthesis downstream of mTORC1 signaling in proliferating cells .

APPLICATION

To ensure optimal assay performance, AREX recommends conducting reagent titration tailored to each testing system for optimal detection results.

| | |
|----|----------------|
| WB | 1:500 - 1:1000 |
|----|----------------|

*Results are sample-specific. Please refer to your local assay conditions and test parameters for reference.

PRODUCT OVERVIEW

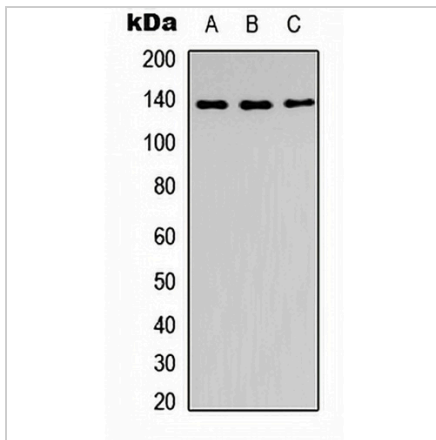
| | |
|-------------------|--|
| Description | Rabbit polyclonal antibody to SLC4A7 |
| Specificity | Recognizes endogenous levels of SLC4A7 protein. |
| Antibody Type | Primary antibody |
| Immunogen | KLH-conjugated synthetic peptide encompassing a sequence within the center region of human SLC4A7. The exact sequence is proprietary. |
| Purification | The antibody was purified by immunogen affinity chromatography. |
| Molecular Weight | Predicted: 136 kD; Observed: 136 kD |
| Form/Buffer | Liquid in 0.42% Potassium phosphate, 0.87% Sodium chloride, pH 7.3, 30% glycerol, and 0.01% sodium azide. |
| Alternative Names | BT; NBC2; NBC2B; NBC3; NBCn1; SBC2; SLC4A6; Sodium bicarbonate cotransporter 3; Electroneutral Na/HCO(3) cotransporter; Sodium bicarbonate cotransporter 2; Sodium bicarbonate cotransporter 2b; Bicarbonate transporter; Solute carrier family 4 member 7 |
| Gene Symbol | SLC4A7 |
| Entrez Gene | 9497(Human); 117955(Rat) |
| SwissProt | Q9Y6M7(Human); Q8BTY2(Mouse); Q9R1N3(Rat) |

*AREX continuously optimizes our products. Webpage content may not reflect the latest updates. For inquiries, please contact info@arexbio.com or your local distributor.

*Clone Number, Reactivity, Source/Host and Clonality can be found in the product name and Key Features section above.

DATASHEET**SLC4A7 Rabbit Polyclonal Antibody**

CAT. NO. APA09525

DATA

Western blot analysis of SLC4A7 expression in A549 (A), Raw264.7 (B), PC12 (C) whole cell lysates. (Predicted band size: 136 kD; Observed band size: 136 kD)

STORAGE

Store at 4°C short term. For long term storage, store at -20°C, avoiding freeze/thaw cycles.

NOTE

For Research Use Only. Not for diagnostic, therapeutics, prophylactic or in vivo use.