

DATASHEET

SPINK6 Rabbit Polyclonal Antibody

CAT. NO. APA09538

KEY FEATURES

Target	SPINK6	Source / Host	Rabbit
Reactivity	Human, Mouse, Rat	Clonality	Polyclonal
Applications	WB, IHC	Conjugation	Unconjugated
Form / Buffer	Liquid in 0.42% Potassium phosphate, 0.87% Sodium chloride, pH 7.3, 30% glycerol, and 0.01% sodium azide.		Storage at-20°C

BACKGROUND

Serine protease inhibitor selective for kallikreins. Efficiently inhibits KLK4, KLK5, KLK6, KLK7, KLK12, KLK13 and KLK14. Doesn't inhibit KLK8.

APPLICATION

To ensure optimal assay performance, AREX recommends conducting reagent titration tailored to each testing system for optimal detection results.

WB	1:500 - 1:1000
IHC	1:50 - 1:100

*Results are sample-specific. Please refer to your local assay conditions and test parameters for reference.

PRODUCT OVERVIEW

Description	Rabbit polyclonal antibody to SPINK6
Specificity	Recognizes endogenous levels of SPINK6 protein.
Antibody Type	Primary antibody
Immunogen	KLH-conjugated synthetic peptide encompassing a sequence within the center region of human SPINK6. The exact sequence is proprietary.
Purification	The antibody was purified by immunogen affinity chromatography.
Molecular Weight	Predicted: 8 kD; Observed: 8 kD
Form/Buffer	Liquid in 0.42% Potassium phosphate, 0.87% Sodium chloride, pH 7.3, 30% glycerol, and 0.01% sodium azide.
Alternative Names	Serine protease inhibitor Kazal-type 6; Kallikrein inhibitor
Gene Symbol	SPINK6
Entrez Gene	404203(Human); 433180(Mouse); 100911369; 408235(Rat)
SwissProt	Q6UWN8(Human); Q8BT20(Mouse); Q6IE47(Rat)

*AREX continuously optimizes our products. Webpage content may not reflect the latest updates. For inquiries, please contact info@arexbio.com or your local distributor.

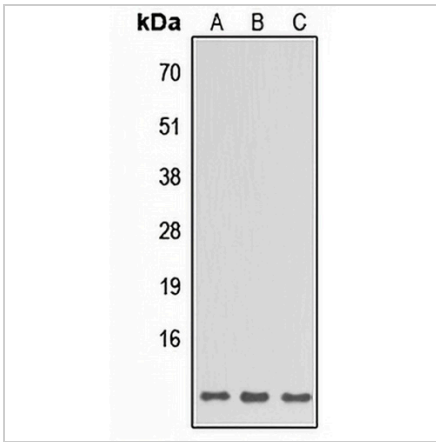
*Clone Number, Reactivity, Source/Host and Clonality can be found in the product name and Key Features section above.

DATASHEET

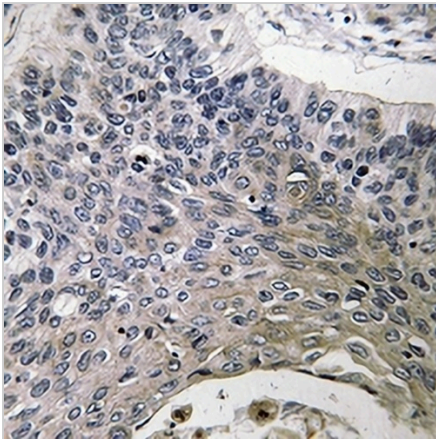
SPINK6 Rabbit Polyclonal Antibody

CAT. NO. APA09538

DATA



Western blot analysis of SPINK6 expression in HeLa (A), Raw264.7 (B), H9C2 (C) whole cell lysates. (Predicted band size: 8 kD; Observed band size: 8 kD)



Immunohistochemical analysis of SPINK6 staining in human lung cancer formalin fixed paraffin embedded tissue section. The section was pre-treated using heat mediated antigen retrieval with sodium citrate buffer (pH 6.0). The section was then incubated with the antibody at room temperature and detected using an HRP conjugated compact polymer system. DAB was used as the chromogen. The section was then counterstained with haematoxylin and mounted with DPX.

STORAGE

Store at 4°C short term. For long term storage, store at -20°C, avoiding freeze/thaw cycles.

NOTE

For Research Use Only. Not for diagnostic, therapeutics, prophylactic or in vivo use.