

DATASHEET

TCF4/12 Rabbit Polyclonal Antibody

CAT. NO. APA09557

KEY FEATURES

Target	TCF4/12	Source / Host	Rabbit
Reactivity	Human, Mouse, Rat, Bovine, Chicken, Pig	Clonality	Polyclonal
Applications	WB, IHC	Conjugation	Unconjugated
Form / Buffer	Liquid in 0.42% Potassium phosphate, 0.87% Sodium chloride, pH 7.3, 30% glycerol, and 0.01% sodium azide.		Storage at -20°C

BACKGROUND

Transcription factor that binds to the immunoglobulin enhancer Mu-E5/KE5-motif. Involved in the initiation of neuronal differentiation. Activates transcription by binding to the E box (5'-CANNTG-3'). Binds to the E-box present in the somatostatin receptor 2 initiator element (SSTR2-INTR) to activate transcription. Preferentially binds to either 5'-ACANNTGT-3' or 5'-CCANNTGG-3'.

APPLICATION

To ensure optimal assay performance, AREX recommends conducting reagent titration tailored to each testing system for optimal detection results.

WB	1:500 - 1:1000
IHC	1:100 - 1:200

*Results are sample-specific. Please refer to your local assay conditions and test parameters for reference.

PRODUCT OVERVIEW

Description	Rabbit polyclonal antibody to TCF4/12
Specificity	Recognizes endogenous levels of TCF4/12 protein.
Antibody Type	Primary antibody
Immunogen	KLH-conjugated synthetic peptide encompassing a sequence within the C-term region of human TCF4/12. The exact sequence is proprietary.
Purification	The antibody was purified by immunogen affinity chromatography.
Molecular Weight	Predicted: 71; Observed: 70 kD
Form/Buffer	Liquid in 0.42% Potassium phosphate, 0.87% Sodium chloride, pH 7.3, 30% glycerol, and 0.01% sodium azide.
Alternative Names	TCF4; BHLHB19; ITF2; SEF2; Transcription factor 4; TCF-4; Class B basic helix-loop-helix protein 19; bHLHb19; Immunoglobulin transcription factor 2; ITF-2; SL3-3 enhancer factor 2; SEF-2; TCF12; BHLHB20; HEB; HTF4; Transcription factor 12; TCF-12; Class B basic helix-loop-helix protein 20; bHLHb20; DNA-binding protein HTF4; E-box-binding protein; Transcription factor HTF-4
Gene Symbol	TCF4; TCF12
Entrez Gene	6925; 6938(Human); 21413; 21406(Mouse); 84382; 25720(Rat)
SwissProt	P15884; Q99081(Human); Q60722; Q61286(Mouse); Q62655; P51514(Rat)

*AREX continuously optimizes our products. Webpage content may not reflect the latest updates. For inquiries, please contact info@arexbio.com or your local distributor.

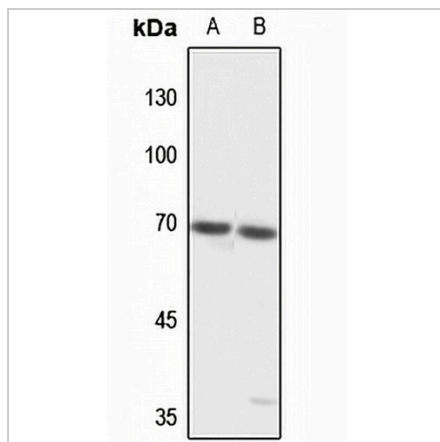
*Clone Number, Reactivity, Source/Host and Clonality can be found in the product name and Key Features section above.

DATASHEET

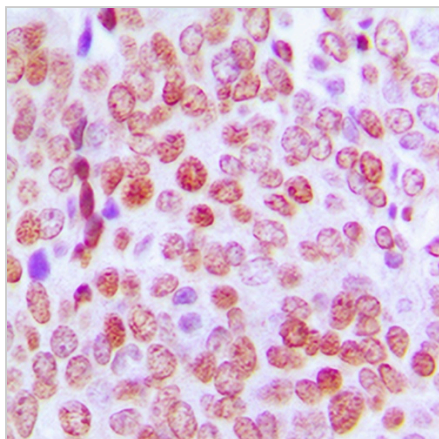
TCF4/12 Rabbit Polyclonal Antibody

CAT. NO. APA09557

DATA



Western blot analysis of TCF4/12 expression in H446 (A), mouse liver (B) whole cell lysates. (Predicted band size: 71; 72 kD; Observed band size: 70 kD)



Immunohistochemical analysis of TCF4/12 staining in human prostate cancer formalin fixed paraffin embedded tissue section. The section was pre-treated using heat mediated antigen retrieval with sodium citrate buffer (pH 6.0). The section was then incubated with the antibody at room temperature and detected using an HRP conjugated compact polymer system. DAB was used as the chromogen. The section was then counterstained with haematoxylin and mounted with DPX.

STORAGE

Store at 4°C short term. For long term storage, store at -20°C, avoiding freeze/thaw cycles.

NOTE

For Research Use Only. Not for diagnostic, therapeutics, prophylactic or in vivo use.