

DATASHEET

UBE3C Rabbit Polyclonal Antibody

CAT. NO. APA09583

KEY FEATURES

Target	UBE3C	Source / Host	Rabbit
Reactivity	Human	Clonality	Polyclonal
Applications	WB	Conjugation	Unconjugated
Form / Buffer	Liquid in 0.42% Potassium phosphate, 0.87% Sodium chloride, pH 7.3, 30% glycerol, and 0.01% sodium azide.		Storage at -20°C

BACKGROUND

E3 ubiquitin-protein ligase that specifically catalyzes 'Lys-29'- and 'Lys-48'-linked polyubiquitin chains . Accepts ubiquitin from the E2 ubiquitin-conjugating enzyme UBE2D1 in the form of a thioester and then directly transfers the ubiquitin to targeted substrates . Associates with the proteasome and promotes elongation of ubiquitin chains on substrates bound to the 26S proteasome . Also catalyzes 'Lys-29'- and 'Lys-48'-linked ubiquitination of 26S proteasome subunit ADRM1/RPN13 in response to proteotoxic stress, impairing the ability of the proteasome to bind and degrade ubiquitin-conjugated proteins . Acts as a negative regulator of autophagy by mediating 'Lys-29'- and 'Lys-48'-linked ubiquitination of PIK3C3/VPS34, promoting its degradation .

APPLICATION

To ensure optimal assay performance, AREX recommends conducting reagent titration tailored to each testing system for optimal detection results.

WB	1:500 - 1:1000
----	----------------

*Results are sample-specific. Please refer to your local assay conditions and test parameters for reference.

PRODUCT OVERVIEW

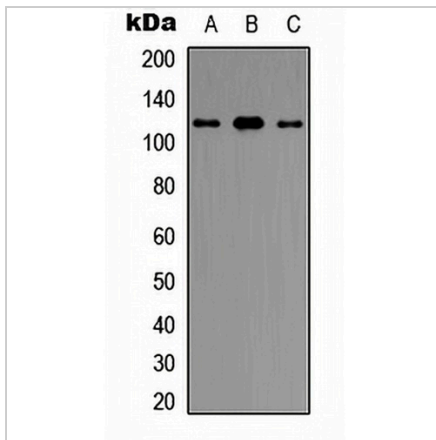
Description	Rabbit polyclonal antibody to UBE3C
Specificity	Recognizes endogenous levels of UBE3C protein.
Antibody Type	Primary antibody
Immunogen	KLH-conjugated synthetic peptide encompassing a sequence within the center region of human UBE3C. The exact sequence is proprietary.
Purification	The antibody was purified by immunogen affinity chromatography.
Molecular Weight	Predicted: 123 kD; Observed: 124 kD
Form/Buffer	Liquid in 0.42% Potassium phosphate, 0.87% Sodium chloride, pH 7.3, 30% glycerol, and 0.01% sodium azide.
Alternative Names	KIAA0010; KIAA10; Ubiquitin-protein ligase E3C; HectH2
Gene Symbol	UBE3C
Entrez Gene	9690(Human)
SwissProt	Q15386(Human)

*AREX continuously optimizes our products. Webpage content may not reflect the latest updates. For inquiries, please contact info@arexbio.com or your local distributor.

*Clone Number, Reactivity, Source/Host and Clonality can be found in the product name and Key Features section above.

DATASHEET**UBE3C Rabbit Polyclonal Antibody**

CAT. NO. APA09583

DATA

Western blot analysis of UBE3C expression in HeLa (A), HepG2 (B), THP1 (C) whole cell lysates. (Predicted band size: 123 kD; Observed band size: 124 kD)

STORAGE

Store at 4°C short term. For long term storage, store at -20°C, avoiding freeze/thaw cycles.

NOTE

For Research Use Only. Not for diagnostic, therapeutics, prophylactic or in vivo use.