

DATASHEET
ZIC1/2/3 Rabbit Polyclonal Antibody
CAT. NO. APA09596
KEY FEATURES

Target	ZIC1/2/3	Source / Host	Rabbit
Reactivity	Human, Mouse, Rat, Chicken	Clonality	Polyclonal
Applications	WB, IHC, IF/ICC	Conjugation	Unconjugated
Form / Buffer	Liquid in 0.42% Potassium phosphate, 0.87% Sodium chloride, pH 7.3, 30% glycerol, and 0.01% sodium azide.		Storage at -20°C

BACKGROUND

Acts as a transcriptional activator. Involved in neurogenesis. Plays important roles in the early stage of organogenesis of the CNS, as well as during dorsal spinal cord development and maturation of the cerebellum. Involved in the spatial distribution of mossy fiber (MF) neurons within the pontine gray nucleus (PGN). Plays a role in the regulation of MF axon pathway choice. Promotes MF migration towards ipsilaterally-located cerebellar territories. May have a role in shear flow mechanotransduction in osteocytes. Retains nuclear GLI1 and GLI3 in the cytoplasm. Binds to the minimal GLI-consensus sequence 5'-TGGGTGGTC-3'.

APPLICATION

To ensure optimal assay performance, AREX recommends conducting reagent titration tailored to each testing system for optimal detection results.

WB	1:500 - 1:1000
IHC	1:100 - 1:200
IF/ICC	1:100 - 1:500

*Results are sample-specific. Please refer to your local assay conditions and test parameters for reference.

PRODUCT OVERVIEW

Description	Rabbit polyclonal antibody to ZIC1/2/3
Specificity	Recognizes endogenous levels of ZIC1/2/3 protein.
Antibody Type	Primary antibody
Immunogen	KLH-conjugated synthetic peptide encompassing a sequence within the center region of human ZIC1/2/3. The exact sequence is proprietary.
Purification	The antibody was purified by immunogen affinity chromatography.
Molecular Weight	Predicted: 48; Observed: 50 kD
Form/Buffer	Liquid in 0.42% Potassium phosphate, 0.87% Sodium chloride, pH 7.3, 30% glycerol, and 0.01% sodium azide.
Alternative Names	ZIC1; ZIC; ZNF201; Zinc finger protein ZIC 1; Zinc finger protein 201; Zinc finger protein of the cerebellum 1; ZIC2; Zinc finger protein ZIC 2; Zinc finger protein of the cerebellum 2; ZIC3; ZNF203; Zinc finger protein ZIC 3; Zinc finger protein 203; Zinc finger protein of the cerebellum 3
Gene Symbol	ZIC1; ZIC2; ZIC3
Entrez Gene	7545; 7546; 7547(Human); 22771; 22773(Mouse)
SwissProt	Q15915; O95409; O60481(Human); P46684; Q62520; Q62521(Mouse)

*AREX continuously optimizes our products. Webpage content may not reflect the latest updates. For inquiries, please contact info@arexbio.com or your local distributor.

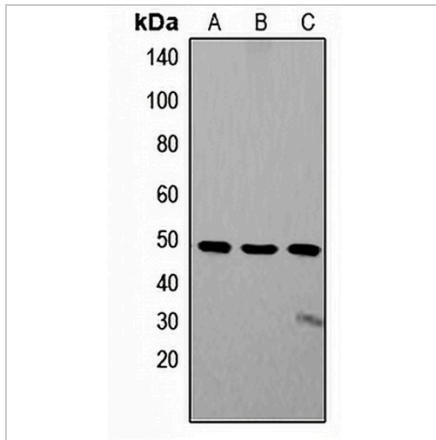
*Clone Number, Reactivity, Source/Host and Clonality can be found in the product name and Key Features section above.

DATASHEET

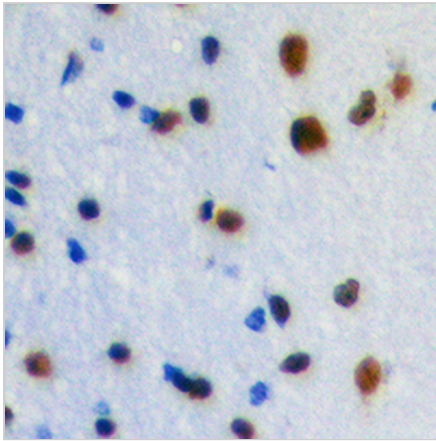
ZIC1/2/3 Rabbit Polyclonal Antibody

CAT. NO. APA09596

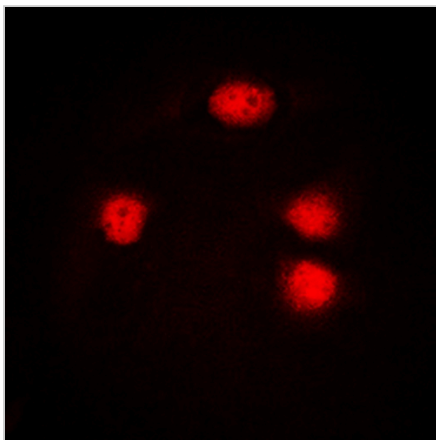
DATA



Western blot analysis of ZIC1/2/3 expression in SW480 (A), Jurkat (B), SHSY5Y (C) whole cell lysates. (Predicted band size: 48; 55; 50 kD; Observed band size: 50 kD)



Immunohistochemical analysis of ZIC1/2/3 staining in human brain formalin fixed paraffin embedded tissue section. The section was pre-treated using heat mediated antigen retrieval with sodium citrate buffer (pH 6.0). The section was then incubated with the antibody at room temperature and detected using an HRP conjugated compact polymer system. DAB was used as the chromogen. The section was then counterstained with haematoxylin and mounted with DPX.



Immunofluorescent analysis of ZIC1/2/3 staining in Jurkat cells. Formalin-fixed cells were permeabilized with 0.1% Triton X-100 in TBS for 5-10 minutes and blocked with 3% BSA-PBS for 30 minutes at room temperature. Cells were probed with the primary antibody in 3% BSA-PBS and incubated overnight at 4 °C in a humidified chamber. Cells were washed with PBST and incubated with a DyLight 594-conjugated secondary antibody (red) in PBS at room temperature in the dark.

STORAGE

Store at 4°C short term. For long term storage, store at -20°C, avoiding freeze/thaw cycles.

NOTE

For Research Use Only. Not for diagnostic, therapeutics, prophylactic or in vivo use.