

DATASHEET

MARCH5 Rabbit Polyclonal Antibody

CAT. NO. APA09603

KEY FEATURES

Target	MARCH5	Source / Host	Rabbit
Reactivity	Human, Mouse	Clonality	Polyclonal
Applications	WB, IF/ICC	Conjugation	Unconjugated
Form / Buffer	Liquid in 0.42% Potassium phosphate, 0.87% Sodium chloride, pH 7.3, 30% glycerol, and 0.01% sodium azide.		Storage at -20°C

BACKGROUND

Mitochondrial E3 ubiquitin-protein ligase that plays a crucial role in the control of mitochondrial morphology by acting as a positive regulator of mitochondrial fission and as an important regulator of immune response . Plays a crucial role in maintaining mitochondrial homeostasis by regulating the dynamics of mitochondria through the ubiquitination of key proteins involved in fission and fusion such as FIS1, DNM1L and MFN1 . Acts as a critical determinant of mitotic apoptosis through both MCL1-dependent and -independent pathways . Turns off persistent immune signaling by degrading oligomeric complexes of retinoic acid-inducible gene I/DDX58 and mitochondrial antiviral-signaling protein/MAVS formed upon RNA virus infection .

APPLICATION

To ensure optimal assay performance, AREX recommends conducting reagent titration tailored to each testing system for optimal detection results.

WB	1:500 - 1:1000
IF/ICC	1:100 - 1:500

*Results are sample-specific. Please refer to your local assay conditions and test parameters for reference.

PRODUCT OVERVIEW

Description	Rabbit polyclonal antibody to MARCH5
Specificity	Recognizes endogenous levels of MARCH5 protein.
Antibody Type	Primary antibody
Immunogen	KLH-conjugated synthetic peptide encompassing a sequence within the center region of human MARCH5. The exact sequence is proprietary.
Purification	The antibody was purified by immunogen affinity chromatography.
Molecular Weight	Predicted: 31 kD; Observed: 31 kD
Form/Buffer	Liquid in 0.42% Potassium phosphate, 0.87% Sodium chloride, pH 7.3, 30% glycerol, and 0.01% sodium azide.
Alternative Names	RNF153; E3 ubiquitin-protein ligase MARCH5; Membrane-associated RING finger protein 5; Membrane-associated RING-CH protein V; MARCH-V; Mitochondrial ubiquitin ligase; MITOL; RING finger protein 153
Gene Symbol	MARCH5
Entrez Gene	54708(Human); 69104(Mouse)
SwissProt	Q9NX47(Human); Q3KNM2(Mouse)

*AREX continuously optimizes our products. Webpage content may not reflect the latest updates. For inquiries, please contact info@arexbio.com or your local distributor.

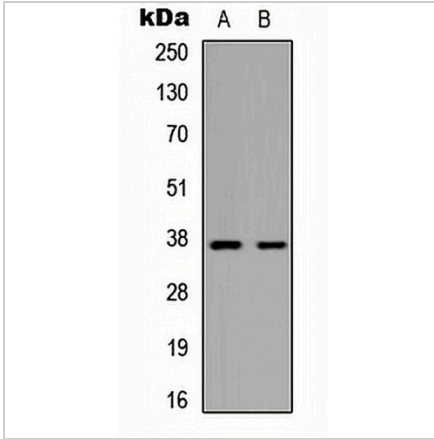
*Clone Number, Reactivity, Source/Host and Clonality can be found in the product name and Key Features section above.

DATASHEET

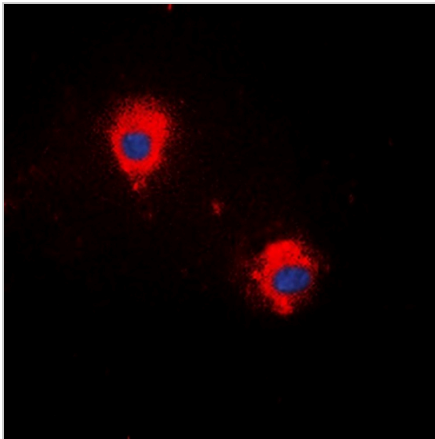
MARCH5 Rabbit Polyclonal Antibody

CAT. NO. APA09603

DATA



Western blot analysis of MARCH5 expression in HepG2 (A), mouse brain (B) whole cell lysates. (Predicted band size: 31 kD; Observed band size: 31 kD)



Immunofluorescent analysis of MARCH5 staining in HepG2 cells. Formalin-fixed cells were permeabilized with 0.1% Triton X-100 in TBS for 5-10 minutes and blocked with 3% BSA-PBS for 30 minutes at room temperature. Cells were probed with the primary antibody in 3% BSA-PBS and incubated overnight at 4 °C in a humidified chamber. Cells were washed with PBST and incubated with a DyLight 594-conjugated secondary antibody (red) in PBS at room temperature in the dark. DAPI was used to stain the cell nuclei (blue).

STORAGE

Store at 4°C short term. For long term storage, store at -20°C, avoiding freeze/thaw cycles.

NOTE

For Research Use Only. Not for diagnostic, therapeutics, prophylactic or in vivo use.