

DATASHEET

Alpha-adducin (Phospho-T445) Rabbit Polyclonal Antibody

CAT. NO. APA09605

KEY FEATURES

Target	Alpha-adducin (Phospho-T445)	Source / Host	Rabbit
Reactivity	Human, Mouse, Rat, Pig	Clonality	Polyclonal
Applications	WB, IHC	Conjugation	Unconjugated
Form / Buffer	Liquid in 0.42% Potassium phosphate, 0.87% Sodium chloride, pH 7.3, 30% glycerol, and 0.01% sodium azide.	Storage	at-20°C

BACKGROUND

Membrane-cytoskeleton-associated protein that promotes the assembly of the spectrin-actin network. Binds to calmodulin.

APPLICATION

To ensure optimal assay performance, AREX recommends conducting reagent titration tailored to each testing system for optimal detection results.

WB	1:500 - 1:1000
IHC	1:100 - 1:200

*Results are sample-specific. Please refer to your local assay conditions and test parameters for reference.

PRODUCT OVERVIEW

Description	Rabbit polyclonal antibody to Alpha-adducin (Phospho-T445)
Specificity	Recognizes endogenous levels of Alpha-adducin protein only when phosphorylated at T445.
Antibody Type	Primary antibody
Immunogen	KLH-conjugated synthetic phosphopeptide corresponding to residues surrounding T445 of human Alpha-adducin protein. The exact sequence is proprietary.
Purification	The antibody was purified by immunogen affinity chromatography.
Molecular Weight	Predicted: 80 kD; Observed: 130 kD
Form/Buffer	Liquid in 0.42% Potassium phosphate, 0.87% Sodium chloride, pH 7.3, 30% glycerol, and 0.01% sodium azide.
Alternative Names	ADDA; Alpha-adducin; Erythrocyte adducin subunit alpha
Gene Symbol	ADD1
Entrez Gene	118(Human); 11518(Mouse); 24170(Rat)
SwissProt	P35611(Human); Q9QYC0(Mouse); Q63028(Rat)

*AREX continuously optimizes our products. Webpage content may not reflect the latest updates. For inquiries, please contact info@arexbio.com or your local distributor.

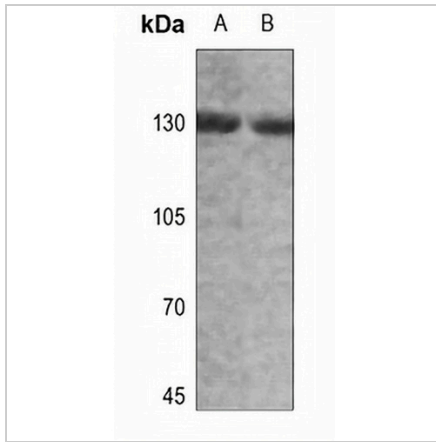
*Clone Number, Reactivity, Source/Host and Clonality can be found in the product name and Key Features section above.

DATASHEET

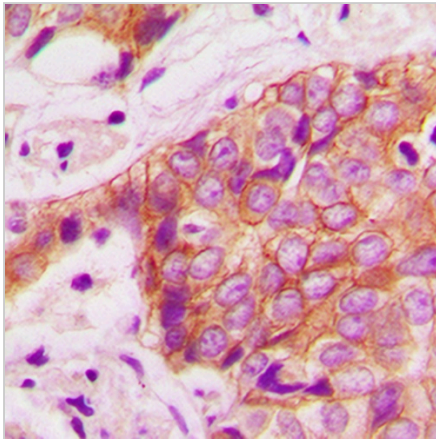
Alpha-adducin (Phospho-T445) Rabbit Polyclonal Antibody

CAT. NO. APA09605

DATA



Western blot analysis of Alpha-adducin (Phospho-T445) expression in mouse liver (A), rat liver (B) whole cell lysates. (Predicted band size: 80 kD; Observed band size: 130 kD)



Immunohistochemical analysis of Alpha-adducin (Phospho-T445) staining in human breast cancer formalin fixed paraffin embedded tissue section. The section was pre-treated using heat mediated antigen retrieval with sodium citrate buffer (pH 6.0). The section was then incubated with the antibody at room temperature and detected using an HRP conjugated compact polymer system. DAB was used as the chromogen. The section was then counterstained with haematoxylin and mounted with DPX.

STORAGE

Store at 4°C short term. For long term storage, store at -20°C, avoiding freeze/thaw cycles.

NOTE

For Research Use Only. Not for diagnostic, therapeutics, prophylactic or in vivo use.