

DATASHEET

CDC25B (Phospho-S323) Rabbit Polyclonal Antibody

CAT. NO. APA09638

KEY FEATURES

Target	CDC25B (Phospho-S323)	Source / Host	Rabbit
Reactivity	Human, Mouse, Rat, Monkey	Clonality	Polyclonal
Applications	WB	Conjugation	Unconjugated
Form / Buffer	Liquid in 0.42% Potassium phosphate, 0.87% Sodium chloride, pH 7.3, 30% glycerol, and 0.01% sodium azide.		Storage at -20°C

BACKGROUND

Tyrosine protein phosphatase which functions as a dosage-dependent inducer of mitotic progression . Directly dephosphorylates CDK1 and stimulates its kinase activity . Required for G2/M phases of the cell cycle progression and abscission during cytokinesis in a ECT2-dependent manner . The three isoforms seem to have a different level of activity .

APPLICATION

To ensure optimal assay performance, AREX recommends conducting reagent titration tailored to each testing system for optimal detection results.

WB	1:500 - 1:1000
----	----------------

*Results are sample-specific. Please refer to your local assay conditions and test parameters for reference.

PRODUCT OVERVIEW

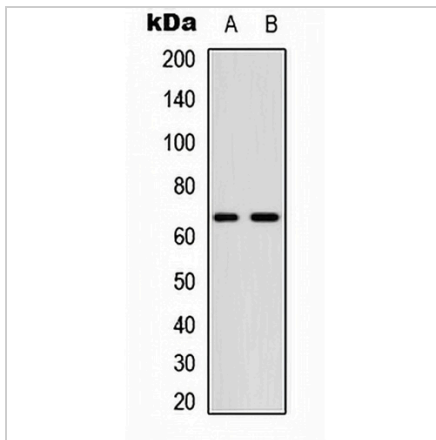
Description	Rabbit polyclonal antibody to CDC25B (Phospho-S323)
Specificity	Recognizes endogenous levels of CDC25B protein only when phosphorylated at S323.
Antibody Type	Primary antibody
Immunogen	KLH-conjugated synthetic phosphopeptide corresponding to residues surrounding S323 of human CDC25B protein. The exact sequence is proprietary.
Purification	The antibody was purified by immunogen affinity chromatography.
Molecular Weight	Predicted: 64 kD; Observed: 65 kD
Form/Buffer	Liquid in 0.42% Potassium phosphate, 0.87% Sodium chloride, pH 7.3, 30% glycerol, and 0.01% sodium azide.
Alternative Names	CDC25HU2; M-phase inducer phosphatase 2; Dual specificity phosphatase Cdc25B
Gene Symbol	CDC25B
Entrez Gene	994(Human); 12531(Mouse); 171103(Rat)
SwissProt	P30305(Human); P30306(Mouse); P48966(Rat)

*AREX continuously optimizes our products. Webpage content may not reflect the latest updates. For inquiries, please contact info@arexbio.com or your local distributor.

*Clone Number, Reactivity, Source/Host and Clonality can be found in the product name and Key Features section above.

DATASHEET**CDC25B (Phospho-S323) Rabbit Polyclonal Antibody**

CAT. NO. APA09638

DATA

Western blot analysis of CDC25B (Phospho-S323) expression in A549 (A), NIH3T3 (B) whole cell lysates. (Predicted band size: 64 kD; Observed band size: 65 kD)

STORAGE

Store at 4°C short term. For long term storage, store at -20°C, avoiding freeze/thaw cycles.

NOTE

For Research Use Only. Not for diagnostic, therapeutics, prophylactic or in vivo use.