

DATASHEET

Claudin 8 Rabbit Polyclonal Antibody

CAT. NO. APA09647

KEY FEATURES

Target	Claudin 8	Source / Host	Rabbit
Reactivity	Human, Monkey	Clonality	Polyclonal
Applications	WB	Conjugation	Unconjugated
Form / Buffer	Liquid in 0.42% Potassium phosphate, 0.87% Sodium chloride, pH 7.3, 30% glycerol, and 0.01% sodium azide.		Storage at-20°C

BACKGROUND

Can associate with other claudins to regulate tight junction structural and functional strand dynamics . May coassemble with CLDN4 into tight junction strands containing anion-selective channels that convey paracellular chloride permeability in renal collecting ducts . Cannot form tight junction strands on its own .

APPLICATION

To ensure optimal assay performance, AREX recommends conducting reagent titration tailored to each testing system for optimal detection results.

WB	1:500 - 1:1000
----	----------------

*Results are sample-specific. Please refer to your local assay conditions and test parameters for reference.

PRODUCT OVERVIEW

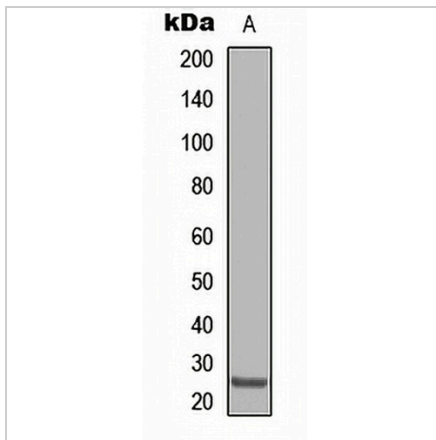
Description	Rabbit polyclonal antibody to Claudin 8
Specificity	Recognizes endogenous levels of Claudin 8 protein.
Antibody Type	Primary antibody
Immunogen	KLH-conjugated synthetic peptide encompassing a sequence within the center region of human Claudin 8. The exact sequence is proprietary.
Purification	The antibody was purified by immunogen affinity chromatography.
Molecular Weight	Predicted: 24 kD; Observed: 25 kD
Form/Buffer	Liquid in 0.42% Potassium phosphate, 0.87% Sodium chloride, pH 7.3, 30% glycerol, and 0.01% sodium azide.
Alternative Names	Claudin-8
Gene Symbol	CLDN8
Entrez Gene	9073(Human); 54420(Mouse)
SwissProt	P56748(Human); Q9Z260(Mouse)

*AREX continuously optimizes our products. Webpage content may not reflect the latest updates. For inquiries, please contact info@arexbio.com or your local distributor.

*Clone Number, Reactivity, Source/Host and Clonality can be found in the product name and Key Features section above.

DATASHEET**Claudin 8 Rabbit Polyclonal Antibody**

CAT. NO. APA09647

DATA

Western blot analysis of Claudin 8 expression in HepG2 (A) whole cell lysates. (Predicted band size: 24 kD; Observed band size: 25 kD)

STORAGE

Store at 4°C short term. For long term storage, store at -20°C, avoiding freeze/thaw cycles.

NOTE

For Research Use Only. Not for diagnostic, therapeutics, prophylactic or in vivo use.