

DATASHEET

CLN5 Rabbit Polyclonal Antibody

CAT. NO. APA09648

KEY FEATURES

Target	CLN5	Source / Host	Rabbit
Reactivity	Human, Mouse, Rat, Bovine, Sheep	Clonality	Polyclonal
Applications	WB	Conjugation	Unconjugated
Form / Buffer	Liquid in 0.42% Potassium phosphate, 0.87% Sodium chloride, pH 7.3, 30% glycerol, and 0.01% sodium azide.		Storage at -20°C

BACKGROUND

Catalyzes the synthesis of bis(monoacylglycero)phosphate (BMP) via transacylation of 2 molecules of lysophosphatidylglycerol (LPG) phosphate (BMP) via transacylation of 2 molecules of lysophosphatidylglycerol (LPG) . BMP also known as lysobisphosphatidic acid plays a key role in the formation of intraluminal vesicles and in maintaining intracellular cholesterol homeostasis . Can use only LPG as the exclusive lysophospholipid acyl donor for base exchange and displays BMP synthase activity towards various LPGs (LPG 14:0, LPG 16:0, LPG 18:0, LPG 18:1) with a higher preference for longer chain lengths .

APPLICATION

To ensure optimal assay performance, AREX recommends conducting reagent titration tailored to each testing system for optimal detection results.

WB	1:500 - 1:1000
----	----------------

*Results are sample-specific. Please refer to your local assay conditions and test parameters for reference.

PRODUCT OVERVIEW

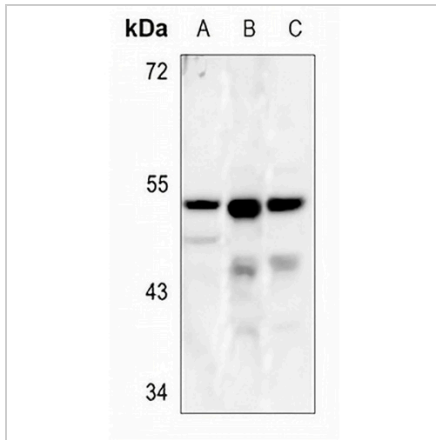
Description	Rabbit polyclonal antibody to CLN5
Specificity	Recognizes endogenous levels of CLN5 protein.
Antibody Type	Primary antibody
Immunogen	KLH-conjugated synthetic peptide encompassing a sequence within the center region of human CLN5. The exact sequence is proprietary.
Purification	The antibody was purified by immunogen affinity chromatography.
Molecular Weight	Predicted: 41 kD; Observed: 50 kD
Form/Buffer	Liquid in 0.42% Potassium phosphate, 0.87% Sodium chloride, pH 7.3, 30% glycerol, and 0.01% sodium azide.
Alternative Names	Ceroid-lipofuscinosis neuronal protein 5; Protein CLN5
Gene Symbol	CLN5
Entrez Gene	1203(Human); 211286(Mouse)
SwissProt	O75503(Human); Q3UMW8(Mouse)

*AREX continuously optimizes our products. Webpage content may not reflect the latest updates. For inquiries, please contact info@arexbio.com or your local distributor.

*Clone Number, Reactivity, Source/Host and Clonality can be found in the product name and Key Features section above.

DATASHEET**CLN5 Rabbit Polyclonal Antibody**

CAT. NO. APA09648

DATA

Western blot analysis of CLN5 expression in A375 (A), mouse brain (B), rat brain (C) whole cell lysates. (Predicted band size: 41 kD; Observed band size: 50 kD)

STORAGE

Store at 4°C short term. For long term storage, store at -20°C, avoiding freeze/thaw cycles.

NOTE

For Research Use Only. Not for diagnostic, therapeutics, prophylactic or in vivo use.